

The Honeywell range of camera housings provide compact, weatherproof enclosures for internal and external applications. Made from extruded aluminium with a polycarbonate, scratch resistant window, the housings are durable and lightweight.

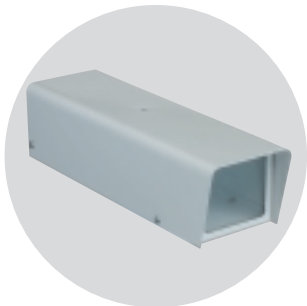
The housings innovative opening system allows hands free camera/lens installation and maintenance. The body and sunshield slide forward and remain suspended from the main unit allowing access to the camera and lens. A wide range of accessories are available for all housings, standard or cable managed mounting options, power supplies, heaters and blowers, making installation and selection far simpler. The housings are compatible with all Honeywell camera and lens combinations.

Contents:

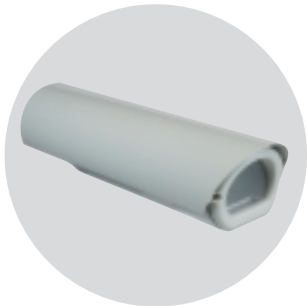
- Honeywell housing systems
- Internal with bracket
- Small and medium external housings
- Internal and external brackets and accessories



External housing



Internal housing



External housing



Bracket



External housing

New Product Code	Old Product Code	New Honeywell Trade Price
------------------	------------------	---------------------------

HONEYWELL HOUSINGS

All dimensions are internal.

LxWxHmm

EXTERNAL HOUSINGS

Aluminium, integral scratch resistant polycarbonate window, sunshield, engineer friendly opening, IP66 rated.

AVH530SH5	Housing, 110-240VAC	300x90x60	67.00
AVH530SH4	Housing, 12-24V	300x90x60	67.00

ACCESSORIES FOR EXTERNAL HOUSINGS

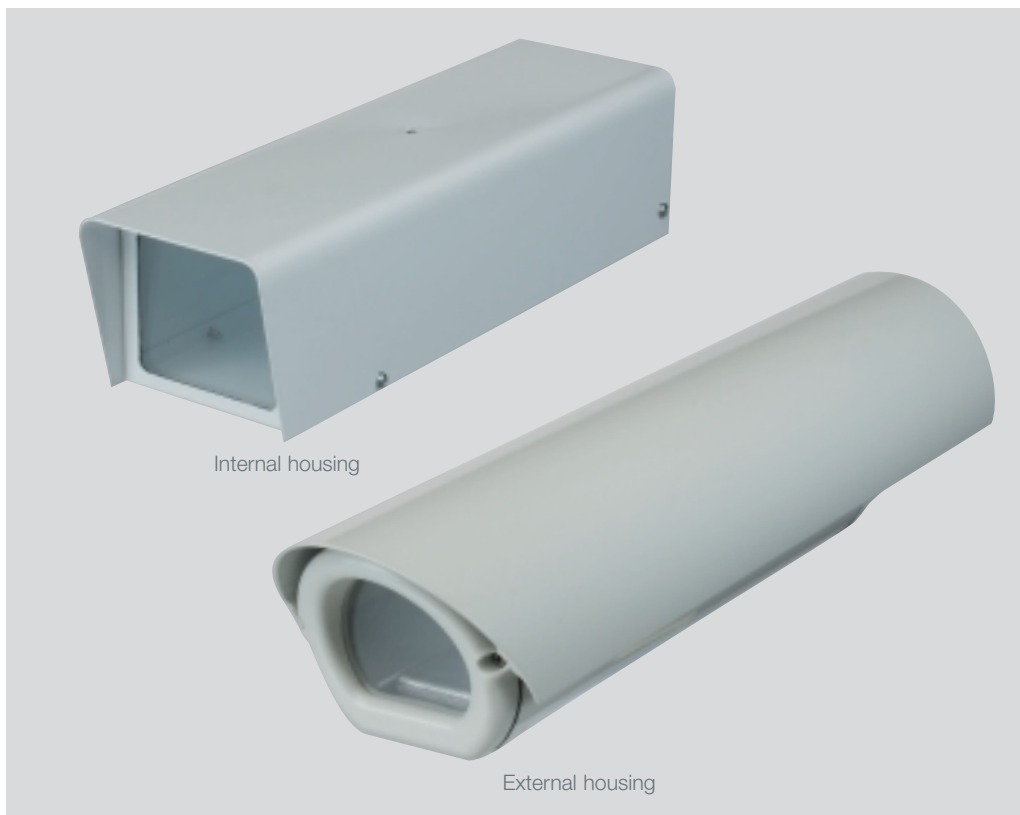
AVH500CMB	Wall bracket – cable management for AVH530 series		18.00
AVH500WMB	Wall bracket – standard for AVH530 series		13.00
AVH500H5	Replacement heater, 110-230VAC, 40W		14.50
AVH500H4	Replacement heater, 12-24VAC, 20W		14.50
AVH500B2	Retrofit blower assembly, 24VAC		46.00
AVH500B3	Retrofit blower assembly, 240VAC		60.00
AVH500PS5-12	Retrofit PSU for housing, 100V~240VAC switching, 12VDC @ 1A output		20.00
AVH500PS2-24	Retrofit PSU for housing, 230VAC input, 24VAC @ 400mA output		18.00

INTERNAL HOUSINGS

IH1	Indoor housing	300x90x80	15.00
-----	----------------	-----------	-------

ACCESSORIES FOR INTERNAL HOUSINGS

IHB1	Bracket for IH1		11.00
------	-----------------	--	-------



Internal housing

External housing

Notes:
