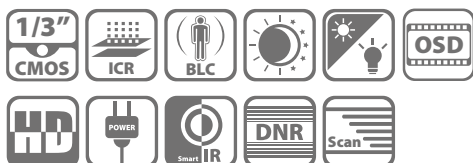


DS-2CE56D5T-(A)VFIR

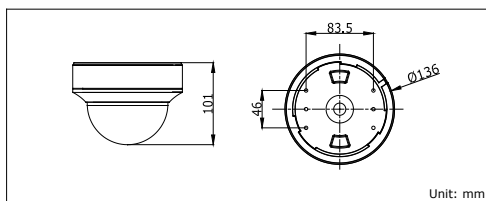
HD1080P Turbo HD Indoor Vari-focal IR Camera



Key features

- HD1080P Video Output
- Adopt HDTVl Technology
- True Day/Night
- 2.8 - 12mm vari-focal lens
- OSD menu, 3D DNR, Smart IR
- Up to 30m IR distance
- Up the Coax(via coaxial cable)
- 120 dB Wide Dynamic Range

Dimensions



Accessories



Video balun
DS-1H18

Available models

DS-2CE56D5T-VFIR
DS-2CE56D5T-AVFIR

DS-2CE56D5T-(A)VFIR	
Camera	
Image Sensor	1 / 3" Progressive Scan CMOS
Signal System	PAL / NTSC
Effective Pixels	1920(H)*1080(V)
Min. Illumination	0.01 Lux @ (F1.2,AGC ON),0 Lux with IR 0.014 Lux @ (F1.4,AGC ON),0 Lux with IR
Shutter speed	1/25(1/30) s to 1/50,000 s
Lens	2.8-12mm @ F1.4 Angle of view: 92° - 32°
Lens Mount	φ14
Angle Adjustment	Pan: 0 - 355°, Tilt: 0 - 180°, Rotation: 0 - 355°
Day & Night	ICR
Wide dynamic range	120 dB
Synchronization	Internal synchronization
Video Frame Rate	1080p@25fps/1080p@30fps
HD Video Output	1 Analog HD output
CVBS Output	1Vp-p Composite Output(75Ω / BNC)
S / N Ratio	More than 52dB
Menu	
Scene	Indoor, Outdoor, Indoor1, LOW-LIGHT
Camera ID	On/off (15 characters, position programmable)
AGC	Support
D/N Mode	Color/BW/EXT
White Balance	ATW, AWC-SET, Indoor, Outdoor, Manual
Privacy Mask	On/Off, maximum 8 zones
Motion Detection	On/Off, maximum 4 zones
BLC	Support
Anti-flicker	On/off
Language	English, Japanese, CHN1, CHN2, Korean, German, French, Italian, Spanish, Polish, Russian, Portuguese, Dutch, Turkish, Hebrew and Arabic
Function	Eclipse, Digital noise reduction, Digital zoom(62x), Slow shutter, Mirror, Defog, Defect pixel correction, SMART D-ZOOM
General	
Working Temperature / Humidity	-30 °C - 60 °C (-22 °F - 140 °F) Humidity 90% or less (non-condensing)
Power Supply	12 VDC ; -A: 12 VDC, 24 VAC
Power Consumption	12 VDC: Max. 4W ; 24 VAC: Max. 5W
IR Range	Up to 30m
Communication	Up the coax(need UTC controller) Protocol: Pelco-C(Coaxitron)
Dimensions	φ136 × 101 mm (φ5.35" × 3.98")
Weight	380 g (0.84 lb)