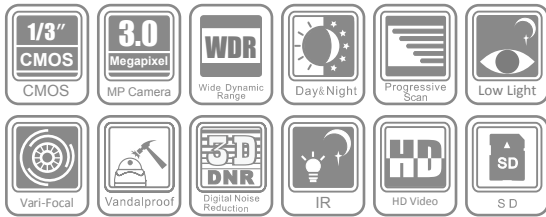


## DS-2CD754FWD-E(I)(Z)

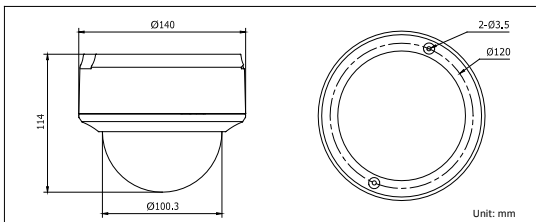
## 3.0MP WDR Indoor Dome Camera



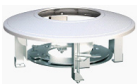
### Key features

- 3.0 mega-pixel (2048 x 1536) high resolution
- 120dB wide dynamic range
- Full HD1080p real-time video
- 3D digital noise reduction
- Super low light
- Motorized VF lens (-Z)
- IR LEDs optional (-I: up to 20m)
- Vandal-proof housing

### Dimensions



### Accessories



DS-1227ZJ  
(Indoor in-ceiling mount)



DS-1229ZJ  
(Vandal-proof wall mount)

### Specifications

DS-2CD754FWD-E(I)(Z)	
<b>Camera</b>	
Image sensor	1/3" progressive scan CMOS
Min. illumination	0.1 lux @F1.2, AGC ON 0.17 lux @F1.6, AGC ON 0 lux with IR
Shutter time	1/25s ~ 1/100,000s
Lens	2.7 ~ 9mm @F1.6, angle of view: 105° ~ 32.1° -Z: motorized VF lens
Lens mount	Φ14
Auto iris	DC drive
Angle adjustment	Pan: 0° ~ 360°, Tilt: 0° ~ 75°, Rotation: 0° ~ 360°
Day & night	Electronic (-I: IR cut filter with auto switch)
Wide dynamic range	120 dB
<b>Compression standard</b>	
Video compression	H.264 / MPEG4 / MJPEG
Bit rate	32 Kbps ~ 16 Mbps
Audio compression	G.711 / G.726
Dual stream	Yes
<b>Image</b>	
Max. image resolution	2048 x 1536
Frame rate	50Hz: 12.5fps (2048 x 1536), 25fps (1920 x 1080), 25fps (1600 x 1200) 60Hz: 15fps (2048 x 1536), 30fps (1920 x 1080), 30fps (1600 x 1200)
Image settings	Saturation, Brightness, Contrast adjustable through client software or web browser
<b>Network</b>	
Network storage	NAS (iSCSI optional)
Alarm trigger	Motion detection, tampering alarm, network disconnect, IP address conflict, storage exception
Protocols	TCP/IP, HTTP, DHCP, DNS, DDNS, RTP, RTSP, PPPoE, SMTP, NTP, SNMP, HTTPS, FTP, 802.1x, Qos (SIP, SRTP, IPv6 optional)
Security	User authentication, watermark
System compatibility	ONVIF, PSIA, CGI
<b>Interface</b>	
Audio input	1-ch 3.5 mm audio interface, MIC IN/LINE IN
Audio output	1-ch 3.5 mm audio interface (line level, 600 Ω)
Communication interface	1 RJ45 10M / 100M ethernet interface, 1 RS-485 interface
Alarm input	2
Alarm output	2
Video output	1 Vp-p composite output (75Ω / RCA)
On-board storage	Built-in SD/SDHC slot, up to 32 GB
Reset button	Yes
<b>General</b>	
Operating conditions	-10°C ~ 60°C (14°F ~ 140°F) Humidity 90% or less (non-condensing)
Power supply	12 VDC ± 10%, PoE (802.3af)
Power consumption	5.5 W ~ 10.5 W (IR LEDs: +2W, motorized VF lens: +3W)
Impact Protection	IEC60068-275Eh, 50J; EN50102, up to IK10
IR Range	-I: approx 10 ~ 20 meters
Dimensions	Φ140 × 114 mm (Φ5.51" × 4.49")
Weight	1400 g (3.09 lbs)

### Available models

DS-2CD754FWD-E, DS-2CD754FWD-EI, DS-2CD754FWD-EZ, DS-2CD754FWD-EIZ

\* -I: IR LEDs, up to 20m

\* -Z: motorized VF lens