



# ActivClient®

**AT-A-GLANCE:  
ACTIVCLIENT BENEFITS:**

- Increases security with proven technology that is widely adopted because of its user-friendly, familiar ATM-like authentication experience
- Optimizes productivity with a single, versatile strong authentication tool for both Windows Login and Remote Access (e.g., PIN-protected PKI certificates or OTPs for VPN)
- Improves compliance with government and industry regulations
- Reduces costs with easy integration into an existing enterprise infrastructure
- Enforces corporate policies and security best practices for workstations and network access
- Scales to tens of thousands of desktops using Windows management tools
- Provides flexibility, with an option of a standalone mode and an initialization tool

## ADVANCED SECURITY CLIENT PROTECTS WORKSTATIONS AND NETWORKS WITH SMART CARDS AND USB TOKENS

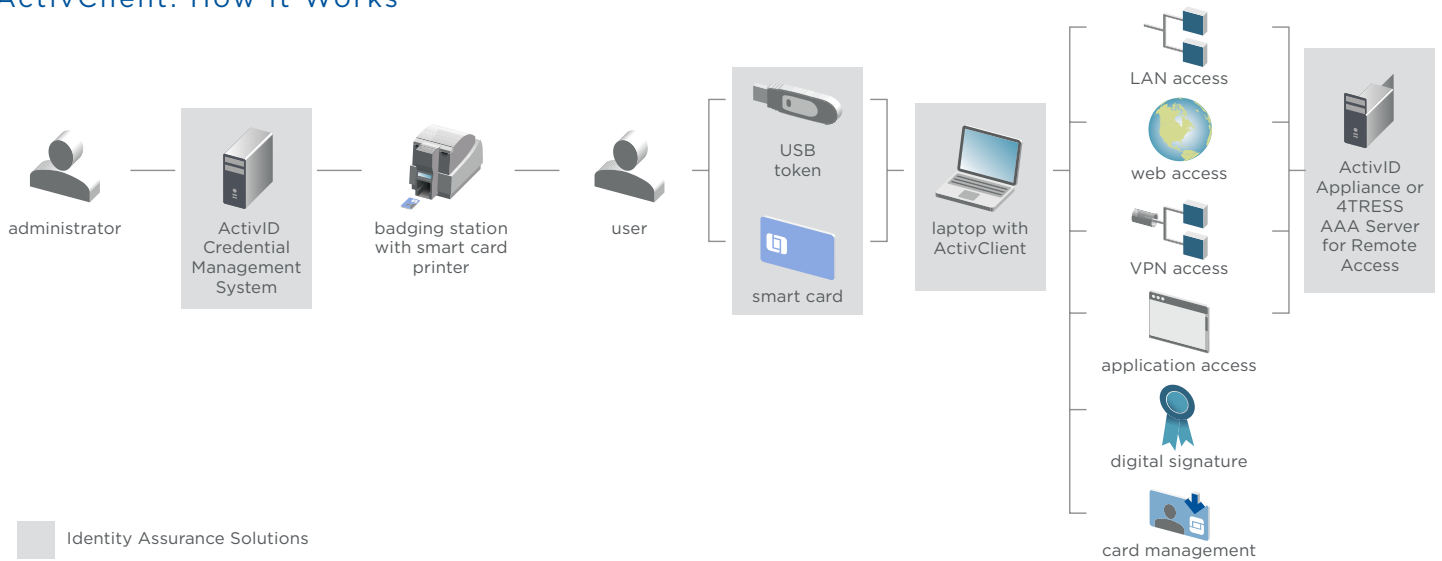
The insider threat to enterprise information assets is rising in the wake of increased layoffs, consolidation and a weak economy. In this environment, the opportunity for insiders to exploit static passwords for business disruption or personal gain is high. HID Global's ActivID® ActivClient® ensures strong authentication of employees, contractors and suppliers when they access enterprise resources to help IT managers, security professionals and auditors manage the risk of unauthorized access to workstations and networks.

As a market-leading middleware for smart cards and USB tokens, ActivClient consolidates identity credentials (private keys for public key infrastructure [PKI] certificates and symmetric keys for one-time password (OTP) generation) on a single secure, portable device. This capability, combined with support for a wide range of desktop, network, and productivity applications, enables organizations to use strong authentication, encryption, and digital signatures to protect highvalue resources and interactions.

**ActivClient Offers:**

- Interoperability with a wide range of remote access solutions, thin clients, applications (e.g., Microsoft® Outlook®, Adobe Acrobat®, and popular web browsers), smart cards, smart card readers and USB tokens
- Compatibility with major certificate authorities and encryption utilities
- Simple automated deployment, updates and diagnostics
- An open, standards-based architecture, which is easily extensible using the companion software development kit
- Support for standard U.S. Government-issued Common Access Cards and Federal Information Processing Standards (FIPS) 201- certified Personal Identity Verification (PIV) cards

## ActivClient: How It Works



Identity Assurance Solutions

**“Deploying ActivClient has been one of our best business decisions for streamlining our Public Works plan approval process – ensuring our digital signature solution is secure and mobile.”**

**Emilio Marin**, CTO, Colegio De Ingenieros De Caminos, Canales y Puertos

### Increased Security

ActivClient allows organizations to protect Windows® workstations and internal networks from unauthorized access. Using ActivClient, IT managers can easily enforce strong authentication policies when users login to their Windows desktop, or access the organization’s network, using a virtual private network (VPN), or remote desktop session.

ActivClient can be deployed with ActivID® AAA Server for Remote Access or ActivID Appliance for OTP validation. This enables organizations to authenticate, using the same smart card, to legacy authentication systems that are not PKI-enabled yet.

ActivClient includes a Windows compliant smart card mini-driver and a PKCS#11 compliant library, enabling email and document digital signature and encryption services with a large number of applications.

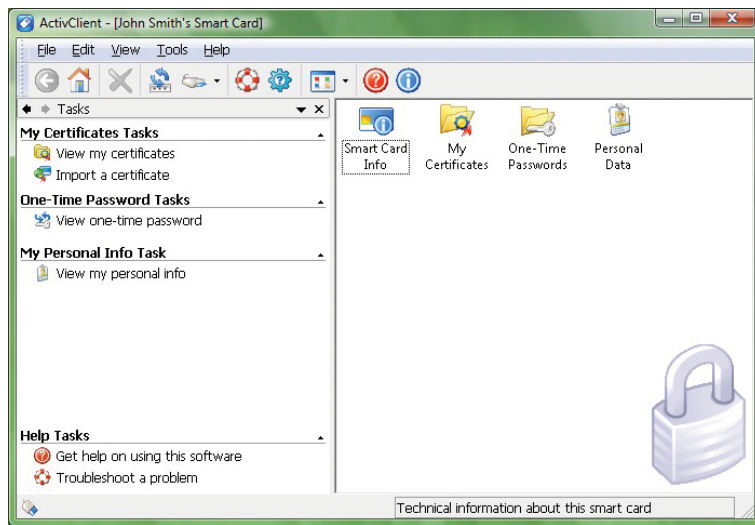
These security services help organizations improve compliance with government regulations (e.g. Sarbanes-Oxley Act Section 302: Internal Controls) and industry standards (e.g. PCI DSS Section 8).

### Lower Smart Card Deployment Costs

ActivClient can easily be deployed and managed via standard software, such as Microsoft Active Directory and Microsoft Group Policy Objects, reducing the cost of smart card deployment.

ActivClient makes PKI easy for the end users. For example, Microsoft Outlook is automatically configured for secure email with the smart card certificates, and the Exchange Global Address List (GAL) is automatically updated with the same certificates. These capabilities provide increased security to end users, without the burden of learning new software capabilities. This significantly reduces help desk costs and the administrative costs normally associated with endpoint security.

## ActivClient User Console



### Flexible Deployment Models

The ActivID Credential Management System (CMS) is a reliable, proven, and extensible solution that enables organizations to securely issue and manage digital credentials on devices. For organizations that need secure PIN management and smart card issuance quickly and easily, HID Global's ActivID CMS Appliance provides a new level of ease of ownership and accelerated time-to-benefit. When deployed with these ActivID CMS products, ActivClient offers a smart card auto-update service, enabling credentials to be centrally updated after card issuance, with minimal cardholder disruption.

For customers without a Credential Management system, ActivClient offers a standalone mode, with an initialization tool for easy issuance and reset of smart cards and USB tokens.

### Security Clients

ActivClient is the enterprise smart card middleware in the HID Global Identity Assurance portfolio. In addition to Windows, it is available for Apple OS X and Linux-based platforms.

HID Global's ActivClient Software Development Kit (SDK) enables systems integrators and independent software vendors to smart card-enable their applications. Software developers do not need specific knowledge of smart card technology to integrate ActivClient services into their applications.

#### ACTIVID APPLIANCE BENEFITS:

- Broad range of authentication methods and devices based on open standards (e.g., OATH, EMV, and PKI)
- Comprehensive management tools providing complete life cycle management for user credentials, soft tokens and devices
- Centralized and tamper-evident audit logs for tracking transactions across channels, improving security and simplifying compliance
- Highly scalable deployment architecture that supports multiple application servers and platforms
- Extensible framework to easily add third-party authentication methods

# SPECIFICATIONS



|                             |   |
|-----------------------------|---|
| <b>System Requirements</b>  | <p>ActivClient 6.2: Windows® 2000, Windows XP, Windows Vista, Windows 7, Windows Server 2003, Windows Server 2008, Windows Server 2008 R2 (32- and 64-bit)</p> <p>ActivClient 7.x: Windows Vista, Windows 7, Windows 8, Windows 8.1, Windows Server 2008, Windows Server 2008 R2, Windows Server 2012, Windows Server 2012 R2 (32- and 64-bit)</p> <p>ActivClient 4.0 for Mac: Mac OS 10.6, 10.7, 10.8 and 10.9</p> <p>ActivClient 4.0 for Linux: Red Hat Enterprise Linux 6.5, CentOS 6.5, Debian 7.3, Ubuntu 12 (32- and 64-bit)</p>  |
| <b>Government Standards</b> | <p>NIST Special Publications 800-73-3 compliant</p> <p>NIST Personal Identity Verification Program (NPIVP) certified</p> <p>GSA FIPS 201 Approved Product</p> <p>U.S. Government Smart Card Interoperability Specifications GSC-IS 2.1</p> <p>U.S. DoD Common Access Card Middleware Requirements v4.0 compliant</p> <p>HID Global Applets - FIPS 140-2 Level 2 and Level 3 certified</p> <p>FDCC / SCAP 1.1 compliant</p> <p>Section 508 compliant</p>   |
| <b>Technology</b>           | <p>Smart Card Mini Driver (ActivClient 7.0), Smart Card CSP (ActivClient 6.2), PKCS#11, Apple token</p>   |
| <b>Security Services</b>    | <p>Secure workstation and network login: Windows Smart Card Login, Novell® Login</p> <p>Secure VPN with Check Point®, Cisco®, Juniper®, Microsoft® and many other remote access solutions</p> <p>Secure Web Login with Google Chrome, Microsoft Internet Explorer® and Mozilla Firefox®</p> <p>Secure remote sessions with Citrix XenApp and Windows Remote Desktop Services</p> <p>Secure email (signature and encryption) with Microsoft Outlook®, Microsoft Exchange / Outlook Web App and Mozilla Thunderbird.</p> <p>Automatic configuration of the Outlook security profile and publication of certificates to the Global Address List</p> <p>Secure documents through digital signature with Adobe Acrobat and Microsoft Office</p> <p>Secure files through Microsoft Encrypting File System (EFS) and BitLocker To Go</p> <p>Entrust Ready: Support for Entrust Entelligence Security Provider and Entrust Entelligence Desktop Solutions*</p> <p>Pre-boot authentication, disk and file encryption with Check Point, McAfee, Safenet, Symantec, Sophos, Trend Micro, WinMagic and more</p> |
| <b>Security Services</b>    | <p>User console for end-users to view and manage their smart card and credentials</p> <p>Smart card presence and activity icon in the Windows notification area</p> <p>Change PIN / unlock card</p> <p>Initialize / reset card</p> <p>Digital Certificates: Certificate viewer, import / export user and CA certificates</p> <p>Generate OTP in synchronous or challenge / response mode, resynchronize event counter</p> <p>View personal information for US DoD Common Access Cards and PIV cards</p> <p>Automatic and secure card update, post issuance, via ActivID Credential Management System</p> <p>Troubleshooting and Advanced Diagnostics utilities</p> <p>MSI-based installer compatible with Microsoft Active Directory and many other software deployment solutions</p> <p>Policy management via administrative templates, compatible with Windows Group Policies</p>   |
| <b>Smart Card Support</b>   | <p>Smart cards and USB tokens from Athena, Atmel, CardLogix, Gemalto, Giesecke &amp; Devrient, HID Global, Keycorp, NXP, Oberthur, Safenet, Sagem Orga and Sharp</p> <p>All generations of the U.S. Department of Defense (DoD) Common Access Cards (CAC)</p> <p>Personal Identity Verification (PIV), PIV-Interoperable (PIV-I) and Commercial Identity Verification (CIV) cards</p>   |



[hidglobal.com](http://hidglobal.com)

North America: +1 949 732 2000  
 Toll Free: 1 800 237 7769  
 Europe, Middle East, Africa: +44 1440 714 850  
 Asia Pacific: +852 3160 9800  
 Latin America: +52 55 5081 1650

© 2014 HID Global Corporation/ASSA ABLOY AB. All rights reserved. HID, HID Global, the HID Blue Brick logo, the Chain Design, ActivID and ActivClient are trademarks or registered trademarks of HID Global or its licensor(s)/supplier(s) in the US and other countries and may not be used without permission. All other trademarks, service marks, and product or service names are trademarks or registered trademarks of their respective owners.

2014-03-07-activclient-security-software-ds-en PLT-01263

An ASSA ABLOY Group brand

**ASSA ABLOY**