

A Full Range of Recording Systems



Ultimate Performance SVR-3200/1680

- 32 Channel half D1 resolution 960fps(N), 800fps(N) recording
- 16 Channel D1 resolution 480fps(N), 400fps(N) recording
- Multi-stream support
- Powerful CMS support as standard
- 16 channel audio recording
- Built-in DVD Writer, Max. 5 ~ 6 multi-monitor
- Convenient Thumbnail/Bookmark search modes



High Quality Recording SVR-1660/1645

- 16 Channel 480fps(N), 400fps(N) real-time recording
- Multi-stream support (SVR-1660)
- Powerful CMS support as standard
- 16 channel audio recording, Various search modes
- Built-in DVD Writer, Max. 3 multi-monitor



Versatile System SVR-960/945

- 9 Channel 270fps(N), 225fps(N) real-time recording
- Powerful CMS support as standard
- Fast backup with DVD writer and USB ports
- Convenient search modes, Max. 3 multi-monitor
- ATM/POS text recording

Super Vision DVR 32Ch/16Ch/9Ch

SVR-3200/1680/1660/1645/960/945



Specifications

		SVR-3200	SVR-1680	SVR-1660	SVR-1645	SVR-960	SVR-945
DISPLAY							
Video	Inputs	32 Composite video 0.5-2 Vpp, 75 ohm automatic termination		16 Composite video 0.5-2 Vpp, 75 ohm automatic termination		9 Composite video 0.5-2 Vpp, 75 ohm automatic termination	
	Resolution Frame Rate	NTSC : 960fps / PAL : 800fps		NTSC : 480fps / PAL : 400fps		NTSC : 270fps / PAL : 225fps	
Live	Resolution	NTSC : 704 x 480 / PAL : 704 x 576					
	Multi Screen Display	1 / 4 / 9 / 10 / 16					
PERFORMANCE							
Recording	Compression	MPEG-4					
	Record Rate	Up to 480fps@704 x 480(N) Up to 960fps@704 x 240(N) Up to 960fps@352 x 240(N) Up to 400fps@704 x 576(P) Up to 800fps@704 x 288(P) Up to 800fps@352 x 288(P)	Up to 480fps@704 x 480(N) Up to 480fps@704 x 240(N) Up to 480fps@352 x 240(N) Up to 400fps@704 x 576(P) Up to 400fps@704 x 288(P) Up to 400fps@352 x 288(P)	Up to 120fps@704 x 480(N) Up to 240fps@704 x 240(N) Up to 240fps@352 x 240(N) Up to 100fps@704 x 576(P) Up to 200fps@704 x 288(P) Up to 400fps@352 x 288(P)	Up to 120fps@704 x 480(N) Up to 240fps@704 x 240(N) Up to 270fps@352 x 240(N) Up to 100fps@704 x 576(P) Up to 200fps@704 x 288(P) Up to 225fps@352 x 288(P)		
Search & Playback	Mode	Manual, Schedule, Event, Emergency					
	Overwrite Modes	Continuous					
	Pre-alarm	Up to 5sec					
	Post-alarm	Up to 60sec					
Search & Playback	Search Mode	Date/Time, Event, Calendar, Thumbnail, Bookmark, Text (Exclusive viewer)					
	Playback Function	REW, FWD, Frame advance (Control keys and jog shuttle)				REW, FWD, Frame advance	
	Transmission Speed	Up to 16Mbps		Up to 9Mbps			
Network	Bandwidth Control			Automatic			
	Multi Stream	MPEG-4 (Dual Stream) / JPEG				N/A	
	Max. Remote Users	10 Simultaneously					
Storage	Protocol Support	TCP/IP, DHCP, DNS, DDNS, HTTP, ARP, ICMP and NTP					
	Monitoring	CMS Software (SNM-128S/P), Built-in web server					
	Maximum Capacity	Up to 16TB using external storage option				Up to 8TB using external storage option	
	Internal HDD	Up to 4 SATA HDDs				Up to 2 SATA HDDs	
Storage	External HDD	Up to 2 expansion bay				Up to 1 expansion bay	
	DVD Writer (Back up)	DVD-R / CD-R					
	USB (Back up)	2 External USB ports					
Security	File Format (Back up)	BMP, AVI, Proprietary format / JPEG (Exclusive viewer)					
	Password Protection	10 User level					
	Data Authentication	Watermark					
INTERFACE							
Monitors	VGA	Analog RGB 800 x 600, 1024 x 768, 1280 x 1024 resolution					
	Main Composite	BNC, 1 Vp-p, 75 ohm, Multi-screen, Menu, Playback		1 BNC, 1 Vp-p, 75 ohm, Multi-screen, Menu, Playback			
	Sub Composite	3 BNC, 1 Vp-p, 75 ohm, Multi-screen, Menu		1 BNC, 1 Vp-p, 75 ohm, Multi-screen, Menu			
Audio	Loop Outputs	N/A		16 Composite video 1 Vpp, 75 ohm		9 Composite video 1 Vpp, 75 ohm	
	Inputs			16 Line in, 30K ohm		9 Line in, 30K ohm	
	Output			1 Line, 100K ohm			
Alarm	Compression			ADPCM			
	Sampling Rate			16KHz			
	Inputs			Terminal 16 inputs, NO/NC		Terminal 9 inputs, NO/NC	
Connections	Outputs			Screw terminal 4 relay outputs, NO/NC			
	Remote Notification			Notification via e-mail			
	Ethernet			RJ-45 10/100 Base-T			
Dome Protocols	Serial Interface			RS-232C			
	PTZ Control Interface			RS-485/422			
	PTZ Keyboard			RS-485, Max. signal voltage $\pm 12V$			
GENERAL	USB			USB 2.0			
	eSATA			2 External SATA ports			
	Application Support			ATM/POS, Mouse, Remote controller			
Supported PTZ Cameras		Samsung Techwin, Pelco D, Pelco P, Panasonic, Bosch, SEC					
Electrical	Input Voltage			100 ~ 240V AC $\pm 10\%$, 50/60Hz, Autoranging			
	Power Consumption	Max. 65W (With 1X HDD) Max. 90W (With 4X HDD)		Max. 65W (With 1X HDD) Max. 85W (With 4X HDD)		Max. 65W (With 1X HDD) Max. 90W (With 4X HDD)	Max. 65W (With 1X HDD) Max. 85W (With 4X HDD)
	Operating Temperature			+5°C ~ +40°C (+32°F ~ +104°F)			
Mechanical	Operating Humidity			0% ~ 60%RH			
	Dimensions (WxHxD)			445 x 88 x 388mm (17.52" x 3.46" x 15.28")			
	Weight (4X Hard Disks)	Approx. 10Kg (22.06 lb)		Approx. 8Kg (17.64 lb)		Approx. 5Kg (11.02 lb)	
Language	Rack Mount Kit	For mounting one unit in an EIA 19 inch rack					
		English, Korean					
		Soanish, French, German, Italian, Portuguese, Polish, Russian, Turkish, Japanese (Languages will be added to next firmware version)					

* Some functions will be added to next firmware version.



The Eco mark represents Samsung Techwin's will to create environment-friendly products, and indicates that the product satisfies the EU RoHS Directive.



SAMSUNG TECHWIN CO., LTD.
145-3, Sangdaewon 1-dong, Jungwon-gu, Seongnam-si, Gyeonggi-do Korea 462-703
Tel : +82-31-740-8151 ~ 8 Fax : +82-31-740-8145
www.samsungcctv.com

SAMSUNG TECHWIN AMERICA
1480 Charles Willard St. Carson, CA 90746, UNITED STATES
Tel : +1-310-632-1234 Fax : +1-310-632-2195
www.samsungcctvusa.com

SAMSUNG OPTO-ELECTRONICS UK, LTD.
Samsung House, 1000 Hillwood Drive, Hillwood Business Park
Chertsey, Surrey, UNITED KINGDOM KT16 0PS
Tel : +44-1932-45-5308 Fax : +44-1932-45-5325

TIANJIN SAMSUNG OPTO-ELECTRONICS CO., LTD.
No.9 Zhangsheng Street, Micro-Electronic Industrial Park
Jingang Road, Tianjin, P.R. CHINA 300385
Tel : +86-22-23887788-8503 Fax : +86-22-23887788-8505

Dimensions

Unit : mm



SVR-3200



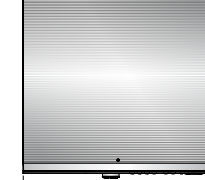
SVR-1680



SVR-1660



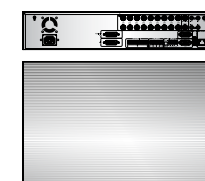
SVR-1645



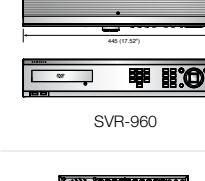
SVR-960



SVR-945



SVR-960



SVR-945

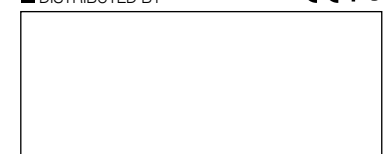


SVR-945



SVR-945

■ DISTRIBUTED BY



I.D-0808

Full D1 Quality Recording in Real-time



SVR-3200/1680/1660/1645/960/945

imagine High Quality Real-time Recording

The SVR series include cutting-edge digital recording systems that achieve D1(704 x 480) high resolution image real-time recording capability, Multi-stream for optimal network images, CMS network integrated system support, and powerful search and playback features for enhanced convenience.

Preliminary

SAMSUNG TECHWIN





Samsung Techwin introduces Super Vision Recording Systems

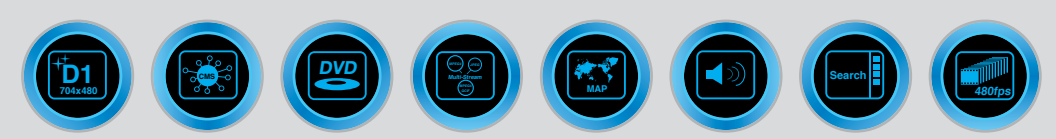
The Samsung Techwin's high-tech DVR series, SVR-3200/1680/1660/1645/960/945 are 'Super Vision Recording Systems that provide D1 high resolution video real-time recording capability and real-time high quality network monitoring with multi-stream and CMS management features. Also, the DVRs are equipped with a wide range of smart functions for user convenience and system reliability, enabling the user to have a premium quality recording and monitoring system at any time.

As if you are watching a high quality movie...

**High resolution D1 image real-time recording
Powerful Functions, Flexible Systems**



- D1 (704 x 480) 480fps(N) real-time video recording
- Multi-stream support for optimized network monitoring
- Powerful CMS support as standard
- 16 channel audio recording, Thumbnail search
- Built-in DVD writer, Max. 6 multi-monitor



Super Vision Digital Video Recorder
SVR-3200/1680/1660/1645/960/945

High Image Quality Live & Recording



Home Theater... High Quality image



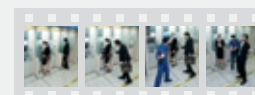
Real-time High resolution (704 x 480, N) Recording

- The SVR series have applied a high speed data processing technology for all channel MPEG-4 full-frame compression, thus it has been achieved to record and play D1(704 x 480, N) level high resolution images of 480fps in real time. (SVR-3200/1680)

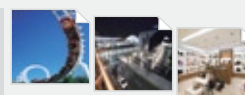


CIF (352 x 240, N)

D1 (704 x 480, N)



MPEG-4 Recording



High Quality Still Image Recording



16 Channel Audio Recording

Audio recording is possible on up to 16 channels, and there is an audio detection feature so that event recording is possible when sound is input at a specific level.



Emergency Recording Mode

Regular recording and event recording or schedule recording and event recording can be set at the same time for an optimal response to various usage circumstances. Also, the DVR provides an emergency recording feature so that important video data is not lost when urgent situations arise.



Reliable DVR File System

Incorporating a high-capacity and high speed data storage technology, the SVR series allow the user full-channel recording and playback of D1 images (704 x 480). Also, as header motion of a hard disk has been effectively minimized, HDDs of the DVRs have less emission of heat and a longer life-time now.

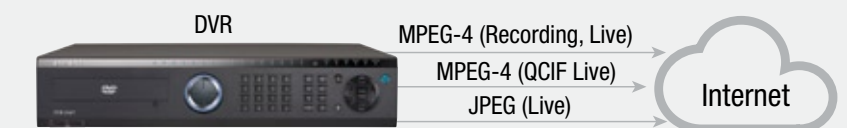


Enhanced Network Monitoring



Multi-stream Support for Real-time Monitoring

The network codec chip is added to the SVR series in order to specifically support JPEG and QCIF files along with other saved images and live images ; this allows the high-quality, real-time monitoring given the optimal network condition.



Convenient Monitoring with Web viewer

The DVR has a built-in web server that enables users to monitor and playback DVR images through the Web viewer regardless of place and time.



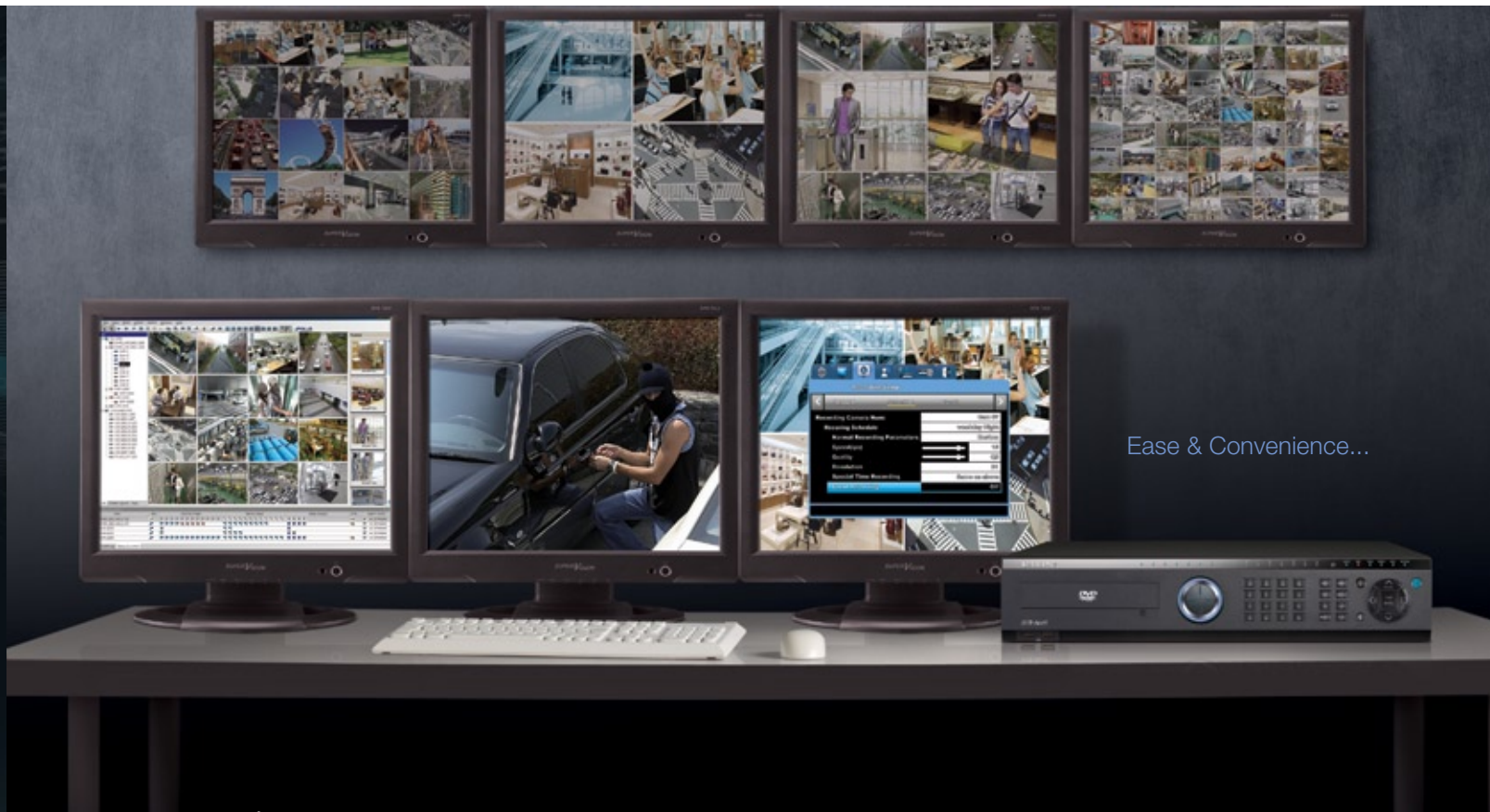
Web-viewer Monitor

Web-viewer Playback

Powerful Network Management

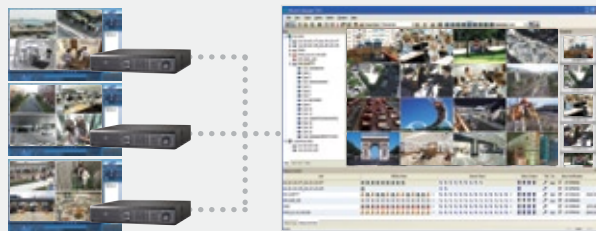


Advanced User Convenience



Powerful CMS Support (SNM-128S/P)

The SVR series support the CMS for integrated network management. The Samsung Network Manager, SNM-128S/P is a powerful centralized management solution that monitors multiple sites with video, audio and alarm signals over the network.



Max. 128 Channel Real-time Monitoring

The SNM-128S/P can monitor up to 128 channels from anywhere in the world simultaneously. A maximum of 64 cameras can be shown on one monitor. It also supports a wide variety of screen split modes such as 1, 4, 9, 13, 16, 25, 36 and 64 divisions.



Enhanced Event/Alarm Management

The users can check the event with more ease via enhanced event/alarm functions such as List, Map, Beeper, Live Image, and Tree modes.



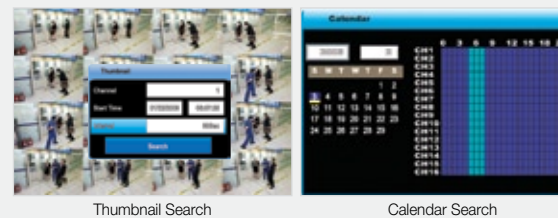
Powerful MAP Viewer Support

Map viewer feature is supported with the SNM-128S/P. It provides graphic map information of the alerted areas when events occur, ensuring more efficient security management.



Various Quick & Easy Search Modes

- **Thumbnail Search**
Users can check videos in the thumbnail image viewer and find saved videos more quickly
- **Book Mark Function**
When users register desired playback points, users can directly play the video when needed without searching it again.
- **Calendar Search**
Videos can be easily searched for by just entering a selected date and time.



Multi-monitor Support

Max. 3 to 6 multi-monitors can be connected with the DVR, providing total image security management.



High Speed DVD Back up

The DVR comes equipped with a high speed DVD Writer that can back up large data much faster. For example, 4 giga bytes of data can be copied to a DVD within just 30 minutes. In addition, easy backup with front USB ports are also provided.



High Quality Real-time DVR



Maximum 16TB Capacity

Up to 4 internal HDDs can be installed in the DVR for long-term archiving, and SVS-5E, an external hard drive equipment can also be used to expand the storage capacity up to 12HDDs.
(* Up to 16TB expansion is possible including internal/external HDDs)



ATM/POS Text Recording

The SVR series are compatible with ATM, POS, or access control devices, so the texts can be saved along with associated images, and also played back later.



System Controller

Using the SCC-3100A, a system controller, integrated control of up to 255 DVR and Speed Domes is possible. It is equipped with multi protocols to connect with and control various devices from other manufacturers as well allowing users to set up a large sized security system easily.



Convenient Design

The SVR-3200/1680/1660/1645 provide a jog dial and LED indicator lamps for greater convenience. Furthermore, it has a polished black color and mirrors, further enhancing its high quality and reliability as a security product.

