

Exceeding Every Expectation..



imagine Premium Security

The age of premium security has arrived. Samsung Techwin is introducing a DVR that has it all ; an unbeatable performance and stability that screams out loud with creativity, such that only the right combination of tomorrow's philosophy and technology can produce. Experience what a truly safe and trustworthy security product can provide, experience the SVR-1650/1640.



Speed, performance, ease of use,
and terrific design
The ONE that has it all...



The SVR-1650/1640 is a 16 channel stand-alone DVR showcasing state-of-the-art digital image processing technology. The MPEG-4 compression technology was used to build the SVR-1650/1640 to give it a capability to record video at 480fps/120fps (NTSC). The SVR-1650/1640's high performance image processing unit stabilizes network transmissions and improves network speed to an incomparable level. You can configure up to 4 internal HDD for 720 x 480, crystal clear, high resolution image data storage, and the standard DVD+RW, together with a USB memory stick, provide convenient ways to back-up large data. The SVR-1650/1640 is controlled by a mouse, something you are already familiar with. Together with the user friendly GUI, controlling the SVR-1650/1640 couldn't be easier. It also comes with standard multi-protocol for easy networking with other peripherals. All the premium functions are included in the SVR-1650/1640 to give you the highest level of security, and its luxurious design will upgrade the elegance of your video surveillance system.

Luxury & Stylish

SVR - 1650/1640



Design

Hand polished look in mirror finish black

The SVR-1650/1640 has a feature of hand polished look in mirror finish black to reinforce trust and class, and the finely detailed aluminum body adds solidity to this security product.

Logical control button and jog-dial location

For user convenience, all the function buttons are logically placed, and the jog-dial located on the front center is for simple but effective image searches. Checking operational status of different functions is as easy as looking at sky-blue, white, or red LED lights.





High Quality Picture...

Image Capability



High performance recording using MPEG-4 technology

The latest MPEG-4 compression method supported by the 1650/1640 processes 480fps live displaying and 480fps/120fps high quality video recording, and its superior capability allows it not to lose even a single image.



Supports high resolution image

The SVR-1650/1640 supports 720 x 480 and other various high resolution images making monitoring of DVD-like high-definition images under any environment possible.



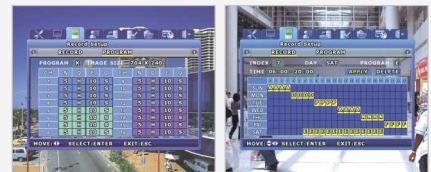
Conventional DVR

SVR-1650/1640



Multiple recording settings

The SVR-1650/1640 can be set for general, event, and / or scheduled recording simultaneously, so it is ready to handle any operating environment. Additionally, the image quality can be set to four different levels for more effective control of recording quality.



General / Event recording

Scheduled recording

Ease & Convenience...



Ease of Use



Various controllers including mouse, remote control and system controller

The SVR-1650/1640 comes with an infrared wireless remote control, and offers simple GUI and a mouse for experienced PC users. The graphic menu of the SVR-1650/1640 has Hot Function icons to aid mouse users and to provide a better working environment. Additionally, a system controller (SCC-3100) can be used to control PTZ dome cameras connected to a DVR plus multiple DVRs simultaneously, providing an easy and convenient user environment only a stand-alone product can provide.

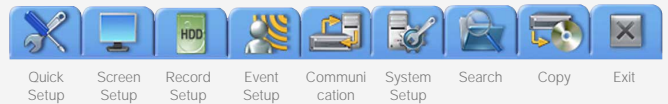


Hot Function icons



Easy-to-use and convenient GUI

Pop-up style menu and GUI makes learning how to operate the SVR-1650/1640 very easy, even for a digital equipment novice.



Front USB port and AV output port

2 front USB ports are very accessible for connecting mouse or back-up devices like DVD+RW or USB memory sticks. Video/audio ports are also located on the front so connecting cables-for system expansion or for connecting other peripherals- is very easy.



USB memory stick connecting

Video/audio ports connecting



Network



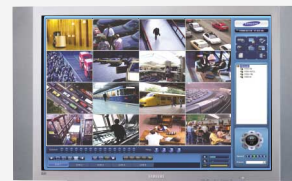
Optimal network speed

The SVR-1650/1640 recognizes line status automatically and configures the optimal network according to its environment.



Stable network speed

Image processing chip for networking was used in the SVR-1650/1640 to prevent interference from the main system's surveillance, record, play, and other settings during data transmissions. Therefore, it performs at its best and transmits data at a maximum speed of 480fps under any circumstance. (SVR-1650)

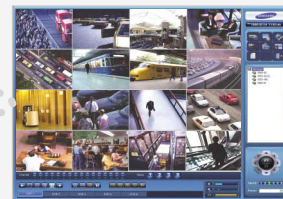


16 Channel Display



Manages up to 5 DVR simultaneously

The Network Viewer, a standard application provided, can be connected to five SVR-1650/1640 and manage all of them simultaneously. The Network Viewer supports live video monitoring of DVR, replay, menu setting modification, PTZ camera control, and other functions through a network.



Network Viewer



Scalability



Large data back up using DVD+RW

Since the SVR-1650/1640 is a premium DVR, it comes with a DVD+RW to support high capacity, high resolution record data back-ups. The front USB port can also be used for easy data back-up to a USB memory stick.



Built-in 250GB HDD, expandable up to 2TB

The SVR-1650/1640 comes equipped with large 250GB internal HDD and supports up to four internal HDD making it ideal for long-term data storage. (Up to 2TB with 4 x 500GB HDD)



Supports scalability of DVR/PTZ Dome using system controller

With the system controller SCC-3100, up to 255 DVR and PTZ dome cameras can be controlled. The SVR-1650/1640 provides multi-protocol to support connecting and controlling a variety of peripherals which makes it easy to build medium to large security systems.



SCC-3100



Supports text recording of ATM/POS transaction

The SVR-1650/1640 can process text inputs and save, replay, or display them on a monitor. These capabilities are ideal for networking with POS or ATM systems in financial institutes or retail businesses.

ATM/POS



Audio port : 4 in / 2 out, Sensor port : 16 in / 4 out

The SVR-1650/1640 supports 4-channel audio input line, and the inputted audio data can be saved simultaneously with the video data and is searchable. Multiple system configurations can be built by using the SVR-1655/1640's 16 channel sensor input and 4-channel relay output.



Premium 16 Channel Stand-Alone Digital Video Recorder

SVR-1650/1640

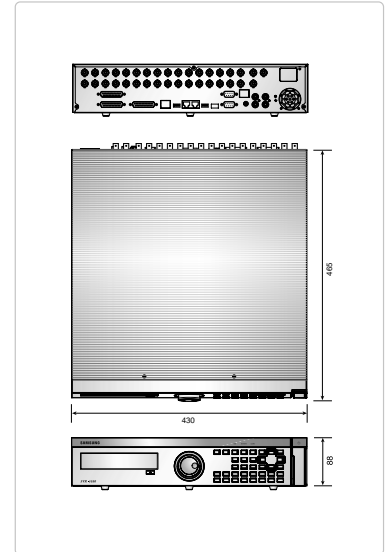


Specifications

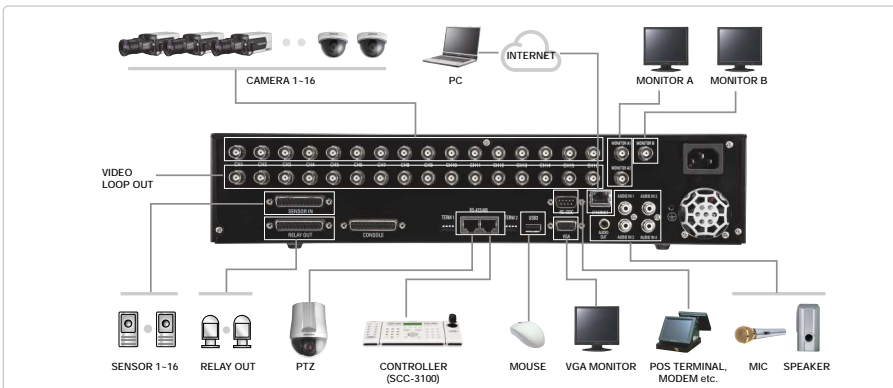
Mode		SVR-1650	SVR-1640
Power Source		100-240V AC, 50/60Hz	
Power Consumption		Max. 75W (1 HDD)	
Video Input		16 Channels	
Video Output	Monitor A	2 BNC, RCA, VGA	
	Monitor B	1 BNC (Single / Multi)	
Compression		MPEG-4	
Display	Speed	480fps / 400fps (PAL)	
	Resolution	720 x 480 / 720 x 576 (PAL)	
	Multi Screen	1 / 4 / 9 / 16	
Recording	Speed / Resolution	120fps / 704 x 480, 100fps / 704 x 576 (PAL)	30fps / 704 x 480, 25fps / 704 x 576 (PAL)
		240fps / 704 x 24, 200fps / 704 x 288 (PAL)	60fps / 704 x 240, 50fps / 704 x 288 (PAL)
	Mode	480fps / 352 x 240, 400fps / 352 x 288 (PAL)	120fps / 352 x 240, 100fps / 352 x 288 (PAL)
		Manual + Event, Schedule + Event	
HDD		250GB 1HDD (Max. 4HDDs)	
Back up		DVD+RW, 3 USB (2 Front) / USB flash memory drive	
Serial Interface		RS-232C, RS-485/422 (RJ-45)	
Sensor Input / Relay Output		16 / 4	
Audio	Input / Output	4 / 2 (1 Front)	
	Interface	RCA jack	
Network	Protocol	TCP/IP, DHCP, SMTP	
	Software	Network viewer	
	Transport Speed	Max. 480fps / 400fps (PAL)	Max. 120fps / 100fps (PAL)
Control		Mouse, Remote control (Controllable up to 16 DVRs), System controller (SCC-3100)	
OSD (On Screen Display)		Screen SMS : ATM/POS support, Password : 2 level (Admin, User) Image quality adjustment : 4 level (Super, High, Middle, Low) support	
Temperature Range	Operation	5°C ~ 40°C	
	Storage	-10°C ~ 60°C	
Dimensions		430(W) x 88(H) x 465(D)mm	
Weight		8.9kg (1 HDD)	

Dimensions

Unit : mm



System Configuration



www.samsungcctv.com

Design and specifications are subject to change without notice.



SAMSUNG TECHWIN CO., LTD.
145-3, Sangdaewon 1-dong, Jungwon-gu,
Seongnam-si, Gyeonggi-do Korea 462-703
Tel : +82-31-740-8137-8139 Fax : +82-31-740-8145

TIANJIN SAMSUNG OPTO-ELECTRONICS CO., LTD.
7 Pingchang Rd., Nankai Dist. Tianjin 300190, P.R. China
Tel : +86-22-2761-4724(33821) Fax : +86-22-2761-6514

SAMSUNG OPTO-ELECTRONICS UK, LTD.
Samsung House, 1000 Hillwood Drive,
Hillwood Business Park Chertsey, Surrey KT16 0PS
Tel : +44-1932-45-5308 Fax : +44-1932-45-5325

DISTRIBUTED BY



I.D-0606