

High Performance Thermal Night Vision Camera
STC-14

0 Lux

360m

4X

Sensor

Light Weight

Infrared

OSD

IP66

Remote

RS-485

24VAC

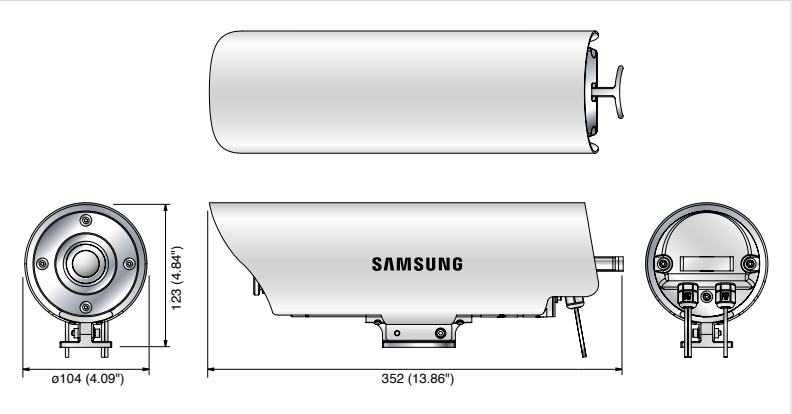


Specifications

	STC-14
Input Voltage	24V AC, 50/60Hz
Power Consumption	Max. 10.5W (22W when heater on)
Sensor Type	Microbolometer
Sensor Effective Pixels	320(H) x 240(V)
Sensor Pitch	23.5μm
Spectral Response	8 ~ 14μm
Minimum Discernable Temperature	0.08°
Frame Rate	30fps
Video Output	VBS : 1.0VP-P,75Ω composite
Synchronization	Internal
Lens	F1.4, f=14mm
Focal Length (Focal Range / Adjustment)	0.5m ~ ∞ (Upon factory release : 3m ~ ∞ Pan focus adjusted)
Viewing Angle (HxV)	30.1° x 22.8°
Digital Zoom	Built-in (2 ~ 4X)
OSD	Built-in (Currently supported languages : English, Japanese)
Noise Reduction	3D-DNR (4 levels : Low / Medium / High / Off)
B/W Inversion	BW / WB (256 levels)
Brightness / Contrast	11 levels / (Auto, Manual : 10 levels)
Object Temperature	Auto / Manual (2 levels) Low (-40°C ~ 150°C), High (0°C ~ 540°C)
Sharpness	6 levels : Off ~ 5
Communication Specification	RS-485
Protocol	Samsung Techwin & Pelco-D
Dust/Waterproof Standard	IP66
Operating Temperature	-30°C ~ +55°C (Auto heater)
Storage Temperature	-40°C ~ +70°C
Dimension (WxHxD)	ø104 x 123 x 352mm (4.09" x 4.84" x 13.86")
Weight	Approx. 2.2Kg (4.85 lb) (Including cables)
Certifications	FCC (Class A), UL/cUL listed, CE (Class A)

Dimensions

Unit : mm (inch)



Design and specifications are subject to change without notice.

 The **Eco mark** represents Samsung Techwin's will to create environment-friendly products, and indicates that the product satisfies the EU RoHS Directive.

SAMSUNG
SAMSUNG TECHWIN

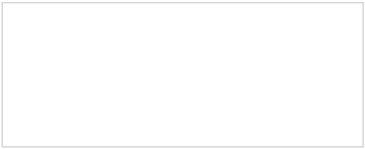
SAMSUNG TECHWIN CO., LTD.
145-3, Sangdaewon 1-dong, Jungwon-gu, Seongnam-si, Gyeonggi-do Korea 462-703
Tel : +82-31-740-8151 ~ 8 Fax : +82-31-740-8145
www.samsungcctv.com

SAMSUNG TECHWIN AMERICA Inc.
1480 Charles Willard St. Carson, CA 90746, UNITED STATES
Tel Free : +1-877-213-1222 Fax : +1-310-632-2195
www.samsungcctvusa.com

SAMSUNG TECHWIN EUROPE CO., LTD.
Samsung House, 1000 Hillwood Drive, Hillwood Business Park
Chertsey, Surrey, UNITED KINGDOM KT16 0PS
Tel : +44-1932-45-5300 Fax : +44-1932-45-5325

TIJUN SAMSUNG TECHWIN OPTO-ELECTRONICS CO., LTD.
No. 11 Wei 6 Street, Micro-Electronic Industrial Park
Jingang Road, Tianjin, P.R. CHINA 300385
Tel : +86-22-23887788 Fax : +86-22-23887788

■ DISTRIBUTED BY



I.E-0903

SAMSUNG **SAMSUNG TECHWIN**



Thermal Monitoring
Best Night Monitoring Solution!

STC-14

High Performance Thermal Night Vision Camera

- Outstanding 360m Detection Range with No Lighting
- Intricate Imaging with High-Powered Infrared Sensor
- 0.08°C Excellent Temperature Resolving Power
- IP66 Approved Dust/Waterproof, Customizable OSD
- Light Weight and Effective Cost

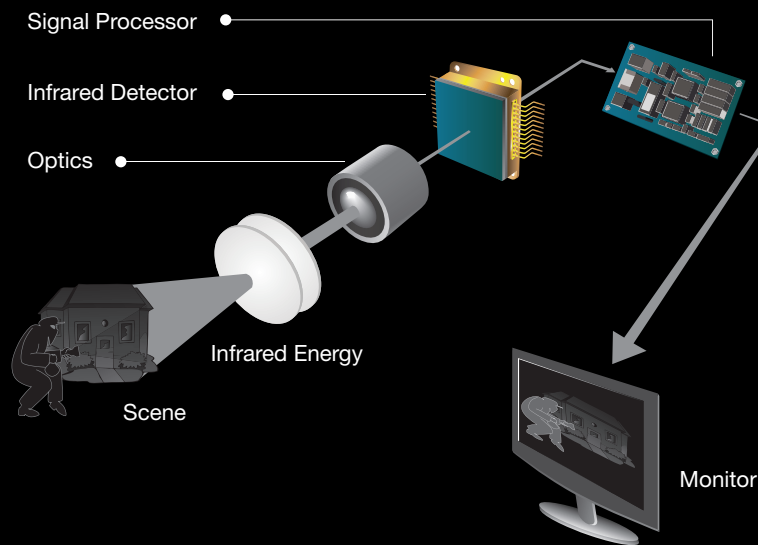


www.samsungcctv.com

Zero Light Detection Detect Objects in Pitch Darkness!

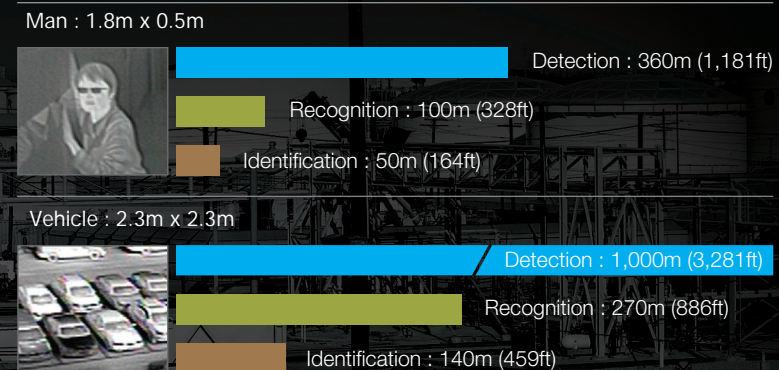
Thermal Night Vision Camera

The Thermal Night Vision Camera is an advanced camera that detects differences in the infrared energy of objects and the background, converts them into electric signals, and produces digital images.



360m Long-Ranged Detection

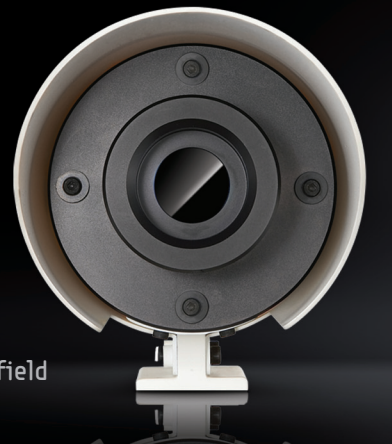
With detection capacity unparalleled by cameras in the same class, the STC-14 can capture objects at a maximum range of 360m.



Never Miss A Move...

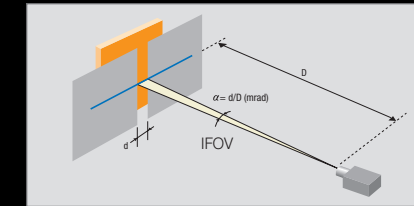
24/7 Powerful Monitoring STC-14

The STC-14 is a cost-effective and stable night vision camera equipped with a microbolometer thermal imaging sensor. Embedded with advanced infrared imaging technology, it is suitable for short- and medium-range monitoring purposes and offers astoundingly sharp and finely detailed images with its high performance sensor and wide field of view. It is light, yet rugged, making it an ideal solution for 24/7 powerful monitoring.



High Performance Sensor for Intricate Imaging

Equipped with a high performance infrared sensor with an IFOV (Instantaneous Field-of-View) of 1.68mrad, the STC-14 is capable of capturing a greater level of detail than other cameras in the same class.



* IFOV (Instantaneous Field-of-View)
A measurement of a sensor's intrinsic field of view corresponding to the amount of light that a sensor can detect at an instant; the smaller it is, the fuller an image looks.

Light Weight and Cost-Effective Camera

Weighing a mere 2Kg, the STC-14 is much lighter than conventional thermal night vision cameras, allowing it to be installed in a wider range of locations. The cost-effectiveness and versatility of the STC-14 lets you create an advanced thermal security monitoring system on budget.



Excellent Object Detection with High Temperature Resolving Power

With a minimum discernable temperature of 0.08°C, the STC-14 detects objects and forms images clearly.



Conventional Camera

STC-14

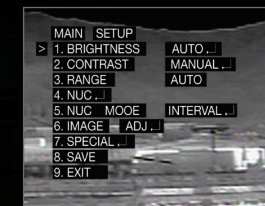
IP66 Approved Dust/Waterproof Camera

The STC-14 features an integrated housing that is tested to the IP66 dust and waterproof standard. This all-weather camera performs stable under all harsh weather conditions.



On Screen Display & Customizable Options

This camera supports an On Screen Display menu, and allows people to customize the contrast, brightness, and sharpness of images.



Removable Lens

To aid the longevity of the STC-14 camera it is possible to swap the lens if it becomes damaged, without the need to replace the whole camera, thus making it a more cost effective solution.

SAMSUNG