

iPOLiS Connect & Protect Life...

The world of **iPOLiS** is beginning now.

imagine Peace of Mind Anytime, Anywhere

iPOLiS network products support fast high-resolution video transmission, MPEG-4/JPEG compression, real-time monitoring through web browsers, diverse protocols, and bi-directional audio transmission. With excellent network performance, **iPOLiS** network products make the world convenient and safe anytime, anywhere.



SAMSUNG TECHWIN

SAMSUNG

With **iPOLiS**, the world gets even closer.

Fast, easy monitoring through the **Internet** anytime, anywhere !

Speedy, clear digital images ! **Real-Time** surveillance !

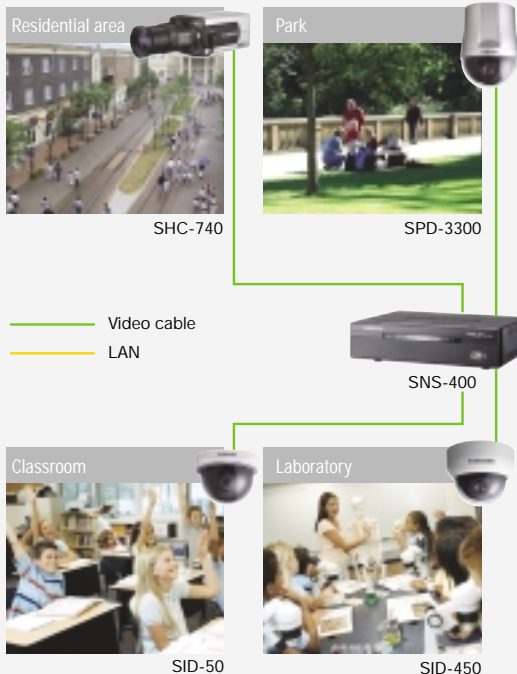
Integrated network control with the **Network Manager** !



A brand that is integrated into Samsung's network products, **iPOLiS** stands for a convenient world (Polis) made safe (Police) through Samsung's superior network performance (Internet Protocol). With **iPOLiS** products' clear digital images transmitted over the Internet, real-time monitoring is possible anywhere with an Internet connection. Easy remote control functions and the use of existing networks minimize installation costs. With **iPOLiS**, experience a world of convenience connected anytime, anywhere.

Urban security

With the **iPOLiS** network system installed in public facilities such as residential areas, roads, and parks, the safety of residents can be secured in real time.



Nursery/School/Educational Institute

Views of class or experimental activities at nurseries, schools or educational institutes can be transmitted to parents or other suitable people in real time.

Shop security

The status of shops, exhibits, or self service stores can be checked and controlled remotely and round the clock.



Internet user



Clear Image!
Fast Transport!
Easy Control!

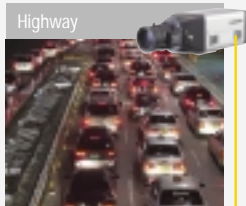


iPOLiS, a high image quality network surveillance system

Samsung **iPOLiS** network cameras and servers facilitate Ethernet interface, easy Internet connection, and allows high-resolution image transmission through MPEG-4/JPEG compression technologies, Web Viewer support and bi-directional audio transmission. The Network Manager, which can control and integrate remote networks, enables a connected world where it is possible for anyone to monitor their homes, offices, schools, etc. from anywhere in real time.

Road traffic monitoring/Illegal parking control

Real-time road traffic flow or control status can be transmitted; illegal parking can be checked and controlled.



SNC-550



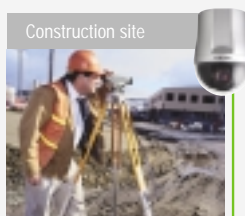
SPD-3000



SNS-100

Construction site/Logistics warehouse control

Building construction sites or warehouse product flow status can be transmitted to a site office or to managers in real time.



SPD-3300



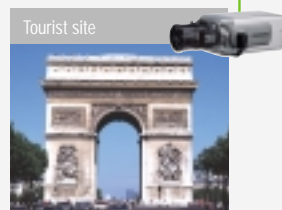
SDC-415



SNS-400



SNC-550



SHC-730

Promotion of theme parks/tourist sites

With real-time transmission of images of theme parks, tourist sites, or various events, it is possible to enhance the promotional effect.

net

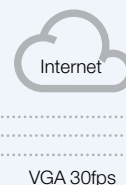
Headquarters/Branches





Real-time transmission of **VGA** high-resolution images at **30fps**

iPOLiS network products can transmit distortion-free images in all resolution and VGA high resolution images at up to 30fps.



VGA 30fps

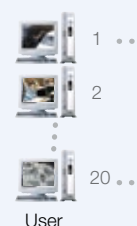


MPEG-4/JPEG compression support

With the selective application of MPEG-4 and JPEG compression formats, the best image quality can be provided flexibly, depending on the available transmission bandwidth.

A built-in web server for simultaneous connection of up to **20 users**

With the built-in web server, real-time monitoring is possible through the Web Viewer and Network Manager over the Internet anytime, anywhere.

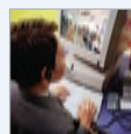


User



Bi-directional audio transmission support

Not only can the sound at a remote site be heard clearly but warning messages from the control room can also be heard at the remote site.



Internet



E-mail notification of alarm images

Once the alarm is activated when movement is detected, the site image can be transmitted immediately through the operator's e-mail and FTP server for notification purposes. The images are stored in 2 types of compression format for best quality alarm image between .jpg and .ste (Slim Player file type).



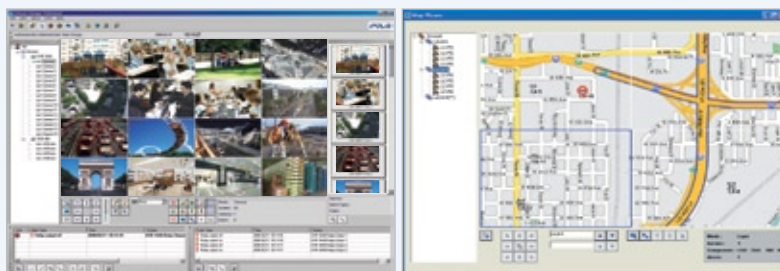
E-mail





CMS integrated management (Samsung Network Manager)

iPOLiS network products provide a professional CMS, 'Samsung Network Manager'(SNM-64S/P). It can monitor up to 128 channels from anywhere in the world at the same time and supports max. 3 monitor connection for more efficient system control. Users can control bi-directional audio, PTZ functions of cameras, and relays of each unit with ease. It also supports enhanced map viewer and event/alarm management solution for smart network monitoring and convenient search by thumbnail, event, or text category.



Real-time surveillance with web viewer

With the support of the Web Viewer that can be connected through the Internet, the user can monitor sites anytime, anywhere.



iPOLiS Web Viewer

SDK support

iPOLiS products provide the STW SDK kit that allows for 3rd party engineers to develop further programs or functions. It contains various functions such as single/multi live monitoring, DVR recording date playback, DVR recording date back up, configuration control, and discovery.

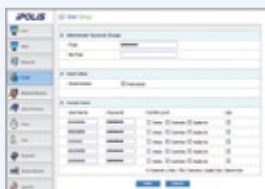
Dynamic IP registration and DDNS support

Even inexperienced users can easily configure network settings and get a domain name by connecting to www.samsungipolis.com, as a stable Dynamic IP is provided.



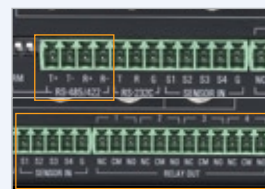
Highly reliable security system

iPOLiS series provides system security in the form of multiple access passwords and control message encryption. Perfect security is possible with password setting by user groups, encryption between cameras and applications, and video connection verification.



Sensor input/output and remote control

With a sensor input/output function, and PTZ and external device control support, **iPOLiS** enables the user to establish an integrated total security system.



SNC-550

High-resolution Day & Night Network Camera

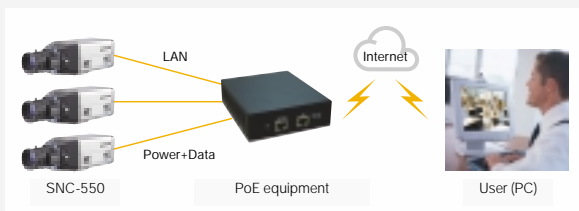
The SNC-550 facilitates the selective application of MPEG-4 or JPEG compression algorithms and high-resolution video transmission at up to 30fps. The SNC-550 supports diverse additional functions including a Day & Night function, 530TV lines of horizontal resolution, PoE, motion detection, and privacy masking.

iPOLiS



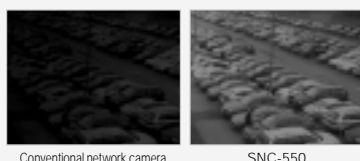
PoE (Power over Ethernet) support

Since power is supplied through the LAN cables, there will be less complicated cabling and the installation cost will be substantially reduced (IEEE 802.3af).



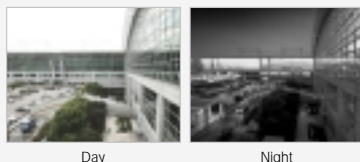
Powerful ultra-low sensitivity of as low as 0.002Lux

The SNC-550 provides a powerful night surveillance function that can recognize objects at night with an illumination of as low as 0.002Lux in Sens-up mode.



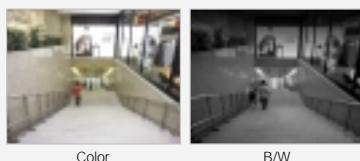
Day & Night (Removable IR cut filter) and SSNR (Samsung Super Noise Reduction)

The high performance Day & Night function, with an automatic filter removal method and SSNR technology that effectively eliminates noise and ghosting, provides clearer image quality.



Analogue output support

Besides network output, the SNC-550 also supports analogue output through BNC connectors.

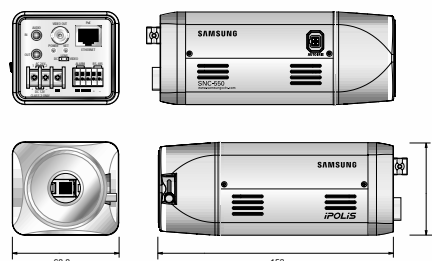


Specifications

Mode	SNC-550(N)	SNC-550(P)
Power Source	12V DC / 24V AC (±10%) / PoE (IEEE 802.3af)	
Power Consumption	About 6W	
Hardware	CPU	SAMSUNG ARM CPU (200MHz)
	OS	Embedded Linux
Camera	CCD	1/3" Super HAD CCD
	Horizontal Resolution	Color : 530TV lines (Min.) / B/W : 570TV lines (Min.) through BNC 0.3Lux@F1.2 (Normal color mode) 0.01Lux@F1.2 (B/W mode) 0.002Lux@F1.2 (Sens-up mode)
	Min. Illumination	
	Day & Night	Off / Auto selectable (ICR filter change)
	White Balance	ATW / AWC / Manual selectable (1,800°K ~ 10,500°K)
	Sens-up	On / Off (Selectable limit 2X ~ 128X)
	SSNR	Low / Middle / High / Off selectable
Compression Method	MPEG-4 / JPEG selectable video compression, ADPCM audio compression	
	Compression / Transmission Speed	Video : Max. VGA 30fps Video : Max. VGA 25fps
Image Quality Control	5 levels	
Audio Input / Output	1 / 1	
Internet Browser	MS Internet Explorer ver 5.5 or higher	
Resolution	704 x 480, 704 x 240, 352 x 240 704 x 576, 704 x 288, 352 x 288	
Security	Password (User authentication), Control message encryption	
DIO Supports	1 Sensor input, 1 Alarm output	
Pan / Tilt / Zoom Control	Support (RS-485)	
User Connection	20 Users	
Protocol Supported	TCP/IP, DHCP, HTTP, SMTP, FTP, DDNS, PPPoE, NTP	
Misc. Function	Motion detection, Privacy masking, Event / Alarm, FTP / E-mail notification	
	System Resource	
Network Interface	32Bit RISC processor, 64MB SDRAM, 64MB flash, 512KB ROM	
Viewer Application	10/100 Base-T Ethernet using RJ-45, Static / Dynamic IP support	
DDNS	Network management software / Web viewer	
SDK	Support (xDSL, DHCP, Cable modem, etc)	
Operating Temperature	3rd Party SDK support	
Dimensions	0°C ~ 40°C	
Weight	68.8(W) x 60.4(H) x 152(D)mm	

Dimensions

Unit : mm



SNS-400/100

4CH/1CH Video Network Servers

The SNS-400/100 are high efficiency, high-performance 4 channel/1 channel video network servers that convert analogue-based systems into an MPEG-4/JPEG compression format IP surveillance system via the network. Surveillance is possible with a network image output at up to 120fps (CIF).



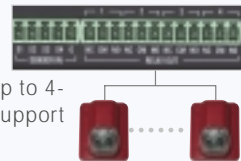
Remote Pan/Tilt/Zoom control

Remote PTZ camera control is possible with connection through RS-485/422 port. It is also possible to control PTZ menu over the internet with the Web viewer.



Sensor & Alarm support

An alarm is available through motion detection and event setting with up to 4-sensor input and 4-alarm output support (SNS-400).



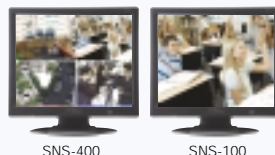
Storing images when an event occurs

Using a USB memory card, it is possible to store images when the alarm goes off, triggered by motion detection. It is also possible to search images by event in a remote site.



Analogue output support

Quad-split screen analogue video is supported to verify the input camera's images.



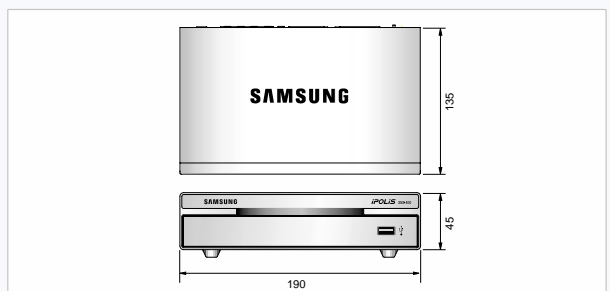
Specifications

Mode	SNS-400(N)	SNS-400(P)	SNS-100(N)	SNS-100(P)
Power Source	12V DC 1.5A			
Hardware OS	Embedded Linux			
Compression Method	MPEG-4 / JPEG selectable video compression, ADPCM audio compression			
Video Channel	4 Input / 1 output through BNC		1 Input / 1 output through BNC	
Compression /	Video : Max.	Video : Max.	Video : Max.	Video : Max.
Transmission Speed	CIF 120fps	CIF 100fps	VGA 30fps	VGA 25fps
Image Quality Control	5 levels			
Audio Input / Output	4 / 1		1 / 1	
Motion Detection	4 Channel motion detection seperately		1 Channel motion detection seperately	
Serial Connector	RS-232C, RS-485/422			
Transmission Interface	Ethernet (TCP/IP)			
Internet Browser	Windows internet explorer 5.5 or higher			
Resolution	704 x 480	704 x 576	704 x 480	704 x 576
	704 x 240	704 x 288	704 x 240	704 x 288
	352 x 240	352 x 288	352 x 240	352 x 288
Security	Password (User authentication), Control message encryption			
USB Port	USB 2.0 (Storing event images)			
DIO Supports	4 Sensor input, 4 Alarm output		2 Sensor input, 2 Alarm output	
Pan / Tilt / Zoom Control	Support (RS-232C, RS-485/422)			
User Connection	20 Users			
Protocol Supported	TCP/IP, DHCP, HTTP, SMTP, FTP, DDNS, PPPoE, NTP			
Misc. Function	Event / Alarm, FTP / E-mail notification			
Network Interface	10/100 Base-T ethernet using RJ-45, Static / Dynamic IP support			
Viewer Application	Network management software / Web viewer			
DDNS	Support (xDSL, DHCP, Cable modem, etc)			
SDK	3rd Party SDK support			
Operating Temperature	0°C ~ 40°C			
Dimensions	190(W) x 45(H) x 135(D)mm			
Weight	850g		770g	

Rear Panel



Dimensions



iPOLiS



The **Eco mark** represents Samsung Techwin's will to create environment-friendly products, and indicates that the product satisfies the EU RoHS Directive.

Design and specifications are subject to change without notice.



SAMSUNG TECHWIN CO., LTD.

145-3, Sangdaewon 1-dong, Jungwon-gu, Seongnam-si, Gyeonggi-do Korea 462-703
Tel : +82-31-740-8151 ~ 8 Fax : +82-31-740-8145
www.samsungipolis.com

SAMSUNG OPTO-ELECTRONICS AMERICA, LTD.

1480 Charles Willard St. Carson, CA 90746
Tel : +1-310-632-1234 Fax : +1-310-632-2195

SAMSUNG OPTO-ELECTRONICS UK, LTD.

Samsung House, 1000 Hillswood Drive,
Hillswood Business Park Chertsey, Surrey KT16 0PS
Tel : +44-1932-455312 Fax : +44-1932-455325

TIANJIN SAMSUNG OPTO-ELECTRONICS CO., LTD.

7 Pingchang Rd., Nankai Dist. Tianjin 300190, P.R China
Tel : +86-22-2761-4724(33821) Fax : +86-22-2761-6514

■ DISTRIBUTED BY



I.D-0805