

Top-end IR Thermographic Camera

Improved on the most advanced IR package available now, integrating multiple technologies never used in the industry, ThermoPro™ TP8 & TP8S are another ingenious solution Guide Infrared provides for professional IR thermographers around the world. In a rugged, compact and durable magnalium casing, ThermoPro™ TP8 & TP8S offer a wide assortment of unexpected features that enable thermographers to work with unprecedented efficiency and productivity. Exceeding all the existing IR radiometric cameras, it sets another new standard of the first-class products for the whole industry.

Features and Benefits



Touch Screen

Operating it easily and do complicated analyses

Infra Fusion

helping you identify where the problem exactly is



Auto Focus

Helping new users to be productive sooner

High-performance detector

Offering extraordinary high image presentation



Rugged Design

Magnalium housing is more robust and shock-resistant



Applications

- Predictive and preventative maintenance
- Electrical inspection
- Building diagnostics
- Technical diagnostics
- Veterinarian helper
- Portable law enforcement



Specifications

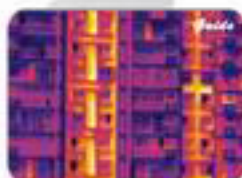
TP8

TP8S

Imaging Performance		
Detector Type	Focal plane array (FPA) uncooled microbolometer, 384 × 288 pixels, 25 μm	
Spectral Range	8 - 14 μm	
Field of View(FOV) Version A	Standard lens 21.7° × 16.4° /25mm Optional wide-angle lens 44.3° × 33.9° /11.8mm Optional tele lens 7.8° × 5.9° /70mm	
Field of View(FOV) Version B	Standard lens 15.6° × 11.7° /35mm Optional wide-angle lens 33.4° × 25.4° /16mm Optional tele lens 5.5° × 4.1° /100mm	
Thermal Sensitivity	<0.08°C at 30°C	
Image Presentation		
External Display	3.5" high resolution color VGA LCD, 640 × 480 pixels	
Image Display	Thermal image alone/ Visual image alone/ Picture in picture/IR Fusion	
Measurement		
Temperature Range	-20°C - +800°C (up to +2000°C optional)	-20°C - +600°C (up to +2000°C optional)
Accuracy	±2° or ±2% of reading;	
Measurement Modes	Auto hot/cold spot , auto alarm for temperature above or below ; spots, areas displaying either max, min, or average, vertical & horizontal line profile, delta-t, histogram & isotherm in live/zoomed/frozen/saved image & video	
Image Storage		
Type	Removable 2GB SD card or built-in flash memory	
Voice Annotation	Up to 60 seconds per file	
Laser Locator		
Classification Type	Class 2 semiconductor laser	
Power System		
Battery Type	Rechargeable Li-ion Camcorder battery, field-replaceable	
Battery Operating Time	Over 2.5 hours continuous operation	
Environmental Specification		
Operating Temperature	-20°C~+60°C	
Storage Temperature	-20°C~+60°C	
Encapsulation	IP54	
Interfaces		
USB 2.0	Image and real-time video transfer to PC; Real-time control of the camera on PC;	Image transfer to PC
RS232 Communication	Control of the camera on PC	Control of the camera on PC
Physical Characteristics		
Weight	1.1kg (including battery & LCD)	
Size	186mm × 106mm × 83mm (standard model)	



Inspect electricity hot point



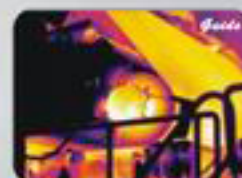
Inspect building structure



Monitoring and analysis heat distribution



Measure animal temperature



Evaluate equipment operating