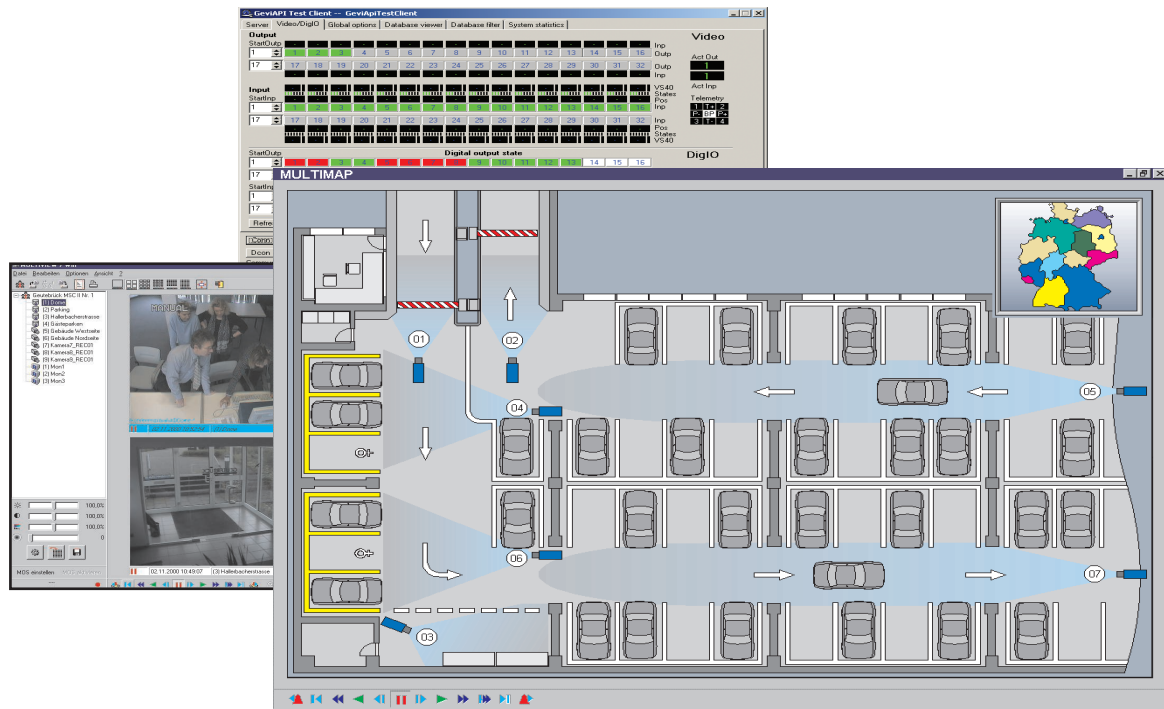


# MultiMap

Individually designed graphical user interface



## Product information

When it comes to user-friendly operation of GEUTEBRÜCK systems, the MultiMap user interface is the software of choice. MultiMap permits user-specific programming. Its carefully planned operating scheme permits optimised user guidance at the same time as ideal visual display of alarm situations. Typically, the display utilises digitally processed maps of grounds or of rooms, into which graphical operating elements have been placed at the programming stage.

- | Optimised control of GeViControl (GeViSoft) matrix systems, MultiScope III and GeViScope systems (via GeViSoft)
- | Intuitive operation through customisable graphical user interfaces
- | Increased operating efficiency and reduced training times
- | Operators are able to focus on important informations easily

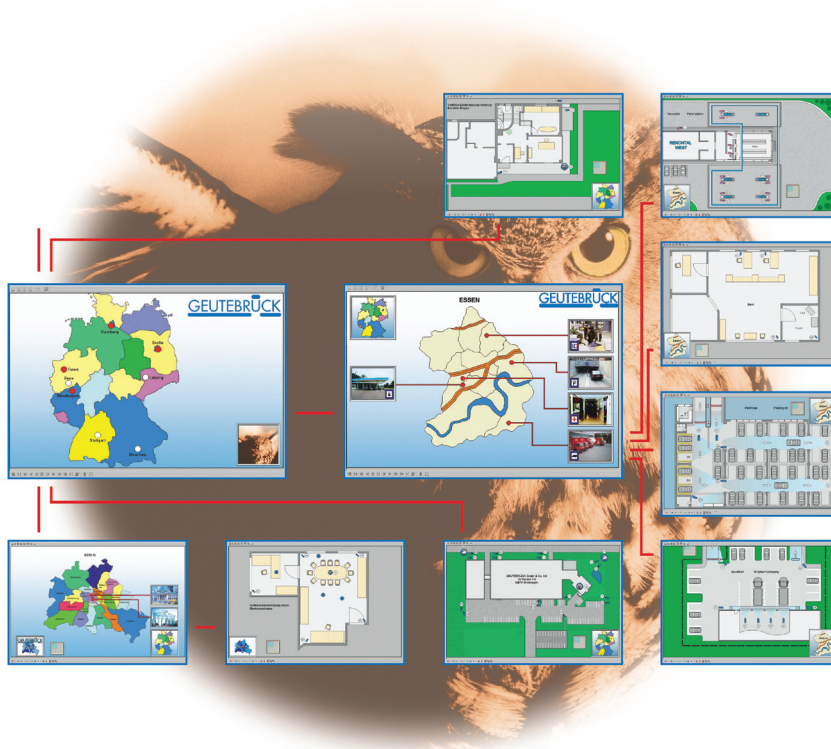
# Technical data

MultiMap forms the graphical user interface between MultiScope and operators. It uses floor plans/drawings in BMP format as background on which graphical symbols are placed to e.g select a camera, control MultiView or to change in other floorplans. All MultiView operational functions can be used.

MultiMap controls through one or more related floor plans a multitude of MultiView windows. These can be used as a „virtual monitor wall“ if set to the special MRI mode. This gives an immediate camera system overview also for the less experienced

operator and allows a intuitive use of the system.

Integrated in the GUI is also the control of remote cameras. Picture search menus, filters and event lists for individual cameras represent powerful evaluation tools and finally data back up can be started through MultiMap.



MultiMap\_7.75321\_PL\_EN 13.06.2008

Technical alterations reserved

**GEUTEBRÜCK GmbH**

Im Nassen 7-9 | D-53578 Windhagen | Tel. +49 (0)2645 137-0 | Fax-999 E-mail: info@geutebrueck.com | Web: [www.geutebrueck.de](http://www.geutebrueck.de)