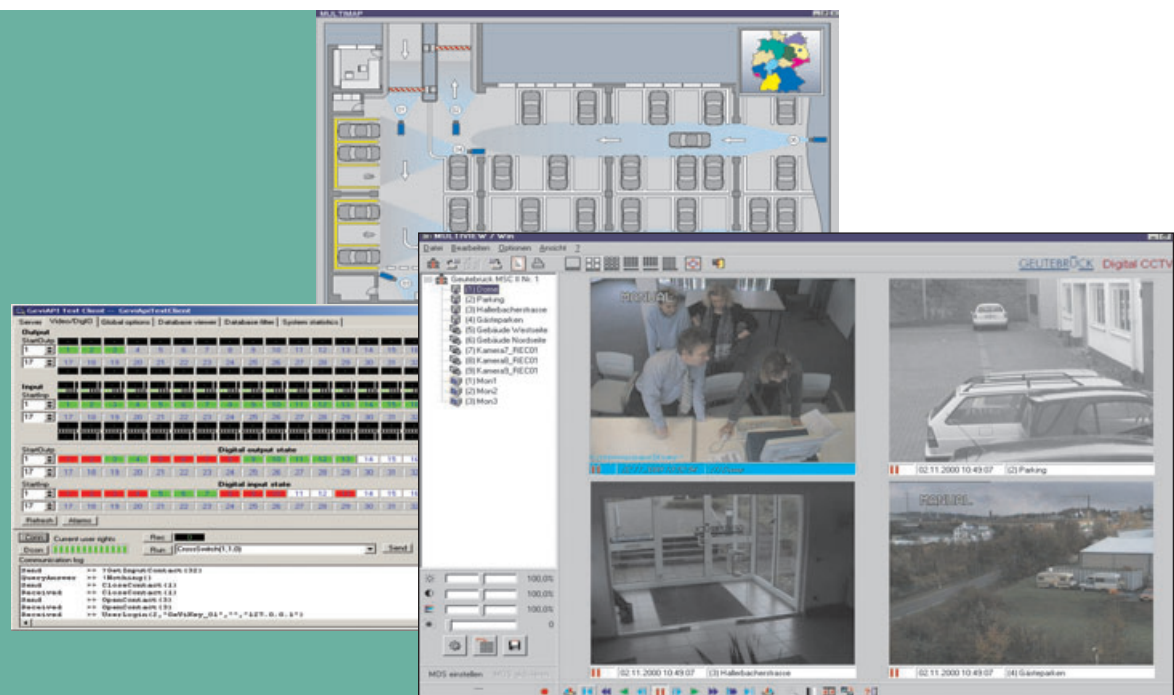


Video management with system

Product information



The intelligent video management system from GEUTEBRÜCK. GeViSoft offers something not seen before – a TCP/IP-based integration of video matrices, digital CCTV, telemetry, analogue and serial interfaces, along with optional facilities for passing data to and from external systems. Optimally tailored to meet the tightest security requirements, and ideally capable of transparently representing complex security architectures. With GeViSoft you have even large installations and building complexes under control.

- Transparent graphical interface in complex security architectures
- Information only presented when relevant
- Connection of sub-systems via open interfaces
- Centrally controlled, networked digital picture recording and remote control
- Networked video matrix control with video routing
- Central administration and setup of all system resources



Technical Data

GeViSoft is a management system software for comprehensive control of complex security and CCTV surveillance systems. Analogue and digital, network based CCTV components are operated via a user friendly GUI (graphical user interface) as a “single window application”.

GeViSoft targets the following applications:

- Security and surveillance systems
- Facility management systems
- Home & Building control systems

In large CCTV surveillance systems only a few camera inputs at a time are displayed on the control monitors. Most of the time, most of the cameras are left unwatched by the operator. The CCTV management system must provide intelligent information filtering to focus the user’s attention to relevant events and procedures, instead of presenting numerable monitors and other indicators.

GeViSoft allows manual camera-to-monitor switching or automatically presents camera pictures on specified monitors or monitor groups at an event. This way the system provides information only when the user’s attention and intervention is needed. Staff workload is reduced from making decisions needed to control the security system. Instead, at an alarm the system consequently reacts to handle the alarm in the correct way, independent of the operator.

The management software controls all functions for monitor switching – during alarms and in standard situations e.g.:

- Automatic camera cycles
- Remote control of cameras (PTZ)
- Supervision of all camera signals (sync signal and video signal monitoring) etc.

The reaction of GeViSoft during an alarm is programmable to a large variety of customized reactions. The following list is only a short extract of the possibilities:

- Switch camera inputs to free monitor outputs
- Queue the alarm inputs if there are alarms still pending
- Give sound signal or switch a digital output in case of a particular alarm (type)
- Store camera pictures to the digital video recorder MultiScope II
- Log activities which must be acknowledged by the operator within a certain timeframe with time/date information
- Search stored pictures by event kind etc.

GeViSoft is based on a modern client-server architecture using TCP/IP communication throughout the complete software design. It is independent of the hardware transmission layer and perfectly fits into network based applications, LAN and/or WAN.

Technical alterations reserved