

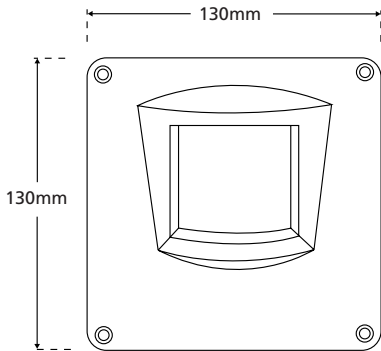


DISCREET CAMERA

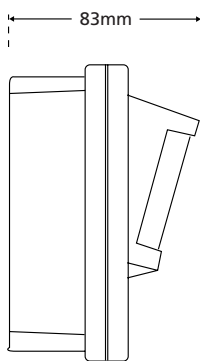
MONOCHROME

PI-310VR

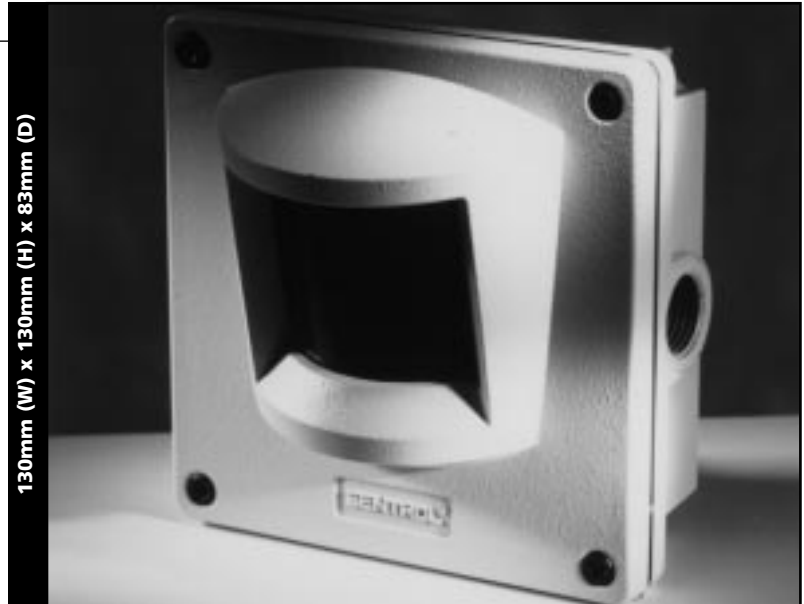
- Outdoor vandal-resistant monochrome PIR case camera



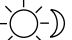



Front view



Side view



-  1/3" CCD
-  380 TV lines
-  0.3 lux sensitivity
-  Supply voltage: 12 Vdc

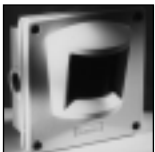
Lens options

Lens	Product Code
4.0mm	PI-310VR
2.5mm	PI-310VR/2.5
6.0mm	PI-310VR/6.0
8.0mm	PI-310VR/8.0
12.0mm	PI-310VR/12.0

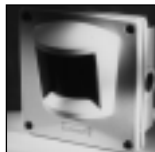
All lens options are the same price

- Superb picture quality
- Heavy-duty, powder-coated, die-cast aluminium housing with smoked polycarbonate viewing window
- Comes with free optional clear viewing window
- Multi-directional wall/corner-mount bracket available - product code: PI-X10VR/B
- Screw-entry conduit point for vandal-resistant cabling
- Camera module mounted manually adjustable 'swivel and tilt' cradle for exact camera positioning.

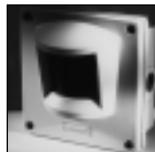
See Also:



PI-310VR/AI
Auto-iris option



PI-610VR
Colour option



PI-510VR
High resolution
option

VIDEO

SPECIFICATION	MOD-308 camera module
Image sensor	1/3" CCD sensor, 512 (H) x 582 (V) pixels
Horizontal resolution	380 TV lines or greater
Lens options	SEE TABLE
Electronic shutter	Automatic linear shutter
Sensitivity	0.3 lux
Video output	CCIR, 1Vp-p, 75 Ohms
Supply voltage	12 Vdc \pm 10%
Working temperature	-18°C to +60°C

Specification and availability of products are subject to change without notice