

2/W COLOUR DUOX VIDEO VEO-XS KIT



Reference: 9432

Now with Photocaller, the new DUOX function. It captures up to 150 images of visitors, indicating the date and time.

FERMAX is presenting its **new VEO-XS Kits** for single family homes, offices and b...

DESCRIPTION

Now with Photocaller, the new DUOX function. It captures up to 150 images of visitors, indicating the date and time.

FERMAX is presenting its **new VEO-XS Kits** for single family homes, offices and businesses.

These Kits include the new **VEO-XS monitor**.

The VEO-XS kits include all the necessary materials for a complete installation: Cityline panel, a safe choice, resulting from combining a classic aesthetic, robustness and reliability; the VEO-XS monitor and power supply.

TECHNICAL SPECIFICATIONS

Includes:

- 70008 City Panel DUOX Colour S1. S1 130x128
- 8948 Flush box. S1: 115x114x45
- 9408 VEO-XS DUOX Colour Monitor (2 uds)
- 9407 VEO-XS DUOX monitor connector (2 uds)
- 4810 Power Supply DIN10 230Vac/12Vac 18Vdc/1.5A
- 3244 DUOX filter

Video

- Resolution: QVGA(320x240 pixels).
- Sensor: 1/3" color CMOS.
- Effective pixels: 1M.
- Minimum external illumination: 0,5 lux.
- SNR >40dB.
- Frame rate 25 fps.
- Auto iris.
- Auto BLC.
- View angle 90° H, 72°V.
- Color night vision through white led.

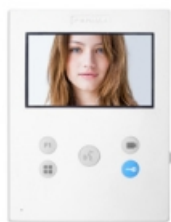
Weight: 2,6252546 kg

Size of product when packed: 22x20x14 cm



EAN 13: 8,4243E+12

Included products



COLOUR DUOX VEO-XS MONITOR 4,3"

Ref: 9408

Hands-free VEO-XS monitor. Characterised by its small size and extra-flat thickness. Thanks to its OSD menu and the layout of the buttons, interaction...

[+ INFO](#)



CITY PANEL DUOX S1 CP 201 COLOUR

Ref: 70008

New Cityline Panel: CityLine is the "continuous profile" outdoor panel line for buildings. This new panel model is more robust, more luxurious and...

[+ INFO](#)

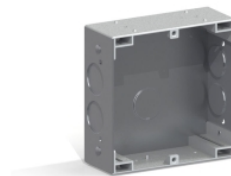


DUOX VEO-XS MONITOR CONNECTOR

Ref: 9407

Installation's connector. For VEO-XS monitors. For DUOX technology.

[+ INFO](#)



CITY FLUSH BOX FOR KIT (S1)

Ref: 8948

In order to install a panel it is necessary to place a box in the wall where we will subsequently fix the panel. The flushboxes are manufactured in...

[+ INFO](#)



P.S.U. DIN10 230VAC/12VAC+18VDC- 1.5A

Ref: 4810

Used to power the different equipment in a Fermax installation.

Constructed in self-extinguishing VO material. Includes a set of covers to protect the...

[+ INFO](#)



DUOX FILTER

Ref: 3244

DIN-4 rail format for easy installation inside an electrical equipment box, or can be screwed directly onto the wall.

[+ INFO](#)

