

EX27 Series

The EX27 integrated camera is an all-weather system that includes all of the best features of a plug and play camera without compromise to CCD optics and lens quality. Full size lenses with varifocal auto-iris features are integrated as standard equipment to ensure that you get the picture under extreme outdoor lighting conditions.

The EX27 is rugged, compact, power protected, weather protected, easily installed and industrial designed. This integrated design sets a new benchmark for the all-in-one surveillance camera.

The EX27 is available with several CCD options including Quattro for color/mono/infrared switching:

- EX27S3** - Monochrome with 420 line - 1/3" CCD
- EX27S7** - Extended IR with 600 line - 1/2" CCD
- EX27C3** - Color with 350 line - 1/3" CCD
- EX27C7** - Color with 480 line Sony 1/3" CCD
- EX27Q3** - Quattro Color/Mono with 350 line 1/3" CCD
- EX27Q7** - Quattro Color/Mono with 480 Line 1/3" CCD

Applications:

- *Extreme outdoor for rugged, effective all-weather CCTV surveillance*
- *Outdoor Night-Time Surveillance*
- *Versatile Quick-Installation CCTV*
- *Hi-Performance Model (EX27S.700) for Covert Video Surveillance*
- *Architectural projects requiring compact, non-obtrusive high performance cameras*

Features:

- *Cast & extruded aluminum*
- *Glass window*
- *Variety of high performance CCD's available*
- *Voltage regulation /Power protection*
- *Input power in 12 – 24 volts AC or DC*
- *Easy access for lens adjustments.*
- *Universal mounting bracket included.*



Above: The EX27 Series cameras are all equipped with auto-iris varifocal lenses. Shown above with the optional bracket EXMB.023, the industrial-designed EX27 camera is available in standard monochrome, color and Quattro models. All models are based on latest generation Sony sensors.



Left:
An EX27S7-VA612 is equipped with an S700 high performance infrared sensor and a varifocal auto-iris lens. When matched with a UF500 infrared illuminator, night time surveillance beyond 250 feet (80 meters) can be expected in total darkness.



Below Left:
An EX27Q3-VA358 Quattro camera is integrated with twin UF100 infrared illuminators to provide color by day and infrared supported monochrome video surveillance at night.

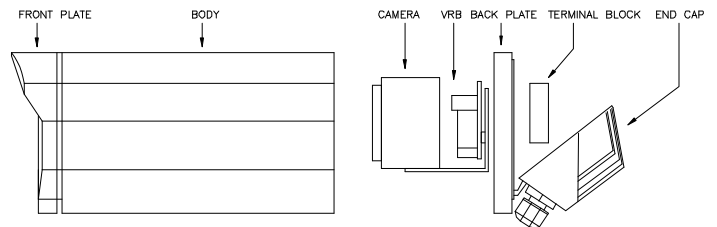
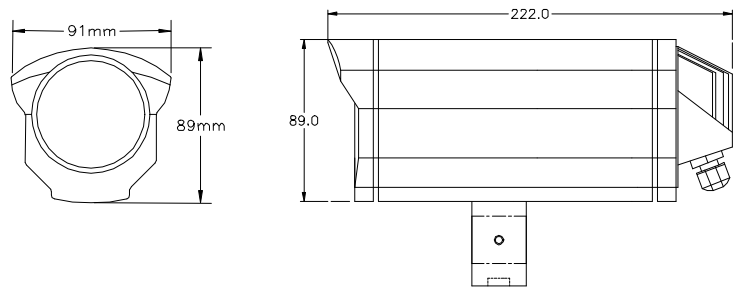
Dealer / Distributor :

Global HQ: www.ExtremeCCTV.com

USA / Canada: 4060 McConnell Drive, Burnaby, BC Canada V5A 3A8
Toll Free N.A. 888-409-2288 Tel. +1.604.420.7711 Fax +1.604.420.3300

EX27 - General Specifications

CCD Cameras	Various Models – See Part Numbers S300, S700, C300, C700, Q300, Q700
Consumption	3 W max. for color / Quattro models 2 W max. for mono models
Voltage	12 VDC or 24 VAC selectable
Construction	Robust aluminum casting / extrusion Gasketed/Sealed to IP66 / NEMA4
Weight	1.4 kg (3.1 lbs)
Color	Black (other colors by special order)
Mount	Double U-Mount Supplied with ¼-20
Wall Bracket	Optional – see below
Cabling	1.6 m (5 feet) of Belden Multi-Pair



Part Numbers:

Special Order – EX27 Cameras Without Lenses

EX27S.300cs	Mono, 1/3" Sony CCD 420 TVL Optimized IR
EX27S.700cs	Mono, 1/2" Sony CCD 600 TVL Extended IR
EX27C.300cs	Color 1/3" Sony CCD 350 TVL, BLC
EX27C.700cs	Color 1/3" Sony CCD 480 TVL, BLC
EX27Q.300cs	Quattro – Color/Mono/IR Sensing/ PC - 350 TVL
EX27Q.700cs	Quattro – Color/Mono/IR Sensing/ PC - 480 TVL

Monochrome Infrared Cameras with Auto-Iris Varifocal Lenses

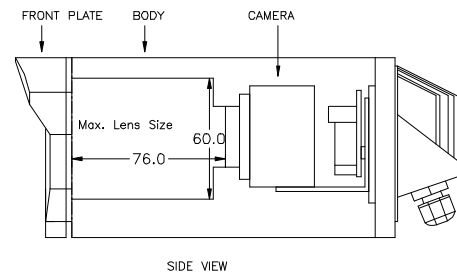
EX27S3-VA358	Mono, S300, 420 TVL, cs-Varifocal AI, 3.5 – 8 mm
EX27S3-VA612	Mono, S300, 420 TVL, cs-Varifocal AI, 6 – 12 mm
EX27S7-VA612	Mono, S700, 600 TVL, cs-Varifocal AI, 6 – 12 mm

Color Cameras with Auto-Iris Varifocal Lenses

EX27C3-VA358	Color, C300, 350 TVL, cs-Varifocal AI, 3.5 – 8 mm
EX27C3-VA612	Color, C300, 350 TVL, cs-Varifocal AI, 6 – 12 mm
EX27C7-VA358	Color, C700, 480 TVL, cs-Varifocal AI, 3.5 – 8 mm
EX27C7-VA612	Color, C700, 480 TVL, cs-Varifocal AI, 6 – 12 mm

Quattro- Color-Infrared Cameras with Auto-Iris Varifocal Lenses

EX27Q3-VA358	QUATTRO, Q300, 350 TVL, cs-Varifocal AI, 3.5 – 8 mm
EX27Q3-VA612	QUATTRO, Q300, 350 TVL, cs-Varifocal AI, 6 – 12 mm
EX27Q7-VA358	QUATTRO, Q700, 480 TVL, cs-Varifocal AI, 3.5 – 8 mm
EX27Q7-VA612	QUATTRO, Q700, 480 TVL, cs-Varifocal AI, 6 – 12 mm



Optional Items:

EXPS.002	Power Supply, 12 VDC, 500 mA, w/ 2.1 mm plug
EXMB.001	Wall Bracket, structural aluminum, w/ Heavy Duty P/T Head
EXMB.020	L-Bracket, Heavy Duty (no P/T head)
EXMB.023	Wall Bracket, die-cast (no P/T head)
EXMB.025	Wall Bracket, die-cast aluminum, w/ Std Mount P/T Head
EXMB.026	Wall Bracket, die-cast aluminum, w/ Heavy Duty P/T Head
EXMB.011	Twin Unit Adaptor (T-Bar)

Dealer / Distributor :

Global HQ: www.ExtremeCCTV.com
USA / Canada: 4060 McConnell Drive, Burnaby, BC Canada V5A 3A8
Toll Free N.A. 888-409-2288 Tel. +1.604.420.7711 Fax +1.604.420.3300