

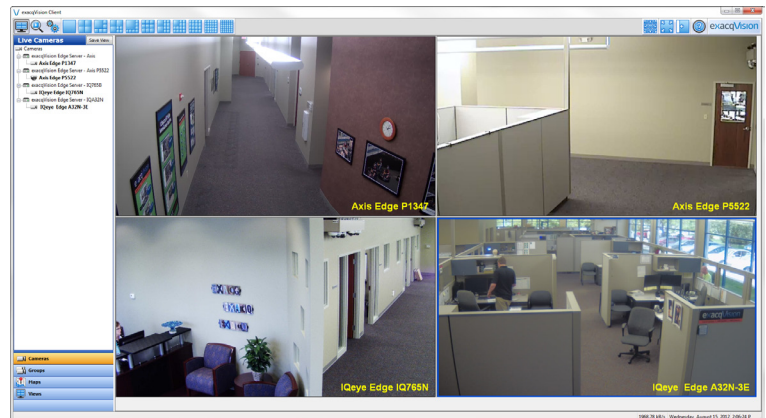


VMS Server on an IP Camera

Full-Featured Video Management System (VMS) Software for Standalone and Distributed Enterprise Applications

Key Features & Benefits:

- **VMS Software Runs on Edge Device** — VMS runs directly on an IP camera or encoder without the need for a separate, central server; loads onto any compatible IP camera through the camera's web page app loader
- **Cross Platform Client Software** — Access camera/server via included exacqVision client software which runs freely on Windows, Linux or Macintosh
- **Fully-Functional VMS** — The full functionality and performance of exacqVision Pro and exacqVision Enterprise is available on a single IP camera running the exacqVision edge VMS application. Includes Active Directory integration, Video Wall, Mapping, Digital PTZ, third-party integration and more.
- **Easily Add to Existing exacqVision Installations** — Add any number of additional cameras to existing exacqVision systems without the need for separate servers; scalable with all exacqVision systems
- **Ideal for Distributed Locations** — Use in distributed, smaller deployments that require only a few cameras, such as utility buildings, branch offices, and quick-serve restaurants
- **Use with Wireless Cameras** — Guarantees recording in wireless IP camera deployments where network connectivity is less reliable
- **Pre-Configured Camera/Server** — Install exacqVision edge to a supported IP camera and send a complete VMS solution to the end-user.
- **Simple Storage on the Camera** — Records to the IP cameras on-board SD memory card or NAS storage unit
- **Mobile App Ready** — exacqVision edge live and recorded video can be accessed via the free exacq Mobile app for iPhone, iPad, Android, Kindle Fire and Blackberry Playbook.



Features	exacqVision [®] edge
Server OS Compatibility	Camera OS
Bandwidth Throttling	Yes
Soft Triggers	Yes
3rd Party Integrations	Yes
Installs to IP Edge Device	Yes
Software Updates Included	1 Year
Scalable with entire exacqVision VMS line	Yes
Compatible in Enterprise Environment	Yes
Health Monitoring	Yes
Enterprise Server Monitoring	Yes
Enterprise User Setup	Yes
LDAP / Active Directory Support	Yes
Enterprise Camera Setup	Yes
Audit Trail	Yes
Custom User Groups	Yes
Pre-Post Alarm Recording	Yes
Video Expiration	Min/Max retention by camera
iSCSI Support	Camera OS Dependent
NAS Support	Camera OS Dependent
Continuous Recording During Network Failure	Yes
Smart Search	Yes
exacqReply Instant Replay	Yes
DVD Export (client)	Yes
POS & ATM Serial Text Search	Yes
Event Search	Yes
Thumbnail & Graphic Search Display	Yes
Simultaneous Video Export	Yes
Time-Lapse Recording	Yes
Panoramic Lens Support	Camera Dependent
exacqVision Surveillance Keyboard support	Yes
3rd Party Client Joystick Configuration	Yes
PTZ Control & Presets	Yes
Digital PTZ Control & Presets (live and recorded video)	Yes
Multi-Monitor & Video Wall	Yes
Event Linking	Yes
Event-Driven Video Switching	Yes
Camera Groups	Yes
Event Notification	Yes
Mapping	Multi-layer
Multi-Camera Playback (client)	Yes
Free Client Software	Windows/Linux/Mac
Supported Browsers	IE, Chrome, Safari, Opera, Firefox



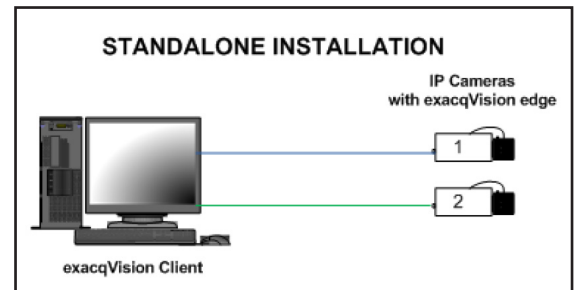
COMPATIBLE MODELS:

M5013	P5522-E
M5014	P5532-E
P1346	P5534-E
P1346-E	Q1602
P1347	Q1602-E
P1347-E	Q1604
P3346	Q1604-E
P3346-V	Q1755
P3346-VE	Q1755-E
P3367-V	Q6032
P3367-VE	Q6034-E
P5512	Q6035
P5512-E	Q6035-E
P5522	



COMPATIBLE MODELS:

IQA30	IQ761
IQA31	IQ762
IQA32	IQ763
IQA33	IQ765
IQA35	



SD Card Requirements



An SDHC class 10 or better SD memory card, purchased separately, is required for each camera. Up to 2GB is reserved for exacqVision edge operations and cannot be used for exacqVision edge data storage.

