



Cross Platform IP Video Surveillance Software and Systems

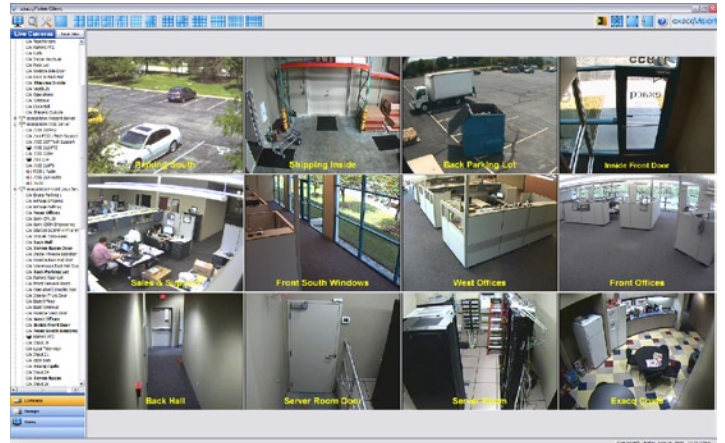
## Hybrid NVR Servers - 2U Rackmount

IP and Analog Cameras

16 or 32 Analog Inputs + 8 IP Inputs (expandable to 64)  
Up to 6TB Storage per server



The exacqVision® Hybrid NVR (Network Video Recorder) Server provides seamless integration and recording of both analog and IP video surveillance cameras. The exacqVision VMS (Video Management System) server software (Standard or Enterprise) is pre-installed on either a Windows or Linux operating system. The powerful, yet easy to operate client user interface installs on any standard computer running Windows, Linux or Mac OS X and can connect to an unlimited number of exacqVision Hybrid and IP camera servers creating a virtually unlimited amount of cameras and protection.



### Features exacqVision 2U Rackmount Hybrid NVR Servers & VMS Software

#### Flexible Scalability

- Up to 96 cameras (32 analog + 64 network) per server. Included 8 IP licenses.
- Simple and cost-effective to add additional IP camera licenses.
- Common client simultaneously connects to unlimited exacqVision servers to create scalable network.
- Standard and Enterprise VMS server software.

#### Powerful Integration

- Supports latest IP camera technology including multi-megapixel cameras, H.264, analytics.
- Integration with access control systems, iSCSI storage and loss prevention systems.

#### True Hybrid

- Seamless integration of analog and IP cameras on a single server
- Supports analog and IP PTZ cameras.
- Digital PTZ functionality on all cameras (analog and IP) in live and recorded mode.

#### Intuitive exacqVision Software

- Requires little to no training
- Multi-monitor client display. Drag and drop cameras between monitors.
- Graphical search display for all cameras and recorded audio.
- Multi-camera playback and export
- Powerful video and audio export features.

#### Mobile Access

- Access video with web browsers and mobile devices with internet access.

#### Cross Platform

- Server software runs on Windows or Linux
- Client software freely available for Windows, Linux and Macintosh



IP Camera Integration	ACTI	Arecont Vision	AXIS COMMUNICATIONS	BASLER	Canon	CBC AMERICA Corp.	D-Link	Honeywell
	ioimage	ipxc	IQinvision	Panasonic	StarDot Technologies	SONY	speco Technologies	VIVOTEK
Access Control Integration	MAXESS	KEYSCAN	cardax	LENEL	PSCC	ICT Technologies	S2 SECURITY	

The latest Network Camera Integration Partner list with model numbers is available at [www.exacq.com/ipcameras.html](http://www.exacq.com/ipcameras.html)



### Hybrid NVR - 16 Analog Inputs / Up to 64 IP Inputs

Model #	Analog Inputs	IPS	Looping Outputs	Analog Outputs	IP Licenses	HD Capacity
1608-12-0320-R2	16	120	16	1 mux / 1 spot	8 (Up to 64)	320 GB
1608-12-0500-R2	16	120	16	1 mux / 1 spot	8 (Up to 64)	500 GB
1608-12-1000-R2	16	120	16	1 mux / 1 spot	8 (Up to 64)	1000 GB
1608-12-2000-R2	16	120	16	1 mux / 1 spot	8 (Up to 64)	2000 GB
1608-12-3000-R2	16	120	16	1 mux / 1 spot	8 (Up to 64)	3000 GB
1608-12-4000-R2	16	120	16	1 mux / 1 spot	8 (Up to 64)	4000 GB
1608-12-6000-R2	16	120	16	1 mux / 1 spot	8 (Up to 64)	6000 GB
1608-12-0320-R2	16	480	16	1 mux / 1 spot	8 (Up to 64)	320 GB
1608-48-0500-R2	16	480	16	1 mux / 1 spot	8 (Up to 64)	500 GB
1608-48-1000-R2	16	480	16	1 mux / 1 spot	8 (Up to 64)	1000 GB
1608-48-2000-R2	16	480	16	1 mux / 1 spot	8 (Up to 64)	2000 GB
1608-48-3000-R2	16	480	16	1 mux / 1 spot	8 (Up to 64)	3000 GB
1608-48-4000-R2	16	480	16	1 mux / 1 spot	8 (Up to 64)	4000 GB
1608-48-6000-R2	16	480	16	1 mux / 1 spot	8 (Up to 64)	6000 GB

### Hybrid NVR - 32 Analog Inputs / Up to 64 IP Inputs

Model #	Analog Inputs	IPS	Looping Outputs	Analog Outputs	IP Licenses	HD Capacity
3208-24-0320-R2	32	240	0	2 mux / 2 spot	8 (Up to 64)	320 GB
3208-24-0500-R2	32	240	0	2 mux / 2 spot	8 (Up to 64)	500 GB
3208-24-1000-R2	32	240	0	2 mux / 2 spot	8 (Up to 64)	1000 GB
3208-24-2000-R2	32	240	0	2 mux / 2 spot	8 (Up to 64)	2000 GB
3208-24-3000-R2	32	240	0	2 mux / 2 spot	8 (Up to 64)	3000 GB
3208-24-4000-R2	32	240	0	2 mux / 2 spot	8 (Up to 64)	4000 GB
3208-24-6000-R2	32	240	0	2 mux / 2 spot	8 (Up to 64)	6000 GB
3208-96-3200-R2	32	960	0	2 mux / 2 spot	8 (Up to 64)	320 GB
3208-96-0500-R2	32	960	0	2 mux / 2 spot	8 (Up to 64)	500 GB
3208-96-1000-R2	32	960	0	2 mux / 2 spot	8 (Up to 64)	1000 GB
3208-96-2000-R2	32	960	0	2 mux / 2 spot	8 (Up to 64)	2000 GB
3208-96-3000-R2	32	960	0	2 mux / 2 spot	8 (Up to 64)	3000 GB
3208-96-4000-R2	32	960	0	2 mux / 2 spot	8 (Up to 64)	4000 GB
3208-96-6000-R2	32	960	0	2 mux / 2 spot	8 (Up to 64)	6000 GB

### SERVER SPECIFICATIONS

RECORDING RESOLUTION (ANALOG):	CIF: 352 x 240 NTSC / 352 x 288 PAL 2CIF: 720 x 240 NTSC / 720 x 288 PAL D1: 720 x 480 NTSC / 720 x 576 PAL
RECORDING RESOLUTION (IP):	Only limited to IP Camera Resolution
FRAME RATE IPS (ANALOG):	NTSC: 120, 240, 480, 960 PAL: 100, 200, 400, 800
COMPRESSION (ANALOG):	MPEG-4 ASP or MJPEG
COMPRESSION (IP):	H.264, MPEG-4, MJPEG
ALARM INPUTS:	16 TTL inputs - screw terminal
ALARM OUTPUTS:	15 TTL outputs and 1 relay output - screw terminal
VIDEO INPUTS (ANALOG):	16 or 32 BNC
ANALOG PTZ PROTOCOLS:	Pelco D/P, GE-Impac, GE-ASCII, Bosch, Panasonic
VIDEO INPUTS (IP):	Up to 64 per server
VIDEO OUTPUTS (ANALOG):	2 or 4 BNC
LOOPING OUTPUTS:	16 or 0 BNC
AUDIO INPUTS:	4 audio input - screw terminal + IP camera audio
SERIAL CONNECTIONS:	RS-485 PTZ port
NIC:	1Gbit 1000Base T RJ-45
USB2 PORTS:	8 (2 front, 6 rear)
HARD DRIVE STORAGE:	Enterprise Class (see exacqVision model numbers)
VGA OUTPUT:	1 VGA (DB15) or DVI-D
KEYBOARD & MOUSE:	Yes
DVD/CD RW:	Yes (front panel access)
WATCHDOG TIMER:	Yes
OPERATING SYSTEM:	Windows XP Pro, Windows Server 2003 or Linux
REGULATORY:	CE (Class A), FCC (Class A)
WARRANTY:	3 years, parts and labor
DIMENSIONS (LxWxH):	21.25 x 19.0 x 3.5 (2U) in. / 53.975 x 48.26 x 8.89 cm
WEIGHT:	28.7 - 32.1 lbs. / 13 - 14.6 kg
OPERATING TEMPERATURE:	40 - 90° F / 4.5 - 35° C
RELATIVE HUMIDITY:	5-95% RH (non-condensing)
INPUT VOLTAGE:	120 VAC
POWER CONSUMPTION:	< 250 watts (150 watts typical)

### CLIENT WORKSTATION

#### MINIMUM REQUIREMENTS

Full remote operation from most computers

OS:	Windows, Linux, Mac OS
PROCESSOR:	2 Ghz Celeron (min.)
MEMORY:	512 MB RAM
VGA:	Standard high performance

#### WEB BROWSER ACCESS

Access servers from online browser

COMPATIBILITY:	Internet Explorer
	Firefox
	Apple Safari
	Opera
	Google Chrome

#### MOBILE DEVICE ACCESS

Access video with mobile devices via mobile web browser

e.g.  
iPhone and iPod Touch  
BlackBerry  
Android

