

Video Security

Housings | eneo Economy Housings

VTL-WWA

Weatherproof Housing (300mm) with Heater
Thermostat, Wallbracket, RAL9002, 230VAC

Art-No. 79488



Features

Camera Weatherprotection
Integrated Wall Bracket
Fold-down Housing Body
Insulated Camera Mounting
Housing Body Length: 300mm

Cable Entry Through the Wall Bracket
230V Window Heater Included
Protection Rating: IP66
Varnished: RAL9002

Specifications

Housing length (L)	300mm
Cable entry	Though the wall bracket
Window heater	220-240V / 20watts with thermostat
Sunshield	Included
Protection rating	IP66
Housing	Aluminium
Colour	RAL9002
Dimensions (HxWxD)	See drawing
Weight	4.0kg

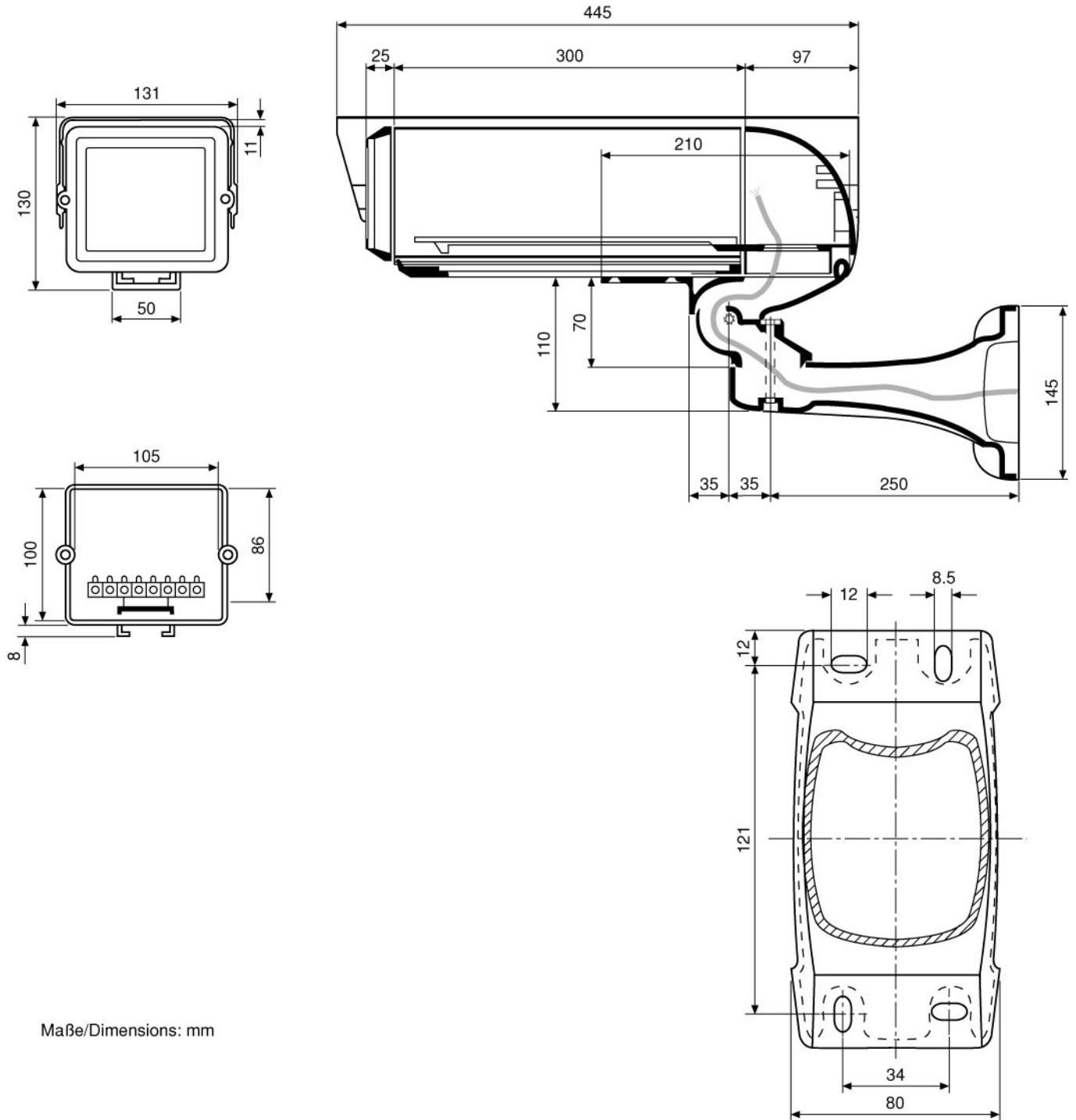
Accessories

79415 / NE-115	Power Supply Unit 230VAC/12VDC (400mA) for all VTL Housings, Regulated
79593 / PM-6D	Pole Mount Adapter for 2 Wall Mounts, (50-140mm Pole), RAL9002
79592 / PM-6S	Pole Mount Adapter for 1 Wall Mount, (50-140mm Pole), RAL9002
70457 / AK-3	Camera Connection box, 230VAC Input 24VAC-100W, 12VDC-1A Output

(Accessories continued)

79613 / CMA-2

Corner Mount Adapter for Wall Brackets WD-5, WD-7, VTL-WW, VHK-WW, RAL9002



Maße/Dimensions: mm

VIDEOR TECHNICAL E. Hartig GmbH
 Carl-Zeiss-Straße 8 · 63322 Rödermark · Germany
 Telefon +49 (0) 60 74/8 88-0 · Telefax +49 (0) 60 74/8 88-100
 info@videortechnical.com · www.videortechnical.com

