

VKCD-1324/IR

Home | Security | Dome Cameras | Fixed

VKCD-1324/IR

1/3" Dome, Fixed, Day&Night, clear, 2.8-10mm,

540TVL, IR Illumination, 24V

Art-Nr. 92169



Main Features

Digital Pixel System (DPS)

Wide Dynamic Range: 102dB, 120dB max.

Built-in Lens F1.2/2.8-10mm with DC Iris Control

Sensitivity of 1.7Lux (F1.2 / Colour)

Removable IR Cut Filter

Digital Noise Reduction (DNR)

Adjustable Low-Speed Shutter (DSS)

Automatic White Balance (ATW)

IR Illumination by 35 integral 850nm LEDs

Surface Mount / Clear Bubble

Weatherproof Camera / Protection Rating: IP66

Supply Voltage: 12VDC/24VAC

Specifications

| | |
|-----------------------------------|---|
| Video standard | PAL/NTSC |
| System | day&night |
| Sensor size | 1/3" |
| Imager | DPS (Pixim) |
| Active picture elements | 400,000, (H) 720 x (V) 540 (eff.) |
| Synchronization | Internal/Line-lock |
| Signal-to-noise ratio | 48dB (AGC OFF) |
| Sensitivity (at 50% video signal) | 1.4Lux (colour), 0.38Lux (B&W). Videor measurement result at F1.2 |
| Horizontal resolution | 540 TVL |
| Rotation range | 360° |
| Automatic gain control (AGC) | On/Off switchable |
| Low Speed Shutter | yes |
| Low speed shutter | 2 ~32 fps. |

VKCD-1324/IR

(Continuation Specifications)

| | |
|-------------------------------|---|
| Digital Noise Reduction (DNR) | yes, On/Off switchable |
| Flickerless function | On/Off switchable |
| White balance | Automatic and manual (ATW/AWB) |
| White balance (ATW) | 2000K ~8000K |
| Backlight compensation | BLC, WDR |
| Wide Dynamic Range (WDR) | yes |
| Backlight compensation | 4 presets: low/middle/high/custom (user adjustment) / BLC: Center area / upper 1/3, middle 1/3, lower 1/3 |
| Aperture Correction (APC) | Horizontal and vertical |
| IR cut filter | switchable |
| Video outputs | CVBS |
| Video output | 1 Vp-p, (C)VBS, 75ohms, BNC |
| Lens mount | integrated lens |
| Lens type | varifocal |
| Lens | F1.2 ~270/2.8 ~10mm with galvanometer driven iris, manual Zoom/Focus adjustment |
| Aspherical technology | yes |
| Focal length | 2,8 mm - 10 mm |
| Horizontal angle of view | 82° - 27° |
| Iris control | DC |
| MOD (Minimum object distance) | 0,1 m |
| Filter screw size | not available |
| Illumination | 35 LEDs 850nm. Integrated light sensor for On/Off switching of the illumination |
| Illumination range | approx. 35m (at a good light reflexion and 40% Videosignal) |
| OSD function control | Preset, Exposure, D&N, Picture Control, Lens Select (manual/DC), Mirror function (H+V), Synchronization, Shutter mode |
| Sharpness correction | selectable |
| Cable connection | Video (BNC), Power 12VDC or 24VAC (2-pin terminal) |
| Serial interfaces | no |
| Temperature range (Operation) | -10° ~+50°C |
| Heater | no |
| Protection rating | IP66 |
| Supply voltage | 12VDC, 24VAC, 10 ~30VDC, 15 ~29VAC |
| Power consumption | 10.0watts max. |
| Vandalism resistant | yes |
| Colour (bubble) | clear |
| Camera fixing | no |
| Mounting | wall mount, flush mount, surface mount |
| Housing | Outdoor |

VKCD-1324/IR

(Continuation Specifications)

| | |
|---------------------------|---|
| Housing material | Aluminium |
| Housing | Metal |
| Colour (housing) | Pantone Warm Gray 1C |
| Dimensions (HxWxD) | See drawing |
| Weight | approx. 1.0kg |
| Parts supplied | Mounting kit, Torx wrench key, Blind cover 3/4", Manual |
| Certificates | CE |

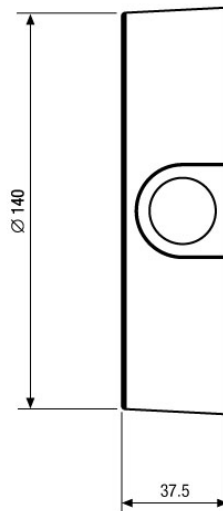
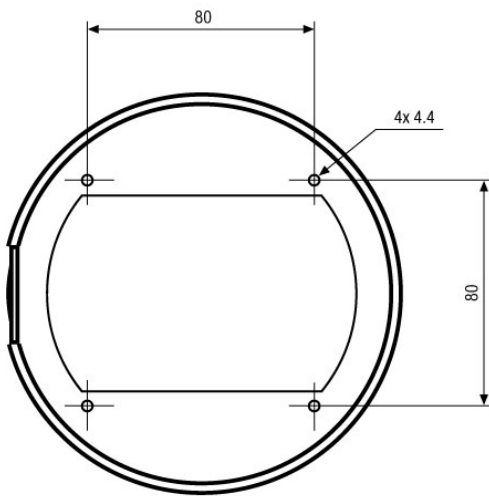
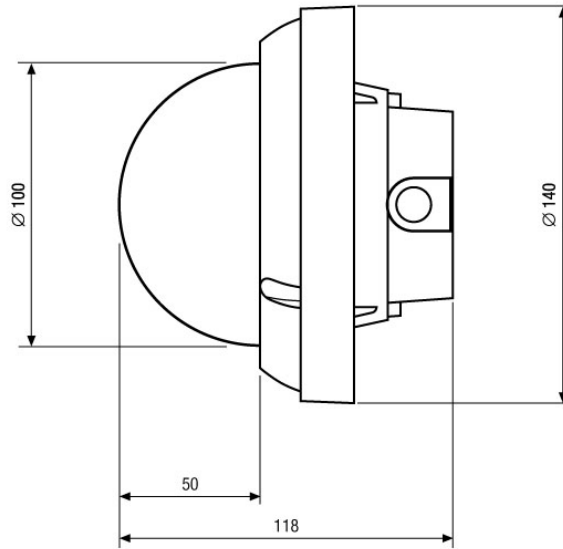
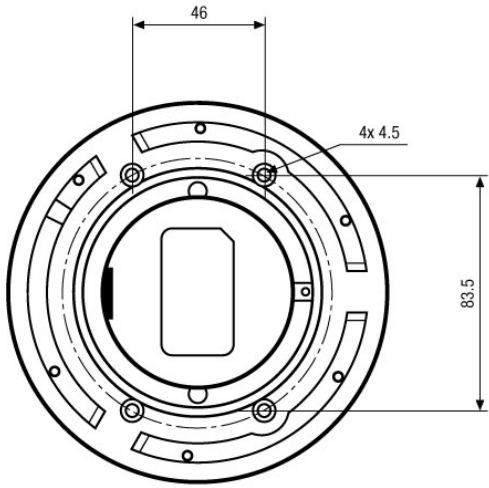
Optional accessories

| | | |
|--------------|------------------------|---|
| 70527 | NE-132/AC24V | Power Supply Unit 230VAC/24VAC (1.0A) |
| 70495 | VT-PS12DC-7 | Plugable PSU w. Cont. & UK Mains plug-in 100-240VAC/12VDC-1.25A, Regulated |
| 92168 | IRCAM/WB2 | Wall Mount Kit for VKCD-1322 and VKCD-1324/IR |
| 77773 | VT-PS12DCDT1 | PSU 12VDC/1.0A, Regulated, Desktop Version, 1.8m Cables each w. open ends |
| 92209 | IRCAM/CB1 | Ceiling Mount Kit for VKCD-1322 and VKC-1324/IR |
| 92389 | VKCD-1324/IR-MC | Spot Monitor Cable for VKCD-1324/IR |
| 88149 | 3/4" - M25X1.5 | Thread Adapter 3/4" - Conduit Connection M25x1.5mm for Dome Surface Mount Housing |

VKCD-1324/IR

Home | Security | Dome Cameras | Fixed

Technical drawing



Maße/Dimensions: mm