

Video Security

Dome Cameras | eneo Vandalism-Proof Fix Domes

VKCD-1313FM/MF

1/3" Colour Dome Camera, In-ceiling Mount with 3.8mm Lens, 12VDC, 550TVL

Art-No. 92053



Features

For Wall and In-ceiling Mount
Vandal and Tamper-Resistant
Tinted Lexan Bubble, 100mm
1/3" Colour Board Camera with Super HAD CCD
Integrated Lens F2.0/3.8mm
Resolution of 550 Horizontal Lines

Digital Signal Processing (DSP)
Back Light Compensation (BLC)
Automatic White Balance (ATW)
Manual 3-axis Camera Adjustment
For Easy Indoor and Outdoor Installation (IP65)

Specifications

Video standard	PAL
System	Colour
Sensor size	1/3"
Imager	CCD, Sony Super HAD Interline Transfer CCD
Active picture elements	approx. 440,000, 752(H) x 582(V)
Synchronization	Internal
Signal-to-noise ratio	48dB
Sensitivity (at 50% video signal)	0,35Lux, at F1.2 (VT measurement result including bubble)
Horizontal resolution	550TVL
Rotation range	manual: 360°
Automatic gain control (AGC)	On/Off switchable
Gamma correction	approx. 0.45
Automatic shutter (AES)	1/50 ~ 1/100.000sec.
Integration rate	no
Flickerless function	On/Off switchable
White balance (AWB)	Automatic control
Backlight compensation	BLC, On/Off switchable

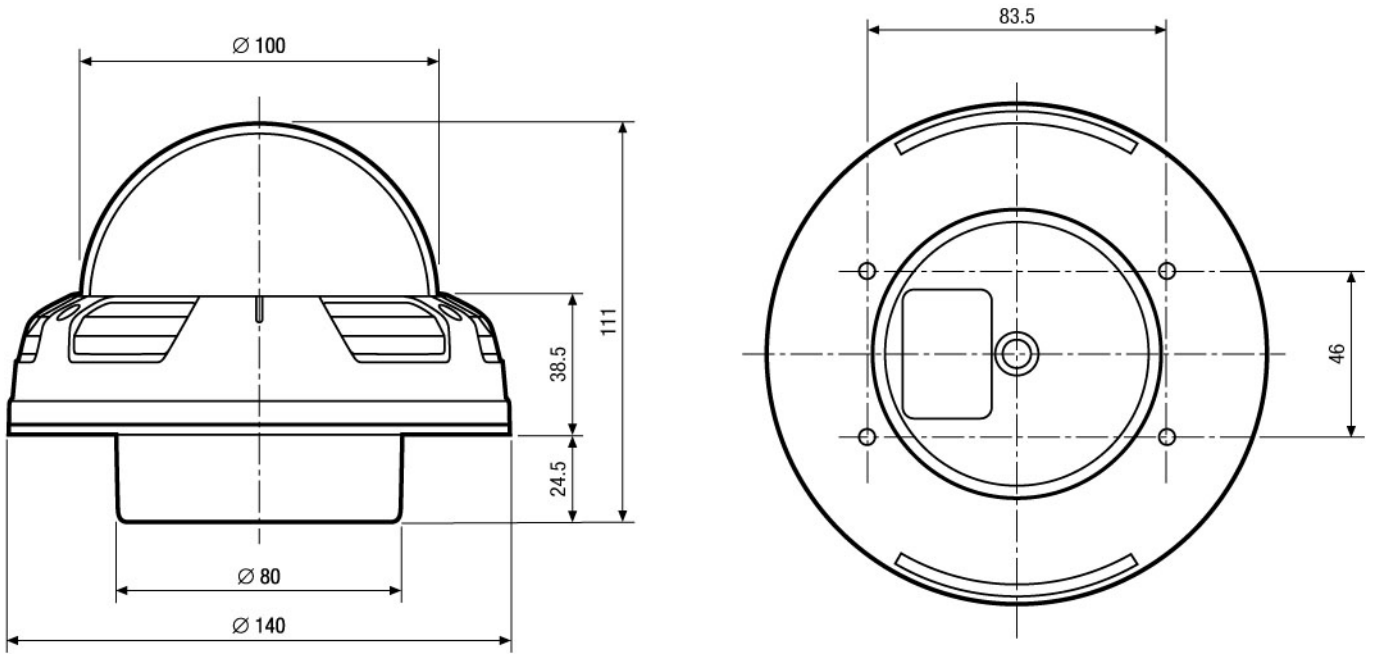
VKCD-1313FM/MF

(Specifications continued)

Aperture Correction (APC)	Horizontal and vertical
IR cut filter	no
Video outputs (type)	CVBS
Video outputs	1Vp-p, CVBS, 75ohms
Lens mount	integrated lens
Lens type	fixed focal length
Lens	F2.0/3.8mm with galvanometer controlled iris
Application range	security
Nominal format size	1/3"
Aspherical technology	no
Focal length	3,8mm
Horizontal angle of view	65°
Iris control	no
Mount	n/a
Cable connection	Video (BNC), 12VDC (DC jack)
Serial interfaces	no
Temperature range (Operation)	-10° ~ +50°C
Heater	no
Protection rating	IP65, at installation according to the manual
Supply voltage	12VDC, (9 ~ 15VDC), 12VDC ±0,5V recommended
Power consumption	3.0watts max.
Vandalism resistant	yes
Bubble	100mm diameter, Vandal resistant 3mm -tinted-polycarbonate with high resistance
Colour (bubble)	tinted
Camera adjustment	3-axis camera adjustment: 360° horizontal rotation / +45° tilt rotation, 360° pan rotation
Camera fixing	no
Mounting	in-ceiling mount, wall mount
Housing	indoor housing, Die-cast aluminium with tinted polycarbonate bubble
Housing material	aluminium
Colour (housing)	Pantone Cool Gray 1C
Dimensions (HxWxD)	See drawing
Weight	630g
Parts supplied	Mounting screw kit, Torx wrench key, Service monitor cable (Cinch plug), Guide pattern, Manual

Accessories

40072 / H0620M	F2.0/6mm Board Camera Lens, 1/3" M12x0.5
70447 / VT-PS12DC-5	Plug-in Power Supply Unit 100-240VAC 12VDC (1.0Amp), Regulated, with DC Plug
77773 / VT-PS12DCDT1	PSU 12VDC/1.0A, Regulated, Desktop Version, 1.8m Cables each w. open ends



Maße/Dimensions: mm

VIDEOR TECHNICAL E. Hartig GmbH
Carl-Zeiss-Straße 8 · 63322 Rödermark · Germany
Telefon +49 (0) 60 74/8 88-0 · Telefax +49 (0) 60 74/8 88-100
info@videortechnical.com · www.videortechnical.com



VIDEOR TECHNICAL