

Video Security



A10Z30NDAI

F1.5/10-300mm AI Motorzoom Lens, 1/2" C Mount

Art-No. 40235



Features

30x High-Speed Zoom Lens

Suitable for 1/2" and 1/3" Colour and B&W Cameras

C Mount

DC Controlled Iris

Without Built-in Auto Iris Amplifier

High Standard of Optical and Mechanical Quality

Quality Motors on Focus and Zoom

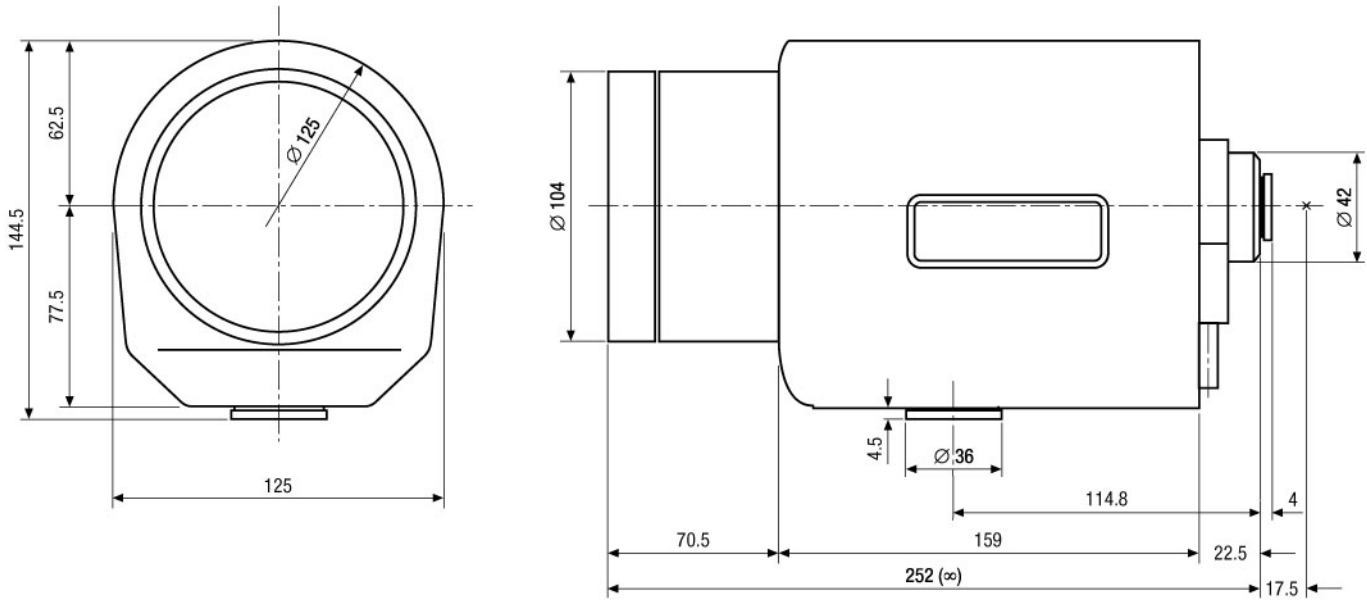
Adjustable Slip-ring Mount for Cable Positioning

Specifications

Focal length (f)	10-300 mm
Aperture range (F)	F1.5-F560
Lens mount	C
Nominal format size	1/2"
Flange focal length	17.526 mm
Horizontal angle of view at nominal format size	35.5°-1.25°
Minimum object distance (M.O.D.)	2.2 m
Screw-in depth	4.0 mm
Filter screw size	M100x1 mm
Slip-ring mount	340°-360° Variable adjustment range
Iris control system	Galvanometer
Supply voltage	8.5-16 VDC
Input signal range	0.5 to 1.0 Vp-p (C)CVS
Response time	Approx. 4-5 sec. (at 8 V)
Accuracy at +20°C	+/-15 % at video signal level
Supply voltage range	8 VDC +/-20%
Max. current consumption/motor (run)	60-80 mA
Max. current consumption	40 mA
Cable length	>50 cm
Motor clutch on focus/zoom	Yes

(Specifications continued)

Potentiometer on focus and zoom	-
Dimensions (HxWxD)	See drawing
Temperature range	-10°C to +50°C
Weight	3170 g



Maße/Dimensions: mm

VIDEOR TECHNICAL E. Hartig GmbH
 Carl-Zeiss-Straße 8 · 63322 Rödermark · Germany
 Telefon +49 (0) 60 74/8 88-0 · Telefax +49 (0) 60 74/8 88-100
 info@videortechnical.com · www.videortechnical.com

