



Wall Bracket

WatchMaster® IP Elite 3000 & 6000 Series Mounting Hardware



Ceiling Bracket



Wall Bracket with cable channel

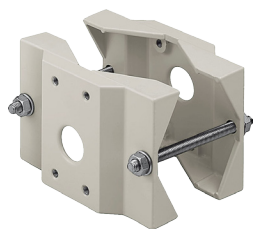
Part Number: 1017605-001



Ceiling Bracket with cable channel

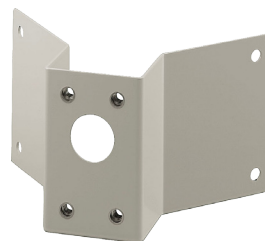
Part Number: 1017605-002

Bracket Adaptors



Pole Mount Adapter
diameter 2.5" to 4.3"
for use with 1017605-001

Part Number: 1017605-004



Corner Adapter
for use with 1017605-001

Part Number: 1017605-003



Pole Mount Adapter
diameter 3.14" to 5.9"
for use with 1017605-001

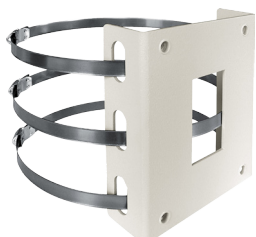
Part Number: 1017605-007

Also requires use of Wall Bracket Plate (Part Number 1017065-005).



Wall Bracket Plate
for poor consistency walls
for use with 1017605-001

Part Number: 1017605-005



Pole Mount Adapter
diameter 8.2" to 8.85"
for use with 1017605-001

Part Number: 1017605-006

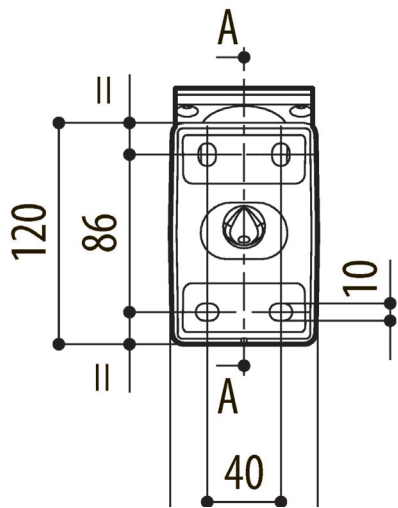
Also requires use of Wall Bracket Plate (Part Number 1017065-005).

Ceiling and wall mounting hardware include:

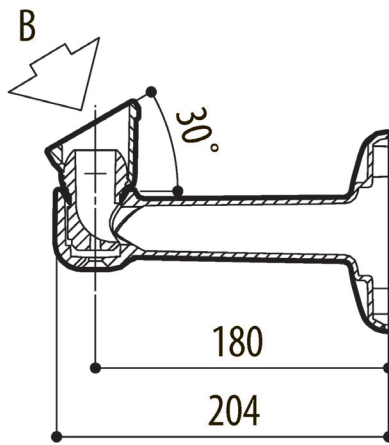
- Four (4) Screws to mount camera to attachment
- One (1) Gasket
- One (1) Allen wrench



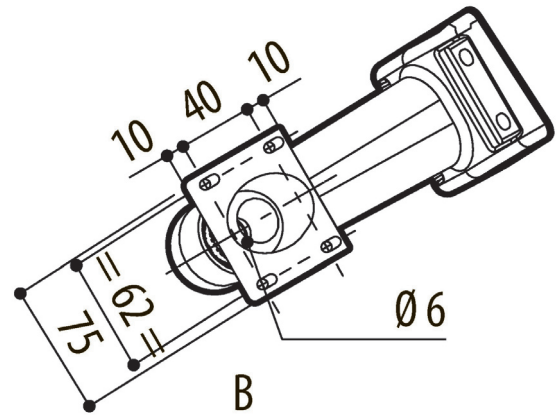
Wall Bracket (Part Number 1017605-001)



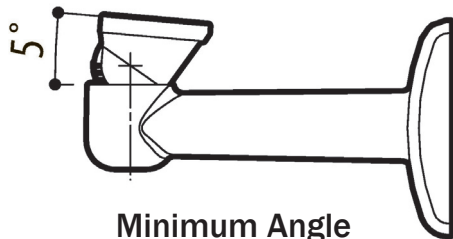
Top View
Mounting Bracket



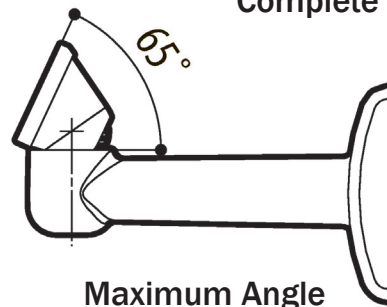
A - A
Side View
Complete Assembly



Top View
Complete Assembly

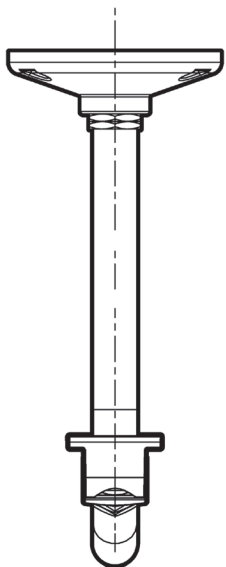


Minimum Angle
Mounting Bracket

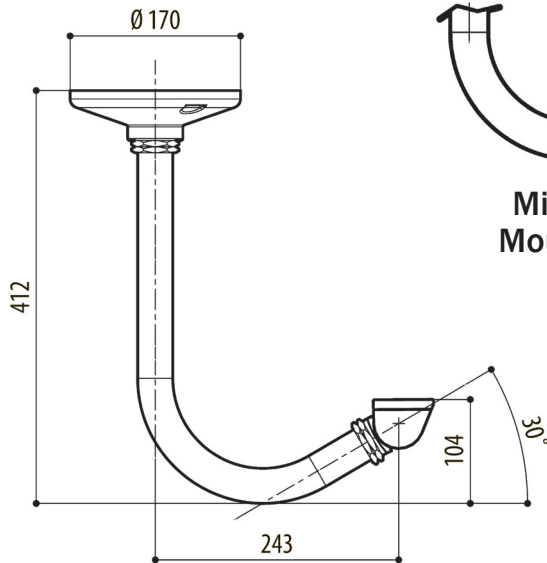


Maximum Angle
Mounting Bracket

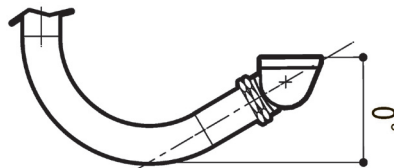
Ceiling Bracket (Part Number 1017605-002)



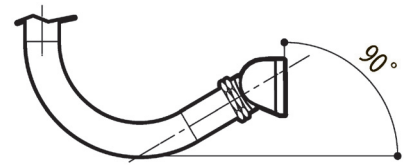
Front View
Complete
Assembly



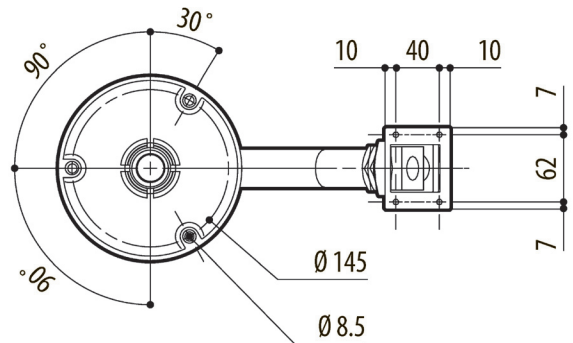
Side View
Complete Assembly



Minimum Angle
Mounting Bracket



Maximum Angle
Mounting Bracket



Top View
Complete Assembly