



Thermal Imaging Camera

Industry temperature measurement

T2-S

160×120 Uncool FPA detector

Portable, high thermal sensitivity



www.dali-tech.com

T2-S Portable Thermal Imaging Camera



Color Warning



40 seconds of digital voice
per image stored with image



Parameter

	Item	T2-S
Detector characteristics	Detector type	Uncooled FPA microbolometer
	Array size/format	160×120
Image characteristics	Field of view/min focus distance	18°×13°/0.3m
	Spatial resolution (IFOV)	1.9mrad
	Thermal sensitivity	≤0.06°C@30°C
	Frame rate	50/60Hz
	Focus	Manual
Image display	Spectral range	8-14μm
	LCD	Built-in high-resolution color 2.5" LCD
Measurement	Temperature ranges	-20°C~+350°C, optional up to +600°C
	Accuracy	± 2 °C or ± 2% of reading, whichever is greater
	Measurement correction	Automatic/manual
	Measurement mode	Movable spot, Movable area(maximum, minimum and average temperatures), Isotherm, Alarm(voice, color)
	Color palette	8
	Image adjustment	Auto/manual gain and brightness
	Setup functions	Date/time, temperature unit, language
	Emissivity correction	Variable from 0.01 to 1.0
	Ambient temperature correction	Automatic corrections according to user input
	Atmospheric transmission correction	Automatic correction according to user input object distance, relative humidity, ambient temperature
Image storage	Storage card	Built-in flash memory, Up to 2000 images
	Storage mode	Automatic/manual single image saving
	File format-thermal	JPEG, 14 bit thermal image with measurement data
	Voice annotation	Input via built-in microphone Up to 40 seconds of digital voice per image stored with image
Laser pointer	Laser pointer	Class 2, 1mw/635nm(red)
Power supply	Battery type	Li-Ion, rechargeable
	Battery operating time	3 hours continuous operation
	Charging system	Intelligent charger or power supply adaptor(optional) online charge
	Power saving	YES
	External power	10-15V DC
Environment	Operating temperature	-15°C~+50°C
	Humidity	≤90%non-condensing
	Encapsulation	IP54
Physical characteristics	Weight	0.6Kg
	Dimensions	250mm×100mm×72mm
Interface	External DC input	Yes
	Audio output	Yes
	Video output	PAL/ NTSC
	USB	Image (thermal and visual), measurement data and voice transfer to PC

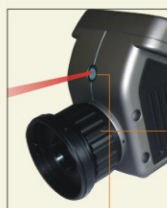
▲ The information contained in this document is subject to change without notice



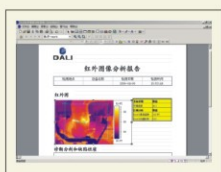
Low power consumption,
3 hours continuous operation



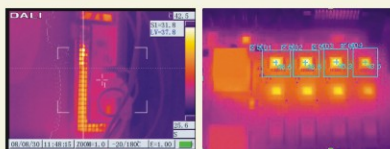
Audio Output
USB Video Output
Power connector



Laser Pointer
Manual focus



Free analysis software



Line measurement Area measurement



Optional Lenses