



DLS-XC Series

Online observation thermal imaging system



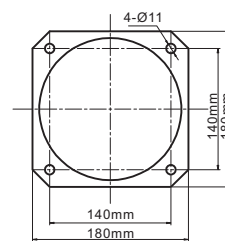
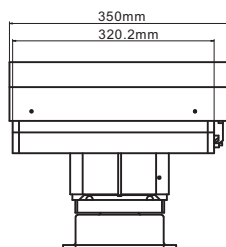
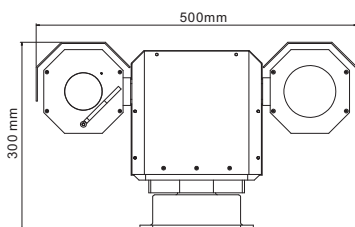
Application

All weather surveillance site like:
Factory Park, airport, parking pot, sea costal etc.



Features

- Two independent channels video output, thermal video and visual video or only one;
- Channel video output by way manually switch, or automatically switch by light condition;
- Thermal camera could easily detect targets in the fog frost, rain frost and night;
- Image enhancement function, improve detection ability;
- Multi-definite modes, which meet different needs;
- RS-485 control, support Pelco-D/P.



Mounting holes bitmap



DLS-XC Specifications



Items	DLS-L09XC	DLS-L18XC	DLS-L37XC	DLS-L50XC	DLS-S75XC
Thermal imaging camera					
Detector type	Amorphous Silicon mirco-bolometer FPA				
Spectral range	8~14μm				
Pixels	384×288				
Pixel size	25μm				
Focus length	9mm	18mm	37mm	50mm	75mm
FOV	61.1°×45.8°	30.6°×22.9°	14.8°×11.1°	11°×8.2°	7.3°×5.7°
Focus Range	Athermalized, focus-free				Electronic focus
Video output	PAL				
Frame rate	50Hz				
Image polarity	Black hot/White hot				
Interface	RS485, PELCO-D/PELCO-P/DALI				
Visual camera					
Resolution	Totally 795(H)×596(V), effective 752(H)×582(V)				
Pick-up device	1/4 "Ex-view HAD PS color CCD				
Lens	3.66-91.36mm(F1.65-3.0), 25xoptical, 16 digital				
Horizontal resolution	Color 600TVL, B/W 700TVL				
Focus	Auto				
IRIS	Auto				
Pan-tilt					
Angle show function	PELCO-D				
Horizontal angle of rotation	0~360° Continuously rotation				
Vertical angle of rotation	-90°~+90°				
Horizontal rotation speed	0.1°~9°/S				
Vertical rotation speed	0.1°~4°/S				
Preset	80				
Auto scan	1				
Auto tour	1				
Material	Aluminum				
Housing					
Color	White				
Material	Aluminum				
Sun shield	Yes				
System characteristic					
Dimension	500×350×300mm				
Protection level	IP66				
Weight	20kg				
Working Temp	-20°C~50°C				
Storage Temp	-40°C~70°C				
System interface					
Video	PAL 2 channels				
Communication port	RS485				
Protocol	PELCO-D/P				
Baud rate	2400/4800/9600 bps				
Power supply	AC 24V±25%				
Power consumption	<200W (add heater)				

▲ The information contained in this document is subject to change without notice

Observe the distance

Detection: 3 pixels on target , Recognition: 6 pixels on target

Detect/Identify(Unit:km)	DLS-L09XC	DLS-L18XC	DLS-L37XC	DLS-L50XC	DLS-S75XC
1.8m Human(detection)	0.21km	0.43km	0.88km	1.2km	1.8km
2.3m Vehicle(detection)	0.27km	0.55km	1.1km	1.5km	2.3km
1.8m Human(recognition)	0.1km	0.21km	0.44km	0.6km	0.9km
2.3m Vehicle(recognition)	0.13km	0.27km	0.56km	0.76km	1.1km