



Thermal Imaging Module

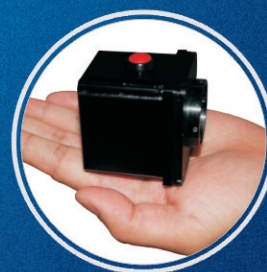
Uncool type

D760 Series

160 × 120 uncool FPA detector

Low cost, 50Hz realtime measurement

Apply to surveillance



D760 Series Thermal Imaging Module



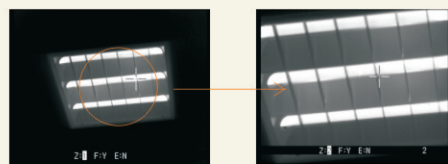
Power connector

Video/Control/RS232 connector

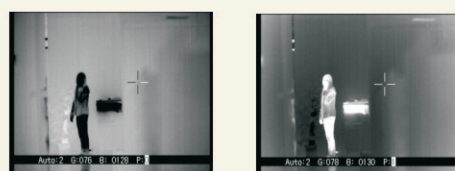
D760 is designed to be a low cost good quality infrared imaging module. Featured with low power consumption, low noise, ultra-compact and real-time thermal video surveillance (50Hz), DL760 offered continuously infrared thermal imaging video output under wide operating temperature range and image storage function, which meets variety application including industry medical electronic, research, public safety and etc.



Optional lenses



2X electronic zoom



Hotblack/hotwhite reverse display



Multi user-defination image mode



Brightness/gain adjustment



Parameter

Item		D760B	D760C
Detector characteristics	Detector type	Uncooled FPA microbolometer	
	Array size/format	160×120	
	NETD	≤100mK@f/1, 300K, 50Hz	
	Frame rate	50Hz	
	Spectral range	8-14μm	
Image manage	A/D Resolution	14Bit	
	Video D/A	10Bit	
	Start-up time	<25s (At 25°C ambient temperature condition)	
Thermal image adjust	Brightness/Gain adjustment	Manual adjust brightness/gain, Automatic adjust brightness and manual adjust gain, Automatic adjust brightness/gain	
	Automatic adjust brightness/gain mode	2 fixed modes, 8 user-defined modes	N/A
	Image polarity	Hot black/hot white	
	Noise reduction	YES	
	Image enhancement	YES	
	Calibration	Automatic adjust in start time, manual adjust in stable state	
	Crosshair	On/off	
Image storage (Optional)	Storage card	Built-in flash memory, up to 100 images	
	File format	JPEG	
Power supply	External power	10~15V DC , 8V±1V DC DC customized	
	Power consumption	<3.5W (Normal operating at 25°C)	<2.8W (Normal operating at 25°C)
	Driver for lens focus	Driver capability 8V 100mA	
Environment	Operating temperature	-40°C~+60°C	
	Humidity	-40°C~+70°C	
Physical characteristics	Weight	≤280g	
	Dimensions	66mm*63.5mm*52mm	
Interface	External DC input	Yes	
	Video output	Dual PAL	
	Digital video output	N/A	16bit digital output
	Remote control interface	RS232 , RS422/RS485 customized	N/A
	USB(Optional)	Image measurement data transfer to PC	N/A

▲ The information contained in this document is subject to change without notice