

Embedded Automatic Number Plate Recognition System

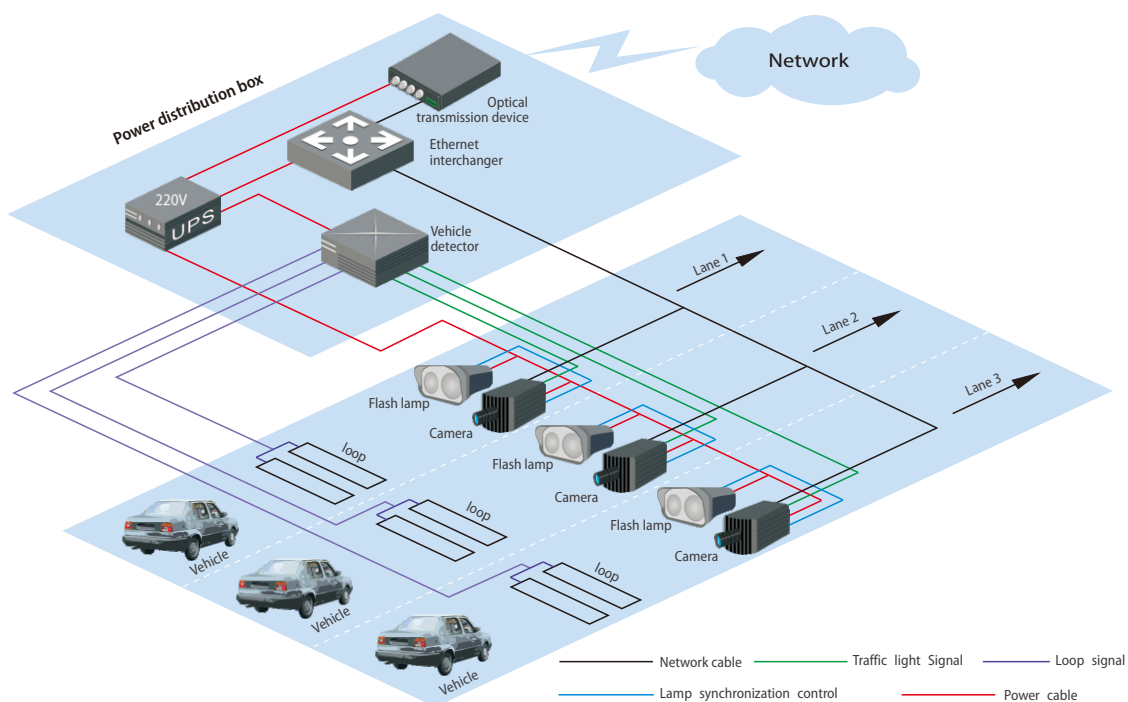


CP200 Automatic Number Plate Recognition system is mainly used to record image of each vehicle at the entry/exit of road and important road section. The license plate number will be recognized automatically. By analyzing the vehicle license plate, it can capture the blacklist vehicle and count the traffic flow. This system can do great help to seek suspect and improve the traffic efficiency.

System Composition

CP200 ANPR system is mainly composed of HD embedded CCD camera, flash lamp, vehicle detector, network transmission equipment, and etc.

System Structure

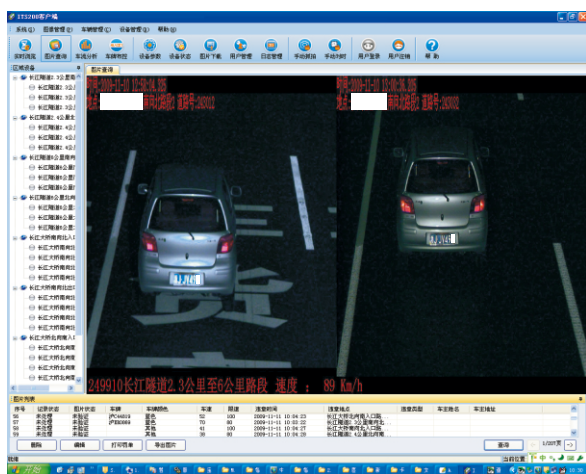


Features

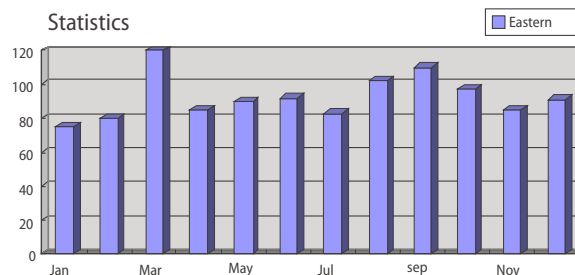
- Full embedded Linux system endure working in extreme environment



- Average speed measurement



- Traffic flow statistics



- Automatic license plate recognition



- 2.0 Megapixel high resolution CCD
- Dual encoding streams supported
- Real-time alarm (speeding alert, blacklist alert)
- Remote management
- Ultra low power consumption

Specifications

System Performance	Detection Mode	Video detection, Loop detection, Radar detection selectable
	Vehicle Captive Rate	>99%
	License Plate Recognition Rate	Daytime $\geq 99\%$, Nighttime $\geq 95\%$
	Vehicle Speed Measurement Range	$\leq 180\text{km/h}$
	Vehicle Speed Measurement Precision	$-3\%\sim 0$
	License Plate Recognition Time	$\leq 0.2\text{ s}$
Camera	Video Camera	CCD progressive scanning
	Resolution	1600×1200
	Record Mode	1~2 images / vehicle
	Shutter Speed	1/10000 second
Interface	Alarm In	4 channels
	Alarm Out	2 channels
	Data Interface	1 RS232 serial port, 1 USB port, 1 Ethernet interface (10M/100M)
Environmental	Working Temperature	$-30^{\circ}\text{C}\sim +70^{\circ}\text{C}$
	Working Voltage	AC 220V $\pm 20\%$, 50Hz

