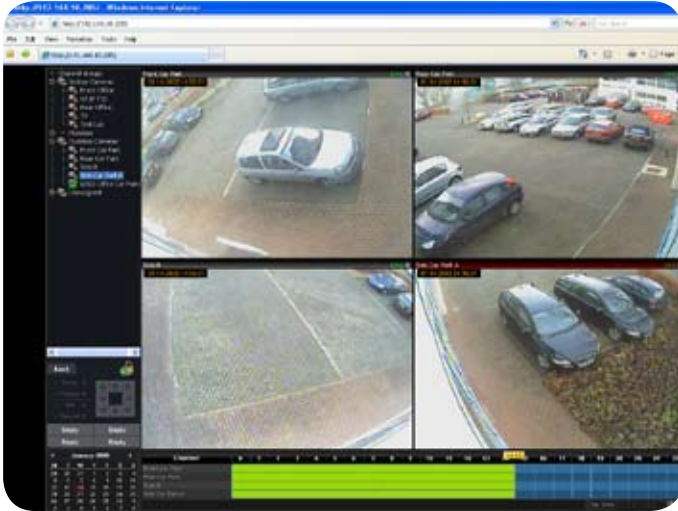




### Features

- ▶ Web Client users view and record only the video channels defined in their profile
- ▶ Recordings can be saved to the remote PC enabling export of video clips
- ▶ An image capture feature enables image snapshots of video to be easily exported
- ▶ Web playback with fast forward and reverse up to X4 of the recording speed
- ▶ Video timeline enables access and review of video located on the network
- ▶ Pre defined channel tours enable continuous viewing of video



The Web Client enables secure remote video surveillance for multiple users and is an optional module for the Cware open management platform. Users granted remote access authorization by the system administrator can access live and recorded video footage and control PTZ cameras from anywhere in the world. The web client allows monitoring of any remote site with simultaneous viewing of up to four live or recorded video channels.

Web Client's unique transcoding engine accommodates any network bandwidth regardless of the Internet connection. Individual channel performance settings support prioritization according to the importance of the video channel content allowing remote users access to important events as they happen. The web profile of each channel can be defined by frame rate, bit rate and video resolution so that individual users can be given specific surveillance tasks.



### Technical Specifications

#### Display

- ▶ User selectable player layout: 1, 2x2
- ▶ Auto-hide overlay of capture and recording control
- ▶ Time & date overlay

#### Channel Selection

- ▶ Double click / drag & drop from channel tree
- ▶ Channel display by logical channel grouping
- ▶ Channel tour support

#### Camera Control

- ▶ Pan, tilt, zoom, focus, iris, speed, preset recall

#### Recording & Playback

- ▶ Local recordings of displayed channels
- ▶ Local snapshot capture of displayed channels
- ▶ Synchronized playback of all displayed channels
- ▶ Normal, X2, X4 forward and reverse playback
- ▶ 24 hour timeline, monthly calendar

#### User Management

- ▶ Live view, playback and control restrictions as per remote site user profiles

#### Connection speed management

- ▶ User selectable
  - LAN
  - Transcoded - High Speed
  - Transcoded - Low Speed
  - Transcoded - Remote system pre configured default

### Germany

#### Headquarters

Controlware GmbH  
Waldstrasse 92  
63128 Dietzenbach  
Tel: +49 (0) 6074 858 00  
Fax: +49 (0) 6074 858 191  
Email: [info@controlware.de](mailto:info@controlware.de)  
Web: [www.controlware.com](http://www.controlware.com)

### Australia

Tel: + 61 (0)2 9765 8222  
Email: [sales@cware.com.au](mailto:sales@cware.com.au)

### Austria

Tel: +43 (0)1 890 0724 20  
Email: [info@controlware.at](mailto:info@controlware.at)

### Benelux

Tel: +32 (0)2 712 02 00  
Email: [info@controlware.be](mailto:info@controlware.be)

### France

Tel: +33 (0)1 610 610 60  
Email:  
[Commercial@controlware.fr](mailto:Commercial@controlware.fr)

### Italy

Tel: +39 (0)2 48559421  
Email: [info@cware.it](mailto:info@cware.it)

### Spain

Tel: +34 (0)620 30 00 68  
Email: [info@controlware.org](mailto:info@controlware.org)

### UK

Tel: + 44 (0)1635 584 500  
Email:  
[video@controlware.co.uk](mailto:video@controlware.co.uk)

### United States

Tel: +1 (0)732 919 0400  
Email: [info@cware.com](mailto:info@cware.com)

All specifications are subject to change without notice. Every effort has been made to supply complete and accurate information herein. © 2008 by Controlware GmbH. All rights reserved.

Ref. N°: CW/Marketing/RL, BH 01/2009