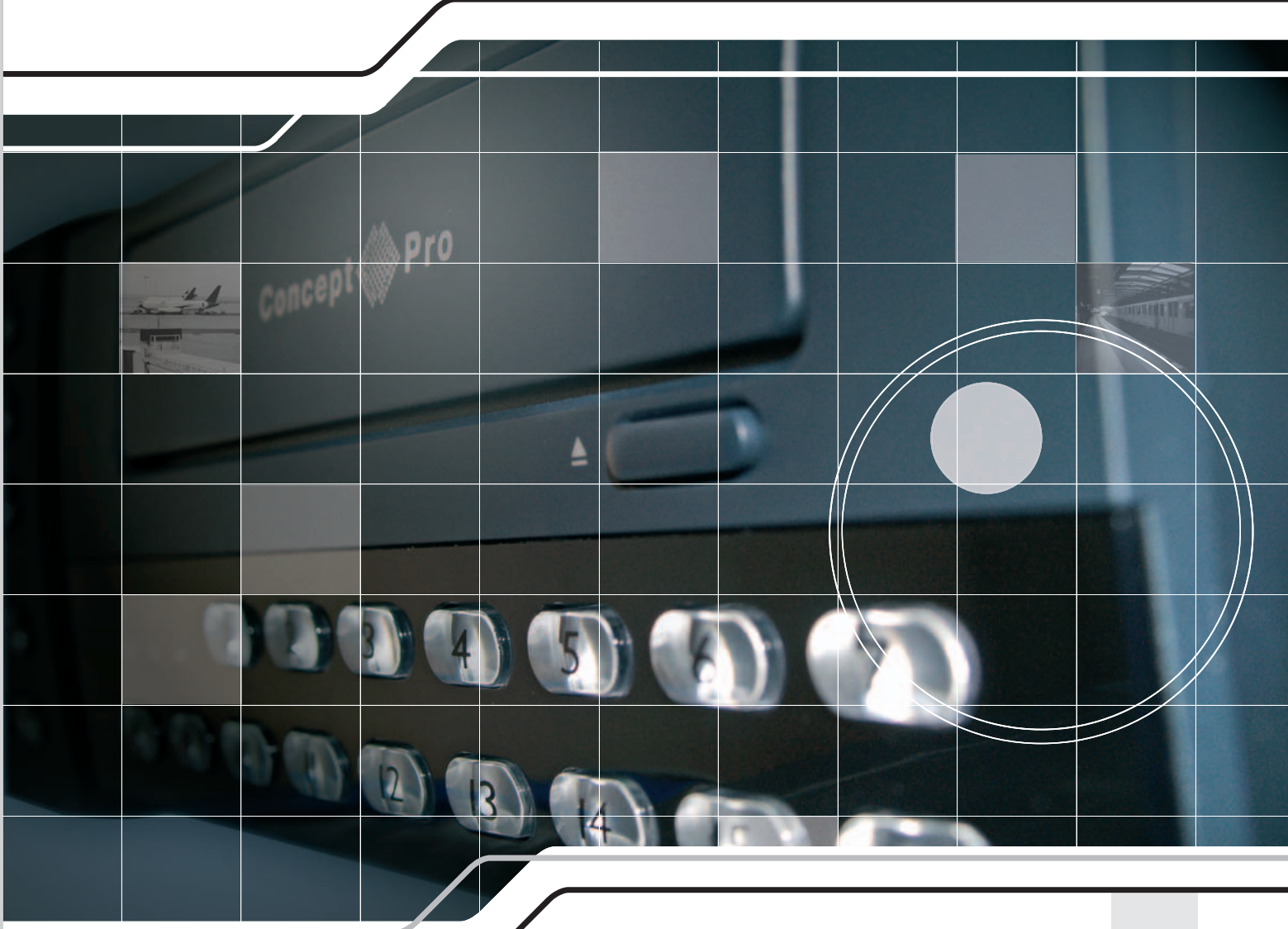




THE VXM4 RANGE



FROM A NAME YOU CAN RELY ON



KEY FEATURES



Enhanced Graphical User Interface (GUI)

The VXM4 menu structure and on screen display is presented in a simple to use and logical GUI format.



Enhanced Recording

Any operation performed on the VXM4 will not affect the recording including local playback, local set-up, multi user remote viewing and playback, remote set-up and archiving



Two Way Audio

4 audio inputs are supported which can be assigned to any video channel. Live and recorded audio can be monitored remotely over the internet and remote audio transmission back to the VXM4 is supported.



Remote Connection

Software is provided to allow remote connection to up to 4 VXM4 units in one session. Depending on user level, full VXM4 control is available over the internet as well as the ability to remotely configure the VXM4. Alarm outputs on the VXM4 can be remotely triggered over the internet.



Back-up

Recorded footage (including audio) can be archived to a USB memory stick, CD or optional DVD. Playback software is embedded with the backup files and the backup also contains the system event log and backup log for full traceability. Save your setup to USB to make future installations even more simple and time efficient.



Comprehensive recording setup

Recording can be scheduled, alarm activated or motion activated. For each type of recording, frame rates, image quality and audio recording properties can be adjusted, per hour, per day and for each individual channel. The VXM4 also has a panic recording feature (from the front panel or external input) which overrides all other recording settings to provide the best quality recording in the event of an emergency



Telemetry control

Full telemetry control is available from the front panel or remote connection and a wide number of speed dome protocols are supported. Protocols can be set individually for each channel and telemetry speed can be adjusted to suit particular speed domes.



Extensive monitor support

The VXM4 has 3 main monitor outputs (Composite, VGA and S-Video) which can be used simultaneously. Support is also provided for up to 4 spot monitors and each spot monitor output can be programmed in the VXM4 setup.



Live display

The VXM4 displays single or multi screen images and also has several sequence modes (standard and user definable)



Configuration backup

All configuration settings on the VXM4 can be saved to USB memory stick or a PC file remotely. The saved data can then be uploaded to other VXM4 units allowing rapid deployment where more than one VXM4 is being installed.



Email Support

The VXM4 supports can send emails to specific users to notify events such as alarm, motion detection, hard drive failure etc.



Jog Shuttle

The Jog / Shuttle wheel provides precise playback control on the VXM4 and allows 1x - 64x playback speeds in forward or reverse play and frame by frame advance



VA-KBDPRO+ Remote Control Keyboard

The VA-KBDPRO+ is a compact tri-axis PTZ controller which can control all features available on the VXM4 digital recorder. The VA-KBDPRO+ features built-in telemetry control and a 3 axis joystick, which enables an operator to easily control the pan, tilt and zoom functionality of any camera connected either directly or via the VXM4.

- 3 axis PTZ controller
- Compact & ergonomic design
- Multi protocol support including Pelco-D & Pelco-P
- Mixed protocol & baud rate support for each device
- Back lit display
- Can be operated at a distance of 300 metres from the VXM4



VA-MAT162 Matrix

The VA-MAT162 is a compact matrix system which can switch 16 video inputs to 1 or 2 monitor outputs. It is controlled either from the front panel or via RS-485 by a VA-KBDPRO+ PTZ keyboard. As well as individual channel to monitor selection, the VA-MAT162 has a user defined sequence mode with adjustable dwell time and options to exclude particular channels from the sequence.

The VA-MAT162 can be used with multiple VXM4 digital recorders to form the basis of complex surveillance system, with up to 256 speed dome cameras and 16 VXM4 16 channel DVRs, all controlled centrally by a single VA-KBDPRO+

- 16 inputs, 2 outputs
- Sequence mode
- PSU included
- Dimensions: 210mm(W) x 45mm(H) x 155mm(D)



At last a digital recording system from a name you can rely on

RECORDING SETUP

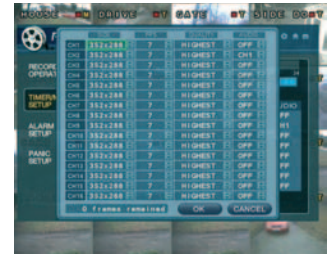
The intuitive setup of the VXM4 gives complete freedom to define exactly the right recording parameters to suit individual applications.

Each individual channel can be configured on a weekly, daily and hourly basis to record either by schedule, alarm input or motion detection. In addition, each channel can be configured on a weekly, daily and hourly basis for image resolution, frame rate, audio recording and image quality.

This flexibility allows recording time to be maximised without compromising playback quality.

A typical example might be a VXM4 configured to record continuously at lower frame rates during the day and then at higher frame rates on motion detection during the night.

In an emergency, the panic button or external panic input will override all other recording settings with specific panic recording settings which, again, can be defined to suit any particular application.



HARD DRIVE MONITORING

The VXM4 uses SMART technology to check the status of the hard drives. Each hard drive constantly monitors its own operating parameters – if any abnormalities are detected, the hard drive passes this information to the VXM4 which will notify the operator either by alarm output or email.

SMART monitoring ensures that potential data loss is avoided by predicting hard drive failure before it happens thus allowing preventative action and backups to be taken.



WATCHDOG

The watchdog is an independent part of the VXM4 system that monitors the system firmware every 5 seconds. If the watchdog detects any problem with firmware operation, it will automatically reboot the VXM4 to ensure that recording operation is not interrupted.

If a power cut happens on site, the watchdog also ensures that the DVR restarts cleanly and continues recording once power has been restored, and without any user intervention.

EXAMPLE: RECORDING TIMES

	160GB	250GB	500GB	750GB	1TB	1.5TB
4ch 25FPS	4d 19h	7d 12h	15d 0h	22d 12h	30d 0h	-
8ch 13FPS	4d 18h	7d 11h	14d 22h	22d 9h	29d 20h	44d 19h
16ch 7FPS	3d 4h	4d 23h	9d 22h	14d 21h	19d 20h	29d 18h

	160GB	250GB	500GB	750GB	1TB	1.5TB
4ch 13FPS	7d 18h	12d 3h	24d 7h	36d 10h	48d 14h	-
8ch 7FPS	6d 8h	9d 22h	19d 20h	29d 18h	39d 16h	59d 12h
16ch 3FPS	3d 19h	5d 22h	11d 20h	17d 19h	23d 17h	35d 14h

All recording times are based on highest quality, continuous recording at SIF (352 x 288) resolution, without audio. Recording times are given for guidance only and can vary depending on the nature of the scenes being recorded.

A comprehensive recording calculator allowing individual settings to be configured for all channels is available to download at www.videonctv.net/vxm4

PROGRAMMING THE VXM4

Programming the VXM4 is simple thanks to the intuitive Graphical User Interface (GUI). The menus and setup steps are presented in a logical manner allowing detailed configurations to be set up with ease.

When setup is complete, the configuration can be saved to local USB memory stick and transferred to other VXM4 units for rapid deployment where many units are being installed.

Once the installation is finished on site, it is still possible to view and program virtually all aspects of the VXM4 setup from a remote LAN or Internet connection. This allows diagnostics and additional configurations to be carried out on the VXM4 without having to make a site visit. Configuration files can also be uploaded remotely to the VXM4, ideal for situations where a VXM4 requires particular settings reloading after a factory reset.

BY HAND

The GUI setup menu is clearly structured and easy to navigate from the VXM4 front panel.



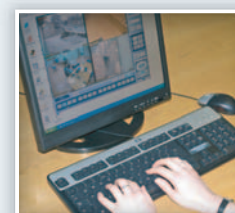
USB STICK

Preferred configurations can be saved to USB stick and subsequently uploaded to other units which require an identical configuration.

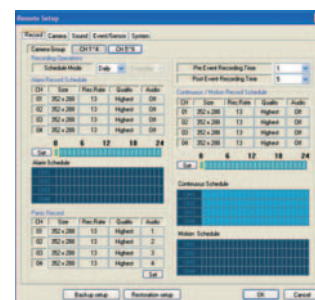


REMOTE PROGRAMMING

Virtually all VXM4 parameters can be programmed, saved and uploaded over a LAN / WAN connection.



REMOTE CONNECTION



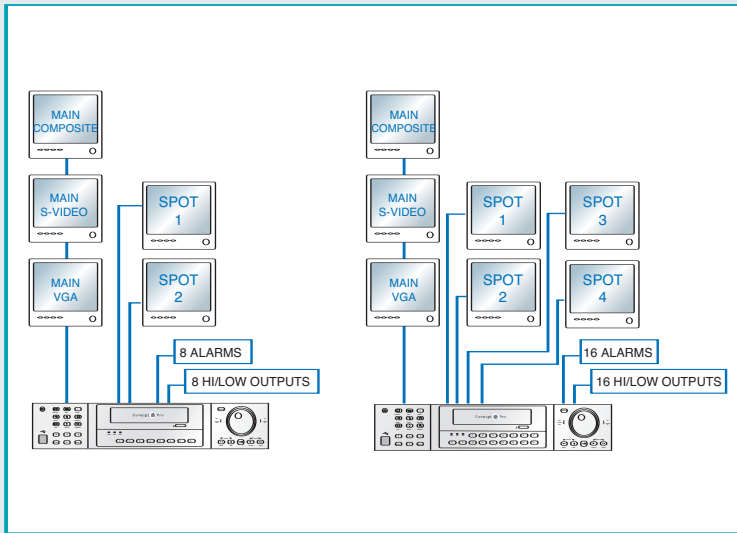
The software included to connect a VXM4 over a Local Area Network or the Internet provides access to virtually all functions available from the front panel of the VXM4, such as live viewing and playback, archiving of live or historic footage and VXM4 configuration.

With additional features such as multiple VXM4 connections, two way audio transmission, and the ability to remotely trigger VXM4 alarm outputs, the remote client software can easily be configured to form the basis of a simple remote monitoring station.

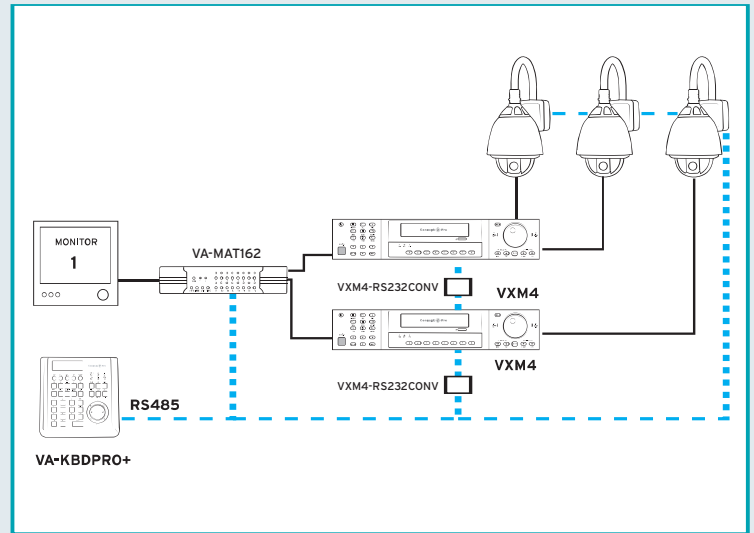
VXM4 settings can be uploaded to a local PC file and can then be used to configure additional VXM4 units allowing rapid remote deployment of multiple VXM4s in the field.

To download the software and connect to our demonstration site, please visit www.videonectv.net/vxm4

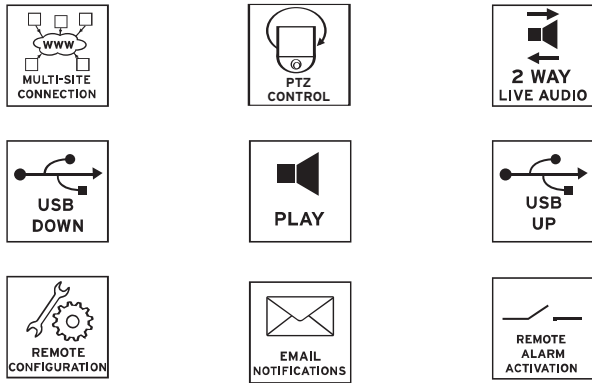
MONITOR AND ALARM CONFIGURATIONS



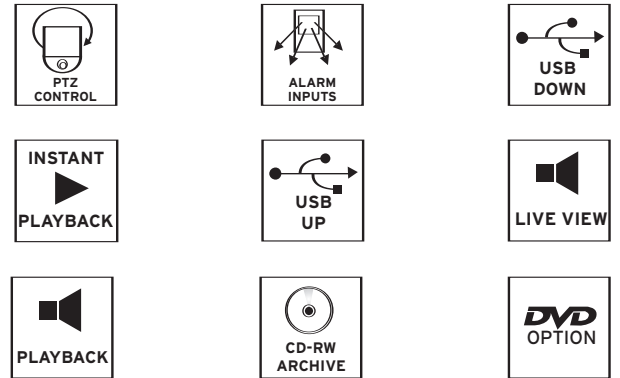
MULTI SYSTEM CONFIGURATION



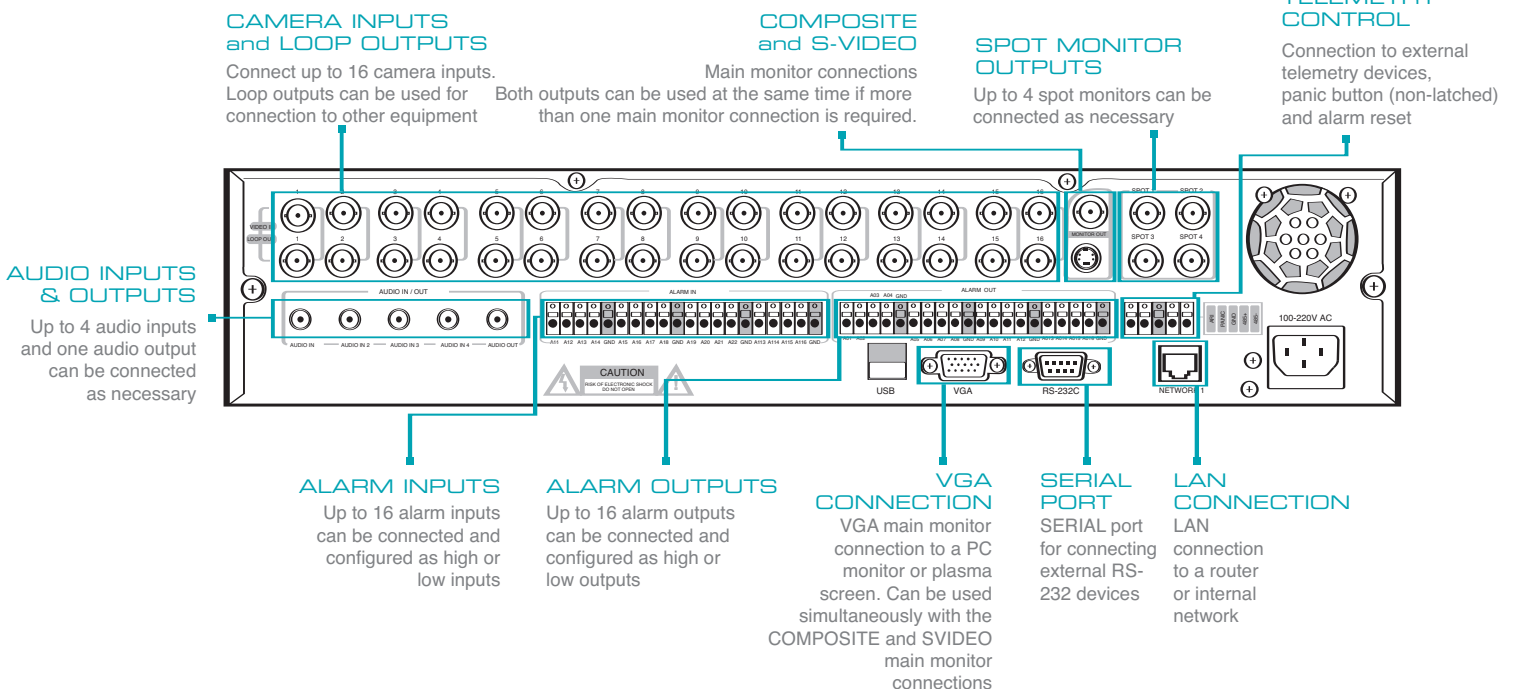
OPERATIONS AVAILABLE OVER REMOTE CONNECTION



OPERATIONS AVAILABLE FROM FRONT PANEL / REMOTE CONTROL



REAR PANEL DESCRIPTION (VXM4-16)



SPECIFICATION

MODEL		VXM4-4	VXM4-8	VXM4-16
Operation	Genuine triplex	Simultaneous recording, playback, network live view, network playback, network remote setup. Frame rate unaffected.		
Video in	Channels	4	8	16
	Connection	BNC, 1.0Vpp composite 75ohm unbalanced		
	Loop through	BNC, 1.0Vpp composite 75ohm unbalanced, auto termination		
Audio in	Channels	4		
	Connection	RCA, line level unbalanced		
Main displays	BNC	1.0Vpp composite 75ohm unbalanced		
	VGA	15 pin D-SUB 1024 x 768 @ 60Hz		
	S-Video	4 pin mini din Y/C		
	Screen display modes	1, 4	1, 4, 6 (1+5), 8 (1+7), 8	1, 4, 6 (1+5), 8 (1+7), 9, 13 (1+12), 16
	Sequence	Adjustable Dwell Time	Adjustable dwell time, user defined sequences	
	Digital zoom	N/A	Between 2x & 8x	
Spot displays	Channels	1	2 fully programmable	4, fully programmable
	Connection	BNC, 1.0Vpp composite 75ohm unbalanced		
	Display mode	Full screen sequence, adjustable dwell time		
Audio out	Channels	1		
	Connection	RCA, line level unbalanced		
External alarm	Inputs	4, NO or NC common ground	8, NO or NC common ground	16, NO or NC common ground
	Outputs	1, SPDT relay	8, high (+5V) or low (0V) selectable, common ground	16, high (+5V) or low (0V) selectable, common ground
User interface	On screen display	GUI, alpha blending		
	Control	Front panel or IR Remote		
Recording	Video CODEC	MPEG-4		
	Resolution options for each channel	SIF (352 x 288), 2 SIF (704 x 288), D1 (704 x 576)		
	Maximum total frame rate	100 FPS (SIF)		
	Image quality	Highest, High, Standard, Low		
	Pre-event recording	5 seconds max		
	Recording modes	Schedule / motion detection / alarm	Schedule / motion detection / alarm / panic	
	Frame rate options for each channel	25 - 13 - 8 - 6 - 3 - 2 - 1		
	Schedule	Per channel, per hour, per day / week		
	Configurable recording time limits	12 hours, 1 day, 2 days, 3 days, 1 week, 1 month		
	Audio	Audio inputs independently assigned to each channel		
	Motion detection	16 x 16 selectable grid with 10 levels of sensitivity		
	Covert recording	Yes, selectable by channel		
	Camera title	11 characters (max)		
Playback	Speed	Forward / reverse. 1x, 2x, 4x, 8x, 16x, 32x, 64x		
	Control	Front panel buttons and Jog / Shuttle ring		
	Search method	Calendar / timeline, event log, instant playback		
	Split screen display modes	1, 4	1, 4, 8	1, 4, 16
	Audio synchronization	Yes, any frame rate		
Archiving	Storage	CD-RW (DVD±RW option), USB Memory stick, Network		
	Format	Watermarked AVI		
	Archive data	Independent channel selection (video / audio), backup log, event log		
Time	Time zone	Worldwide, selectable		
	DST	Yes		
	Time synchronisation	Internet time server		
PTZ	RS-485	Multi protocol, baud rate and speed control for each channel		
System	Watchdog	Yes		
	Abnormal shutdown detection	Yes, with system auto recovery		
	HDD Error detection	Yes, SMART monitoring		
	System data backup / restore	Yes, USB memory stick or via remote client		
Network	Connection	RJ45, 10/100 Ethernet		
	Simultaneous connections	4 (max)		
	DHCP	Yes		
	DDNS	Yes		
	Two way network audio	Yes		
	Bandwidth management	Yes		
Remote client	Client software	Yes, included		
	Remote configuration	Yes		
	Remote PTZ control	Yes		
	Email event notification	Yes		
Storage	Maximum Capacity	Currently 1TB	Currently 1.5TB	
	Storage	2x HDD maximum	3x HDD maximum	
	Recording options	Stop when full / overwrite		
Event handling	Source	Alarm in, motion detection, video loss, HDD error		
	Action	Record, alarm out, email notification, log, remote client popup, buzzer, full screen popup		
Security	User levels	ADMIN, MANAGER, USER		
	Key Lock	No	Yes, password protected	
Physical	Dimensions	360mm(w) x 400mm(d) x 68mm (h)	428mm(w) x 475mm(d) x 93mm(h)	
	Weight	4.5kg (without HDD)	4.8kg (without HDD)	

Videcon PLC, Unit 1, Concept Business Park, Smithies Lane, Heckmondwike, West Yorkshire, WF16 0PN
 Sales +44 (0)1924 528000 Accounts +44 (0)1924 528006 Technical +44 (0)1924 528004
 Fax +44 (0)1924 528005 Email sales@videcon.co.uk