

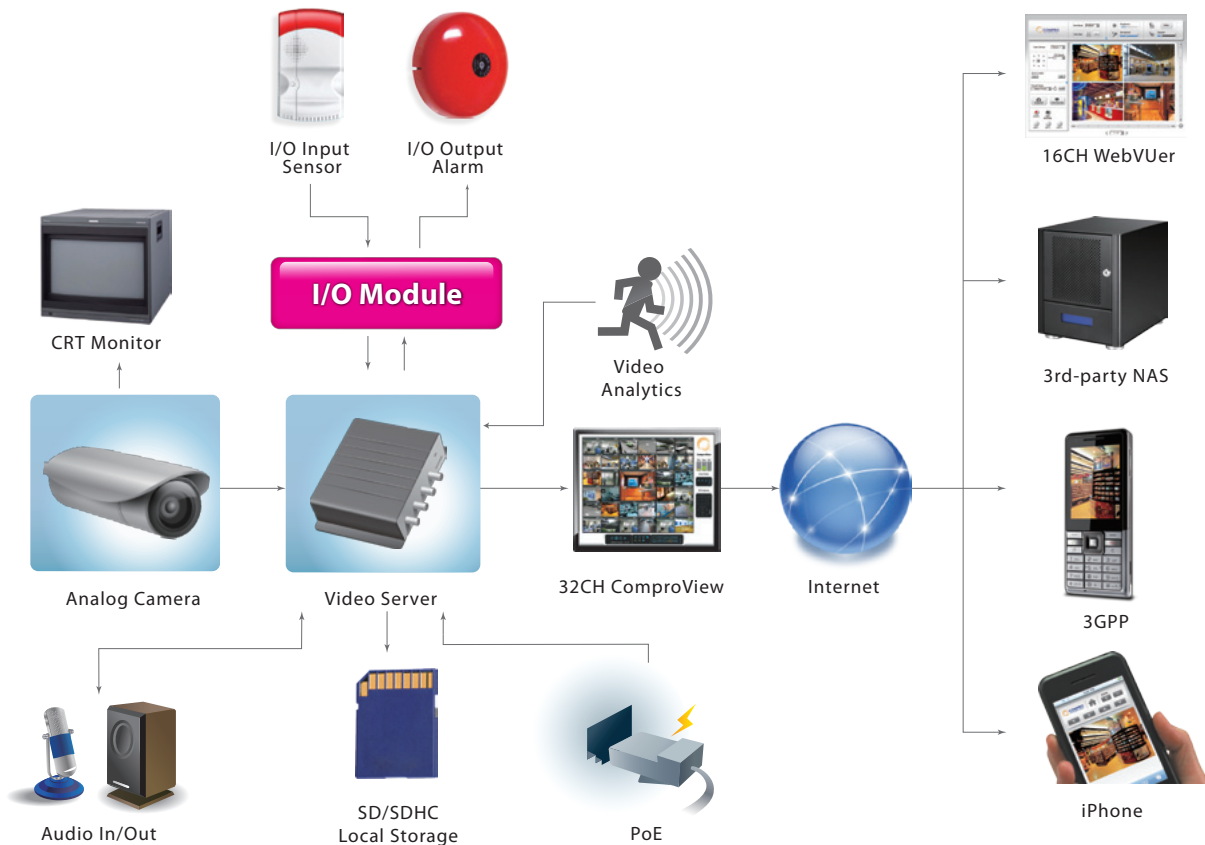
Bullet Camera
CP480

Outdoor-ready • Super Hi-Res • Day & Night • IR LED

- Outdoor-ready
- 1/3" Sony® 960H EXview HAD CCD II
- Sony® Effio-E 12-bit DSP
- Super hi-resolution: 680 TVL (color); 700 TVL (black/white)
- True Day/Night with mechanical IR cut filter (ICR)
- Built-in 3.7~12 mm varifocal lens
- 30 Built-in IR LEDs
- ATR 128X digital WDR (52dB)
- Anti-headlight (HLC)
- 2D Digital Noise Reduction
- High contrast image
- Video motion detection
- White balance, electronic shutter, gain control, backlight compensation
- Double glass for avoiding IR reflection
- Built-in OSD control joystick
- Multilingual OSD menu
- IP66-rated weatherproof casing



Application Diagram



TECHNICAL SPECIFICATIONS

Video

Image	
Device	Authentic SONY 1/3" 960H EXview HAD CCD II
Digital Signal Processor	Authentic SONY Effio-E DSP 12-bit
Effective Pixel	976 x 494 / 976 x 582
System	
Scanning	Interlaced
Synchronization	Internal
Resolution	
Horizontal	Color: > 680 TV Lines Black/White: > 700 TV Lines
Day & Night	
Minimum Illumination	0 Lux when IR on
True D/N	Mechanical IR cut filter
IR LED	30 pcs, 850 nm, eective 20~35 m, double glass
Video Output	BNC out x 1
S/N Ratio	50 dB

Lens

Lens Type	Tamron vari-focal, 3.7~12 mm, F1.6
Auto Iris	Auto

Function

OSD	Yes
Camera ID	Yes
Lens Control	Yes
Image Optimization	Mirror, Brightness, Contrast, Sharpness, Hue, Gain

Motion Detection	Yes (4 zones)
Privacy Mask	Yes (4 zones)
Exposure Control	AES
White Balance	ATW, Push, Anti-Color Rolling, Manual
Backlight Compensation	BLC, HLC
Wide Dynamic Range	Digital (ATR)
Digital Noise Reduction	2D DNR

General

Multi-lingual OSD Menu	English, Japanese, German, French, Russian, Portuguese, Spanish, Chinese
Casing	Aluminum extrusion (Camera body), Die-Cast Aluminum (Front and rear end cap); sunshield
Dimensions	264 x 77 x 108 mm (L x W x H, including sun shroud and connector)
Weather Resistance	IP66
Bracket	Cable management
Power Requirement	DC 12V, AC 24V \pm 10%, terminal block

Environmental

Operating Temperature	-10°C (14°F) ~ +50°C (122°F)
Storage Temperature	-20°C (-4°F) ~ +60°C (140°F)
Humidity	20% ~ 80% (non-condensing)

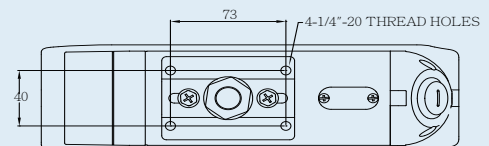
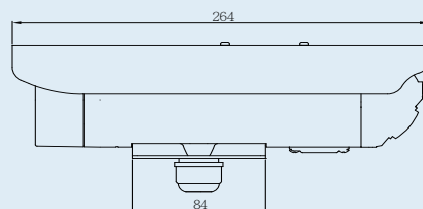
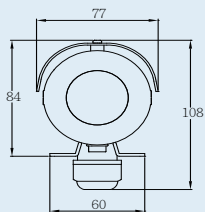
Certifications

Listed	CE / FCC
---------------	----------

Optional

Accessories	Power adaptor
--------------------	---------------

Dimensions



* Specifications are subject to change without prior notice.

* For complete product information, please contact a Compro Authorized Security Professional near you or write to security@comprousa.com.

