

you can
Canon

Network
Camera
Range

SUPERIOR OPTICS.
OUTSTANDING PERFORMANCE.

NETWORK CAMERA RANGE

NETWORK CAMERA SOLUTIONS

Don't miss a thing



you can
Canon

Canon Inc.
www.canon.com

Canon Europa N.V.
www.canon-europe.com

English Edition 0131W275
© Canon Europa N.V., 2009 (0109)



©1986 Panda symbol WWF
© WWF Registered Trademark

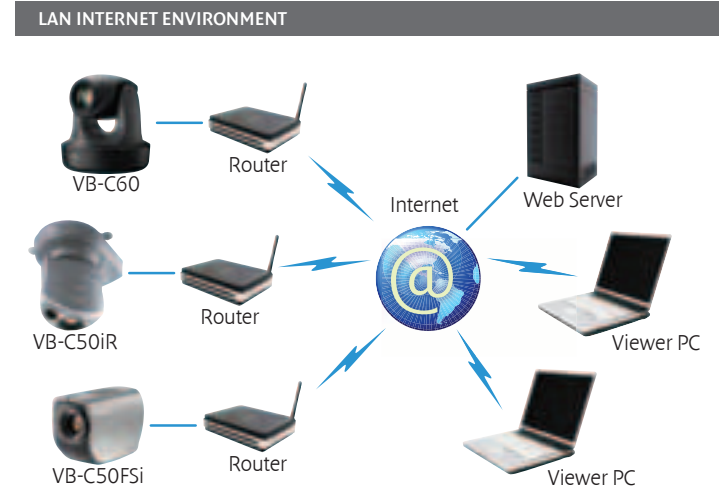


Capability without Boundaries

Today, the need has never been greater for effective, reliable security. That's a given. And Canon Network Video Solutions certainly answer the call. And yet, these products are so flexible and versatile in performance, their capabilities extend beyond security surveillance and are utilised in a host of industries and purposes, including:

- Remote monitoring for quality assurance at manufacturing and retail locations
- Web-based property observation applications for use by hotel and resort guests
- Distance learning and other video sharing operations
- Traffic reporting for broadcast by TV and municipalities

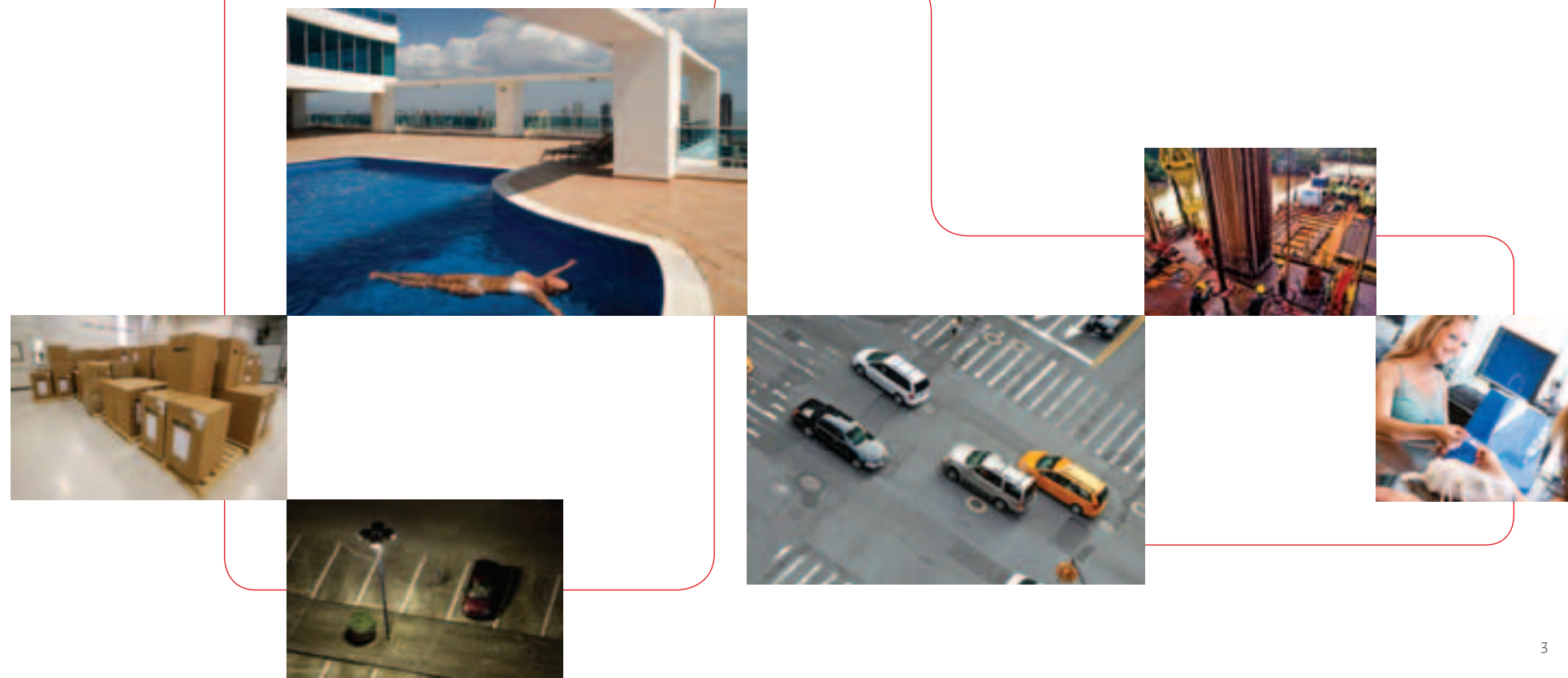
The possibilities are endless. Wherever there's a need for dependable capture, recording and distribution of video, Canon Network Video Solutions deliver on all counts.



Advanced Canon technology lets you maximise every opportunity. Our Network Video Solutions are operated — on site or remotely — with intuitive single-point-of-management convenience. They come fully Web-enabled for easy networking across LAN or WAN environments. And proprietary Canon breakthroughs like DIGIC NET allow for quality video capture and streaming at full 30fps. These advances, and so many more — like ingenious power options for reducing installation costs — all make Canon your reliable, flexible, compatible choice for Network Video Solutions.

Focused on Leadership

Looking for excellence in Network Video Solutions? You've come to the right source. For over 70 years, Canon's heritage in optics and colour management have remained unrivalled. Unlike other manufacturers, Canon's main focus is the optical sciences. We spend significant R&D resources in cultivating growth in the five "imaging engines" — image capturing, electrophotography, inkjet printing, photolithography and displays — and these exciting breakthroughs benefit every Canon product. Our full line of Network Video Solutions is no exception. From the creation of the incomparable Canon lens to Canon's high-accuracy colour management system, Canon optics are best-of-breed. The image of perfection.



An Eye on Performance

At the heart of each Canon Network Video Solution is a powerful Canon camera. These models represent technology's finest for commercial and industrial applications. And with world-class Canon engineering and design, form and function come together to achieve unparalleled results. Compact bodies with stylish designs assure unobtrusive installation. Super-wide-angle lenses, enhanced by the industry's most powerful zooms plus auto-focus help you increase clarity and coverage while deploying less gear. Powerful software solutions put more control in your hands. Our lineup of Network Video Solutions covers every need.



VK Network Video Monitoring & Recording Software

Canon offers software to accommodate the needs of any size operation. For large-scale, multi-location operations requiring the use of up to 64 of our network cameras, choose the VK-64. For smaller operations, our VK-16 software offers all of the same capabilities, but does so for up to 16 network cameras. Our VK-Lite software, which provides basic monitoring for no more than four cameras, comes bundled with VB-C60 and VB-C500D models.



**VB-C60
PTZ Network Camera**

Item Code: 2812B004AA

The VB-C60 is an extremely flexible and versatile camera, capable of capturing, recording, and distributing video for a wide range of purposes both indoors and outdoors.

- 40x Optical Zoom — Industry's Most Powerful
- 56° Field-of-View Wide-Angle Lens
- Full 360° Horizontal Coverage with Extreme Pan & Tilt
- Fast, Pinpoint Auto-Focus
- 3 Metering Modes – Centre-Weighted / Average / Spot Metering
- Shutter Speed Priority AE
- Low-light sensitivity – Minimum Illumination 0.7 lux
- Auto Day and Night Mode
- 7 Levels of Exposure Compensation
- Motion Detection and Auto-Tracking
- Event-Based Notification by Email
- Powerful DIGIC NET Processor
- Two-Way Audio Capability
- Audio Playback
- IPv6 and Internet Protocol Security (IPsec)
- Image Upload via FTP, http or SMTP
- Simultaneous JPEG & MPEG-4 Video
- Multiple client streaming
- Streaming at Full 30fps
- Smart Shade Control
- Progressive Scan
- Viewer & Admin tools
- 3 User Authority Levels
- PoE (Power over Ethernet), DC or AC



**VB-C50i/R
PTZ Network Camera**

Item Code: VB-C50i 9781A008AA / VB-C50iR 9782A007AA

One of Canon's most advanced network cameras, the VB-C50i combines a high-precision PTZ (pan, tilt, zoom) camera and a built-in Web and FTP server — all in one sleek, attractive, compact unit. The VB-C50iR is the ceiling-mounted version of the VB-C50i.

- 26x Optical Zoom
- Low-Light Sensitivity — Colour Imaging with Only 1 Lux Illumination
- High-precision Pan, Tilt and Zoom
- 3 Levels of Exposure Compensation
- JPEG Streaming at Full 25fps
- Audio Playback
- Fast, Pinpoint Auto-Focus
- Infrared Image Capture in Night Mode
- Motion Detection and Auto-Tracking
- Preset Tours For Auto-Movement through 20 Viewing Angles
- Built-In Network Camera Server
- Two-Way Audio Capability (with optional VB-EX50)
- Viewer & Admin tools



**VB-C300
Wide-Angle PTZ Network Camera**

Item Code: 1867B002AA

The VB-C300 offers wide coverage and superior image quality to meet the needs of diverse applications. It's ideal for on-site or remote monitoring in tight spaces as well as comprehensive surveillance of large sites.

- 70° Wide-Angle AF Lens
- 2.4x Optical Zoom / 4x Digital Zoom
- Fast, Pinpoint Auto-Focus
- Low-Light Sensitivity — Colour Imaging with Only 1 Lux Illumination
- Full 360° Horizontal Coverage with Extreme Pan & Tilt
- 3 Levels of Exposure Compensation
- JPEG Streaming at Full 30fps
- PoE (Power over Ethernet), DC or AC
- Progressive Scan
- Auto Day and Night Mode
- 3 Metering Modes – Centre-Weighted / Average / Spot Metering
- Fast, Pinpoint Auto-Focus
- Built-In Network Camera Server
- Two-Way Audio Capability
- Optional Dome Cover
- Viewer & Admin tools



**VB-C50FSi
Fixed Network Camera**

Item Code: 0777B002AA

For monitoring applications that require high image quality and clarity, the VB-C50FSi is a powerful, cost-effective solution. It's ideal for securing building entrances, ATMs, and other locations that don't require pan and tilt control.

- 26x Optical Zoom / 12x Digital Zoom
- Fast, Pinpoint Auto-Focus
- Low-Light Sensitivity – Colour Imaging with Only 1 Lux Illumination
- PoE (Power over Ethernet)
- Motion Detection
- 10 Zoom Presets
- Built-In Network Camera Server
- Two-Way Audio Capability (with optional VB-EX50)
- Viewer & Admin tools
- JPEG Streaming at Full 25fps
- PoE (Power over Ethernet), DC or AC
- Audio Playback



**VB-C500D
Fixed Dome Network Camera**

Item Code: 3934B003AA

Featuring a wide-angle varifocal lens, 2.4x optical zoom and colour video recording in light levels as low as 0.2 lux, the VB-C500D is an ideal camera for fixed-mount security monitoring applications.

- Canon wide-angle varifocal 2.4x zoom lens
- Motion JPEG & MPEG-4 video up to 640 x 480 pixels
- Progressive scan CCD, up to 30 fps
- Colour video in low light, down to 0.2 lux
- Automatic Digital Night Mode
- Power over Ethernet
- Full-duplex audio

Versatile Features for Viewing Excellence

These features are shared by many of our Network Video Solutions. Be sure to refer to the chart in the back for a detailed listing of specifications.

GENUINE CANON OPTICS

Industry’s Most Powerful Zooms

With all of our network cameras, you get the superior optics that have become synonymous with the Canon brand. For optimal monitoring and recording of key moments and details at faraway distances, we offer a wide range of zoom lenses on our network cameras, from the powerful 26x on the VB-C50i/R and VB-C50FSi, to the industry’s most powerful 40x on the VB-C60.

VB-C60, VB-C50i/R, VB-C50FSi

Industry’s Widest Lenses

Featuring the industry’s widest angle lenses for PTZ network video cameras, Canon cameras have horizontal fields of view ranging from 56° on the VB-C60 to an astonishing 82° on the VB-C500D. The broadened visibility offered by these wide lenses ensures expanded monitoring of your location site.

VB-C60, VB-C300, VB-C500D

Auto Focus

Canon’s Auto Focus system achieves smooth and immediate focus while maintaining edge-to-edge tonal accuracy and clarity throughout the entire zoom range. The VB-C60 is equipped with an advanced Auto Focus feature that accomplishes this even faster.

VB-C60, VB-C50i/R, VB-C300, VB-C50FSi, VB-C500D

IMAGING TECHNOLOGY

Smart Shade Control

If the background of an image is too bright to discern the main subjects, you can adjust the contrast of the darker areas to make it easier to see. Unlike backlight compensation, Smart Shade Control adjusts darker areas of the image while maintaining the brightness of the brighter areas, so the background image remains clear without being “blown-out.”

VB-C60, VB-C500D



Three Metering Modes

In order to more accurately set camera exposures, Canon offers three selectable metering modes for measuring the brightness (amount of light) of subjects — a first in this class of network cameras. Choose from “Average”, “Center-Weighted” or “Spot”, depending on given conditions.

VB-C60

Multi-Level Exposure Compensation

For automatic exposure compensation, Canon technology offers distinct levels of correction ranging from three with the VB-C50i/R, VB-C300, to seven with the VB-C60 and VB-C500D. In addition to positive correction for backlit situations, select models provide negative correction, as well, for overly bright conditions. The installer can also set the white balance and the light source to perfectly match the environment.

VB-C60, VB-C50i/R, VB-C300, VB-C50FSi, VB-C500D

Shutter Priority Auto Exposure

This function allows you to select a desired shutter speed, and the camera will then set the matching aperture value for the proper exposure. If you change the shutter speed, or the light level changes, the camera adjusts the aperture value automatically. This is ideal for fast-moving subjects, such as cars in motion, where setting a faster shutter speed will ensure blur-free capture.

VB-C60, VB-C500D

Progressive-Scan CCD Video

Progressive-Scan CCD technology allows for the capture of noiseless, high-quality video of moving subjects. Genuine Canon optics combined with high-sensitivity CCD provides optimal contrast, and primary-color CCD also delivers excellent colors and tonal quality, even in low light.

VB-C60, VB-C300, VB-C500D

Image Stabilization

Canon’s Image Stabilization feature effectively works to compensate for image blur caused by shaking of camera when mounted on ceilings, poles, or other places subject to vibration.

VB-C60

INDUSTRY’S MOST POWERFUL ZOOMS

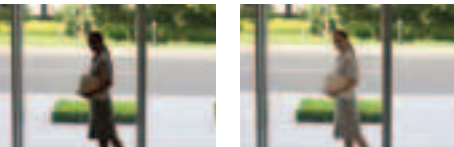


26x zoom 40x (maximum) zoom



1x wide angle

SMART SHADE CONTROL



Original Smart Shade Control

IMAGE STABILIZATION



Original Image Stabilization

PROGRESSIVE-SCAN CCD VIDEO



Interlaced Scan Progressive Scan

Exceptional Low-Light Performance

Canon’s bright lenses combined with high-sensitivity CCD technology, as well as Canon’s proprietary imaging engine, all work together to provide clear visibility of subjects and surroundings even in low-light conditions. In fact, the VB-C500D provides clear colour images in just 0.2 lux of available light, and the VB-C50i/R, VB-C300 and VB-C50FSi in 1 lux.

VB-C60, VB-C50i/R, VB-C300, VB-C50FSi, VB-C500D

Auto Day/Night Capability

The Auto Day/Night feature switches settings automatically when needed for dark night-time conditions. You can select up to five different brightness levels for Auto Day/Night switching, delivering more options for a wider range of environments. Select models are equipped with infrared technology, which allows for exceptional night-time capture. Day/Night switching is done manually on the VB-C50i/R and VB-C50FSi.

VB-C60, VB-C300, VB-C500D

AUTO DAY/NIGHT CAPABILITY



Original Low-light Performance

CAMERA CONTROL & FUNCTIONALITY

PTZ – Pan/Tilt/Zoom

PTZ capability moves the camera right-to-left and up-and-down, making it easy to adjust the angle of view. In many cases, this expands coverage to a full 360° horizontal field of view (pan range ±170°).* The camera’s viewing angle can be easily adjusted via software, and images remain exceptionally clear and blur-free during PTZ movement.

*The VB-C50i/R has a pan range of ±100°.

VB-C60, VB-C50i/R, VB-C300, VB-C50FSi, VB-C500D

Motion Detection with Subject Auto-Tracking

Motion detection capability enables you to set up to four motion detection areas, each with varying levels of sensitivity. When subject motion (a change in pixels) is detected, the camera can be set to pan and tilt to follow the subject’s movement. Pre-recorded audio can also be set to playback on cue. The VB-C50FSi has motion detection capabilities without the auto-tracking feature.

VB-C60, VB-C50i/R, VB-C300,

Sensor & Alarm Trigger

The VB-C60, VB-C300 and VB-C500D are equipped with built-in terminals for connecting various external devices such as sensors and alarms. An optional adaptor is needed to perform this function with the VB-C50i/R and VB-C50FSi.

VB-C60, VB-C300, VB-C500D

Image Upload & E-mail Notification

When a subject’s motion is detected, or if an external sensor is triggered, the VB-C60, VB-C500D, VB-C50i/R, and VB-C50FSi can automatically send the images to any desired location via e-mail – even to a mobile phone, PDA, or other portable e-mail address. The VB-C60 can also be set to upload these images to a website. With all four cameras, pre-recorded audio can be set to playback on site.

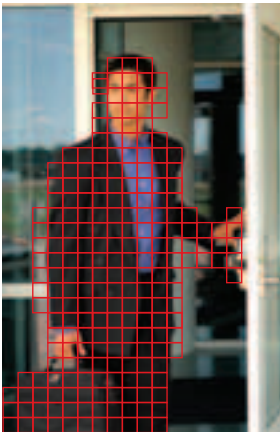
VB-C60, VB-C50i/R, VB-C50FSi, VB-C500D

Multiple Audio Functions

Advanced audio features allow for real-time audio transmission, both to and from an authorized network PC. Full duplex, two-way audio allows administrators who are logged into the Administration Viewer interface to listen in on a camera site, make announcements to that scene, or do both at the same time. Pre-recorded audio can also be set to play back when triggered by an event, such as motion detection. An optional adaptor is needed to accomplish this with the VB-C50i/R and VB-C50FSi.

VB-C60, VB-C50i/R, VB-C50FSi, VB-C500D

E-MAIL >>> ALARM



Motion detection and alarm features may notify you of an event via PDA or cell phone.





DIGIC NET

DATA ENCODING & TRANSMISSION

Powerful DIGIC NET Processor

DIGIC NET is a powerful, proprietary, hardware-based compression engine that performs all image processing and encoding. Many cameras process or encode images via PC software, which expends extensive CPU capacity and results in lowered frame rate. With DIGIC NET, each step of the imaging process — capturing, processing, encoding and transmitting — uses virtually zero CPU capacity.

VB-C60, VB-C500D

Simultaneous Data Distribution

With simultaneous data distribution, image capture can be delivered in both M-JPEG and MPEG-4 video, and in high-quality VGA size (640 x 480 pixels), all at the maximum frame rate of 30fps. The high-image quality of M-JPEG video is ideal for live monitoring, while the MPEG-4 format is better suited for recording, due to its smaller file size and lighter network load. Up to 30 simultaneous users can access and view video images at the same time.

VB-C60, VB-C500D

Multi-Streaming

Cameras with the multi-streaming feature can distribute JPEG images in three sizes simultaneously. The smallest size, 160 x 120, is used for cell phones or PDAs. The 320 x 240 middle size proves useful when monitoring multiple cameras on a single screen. And the larger size, 640 x 480, is ideal for storing high-resolution images.

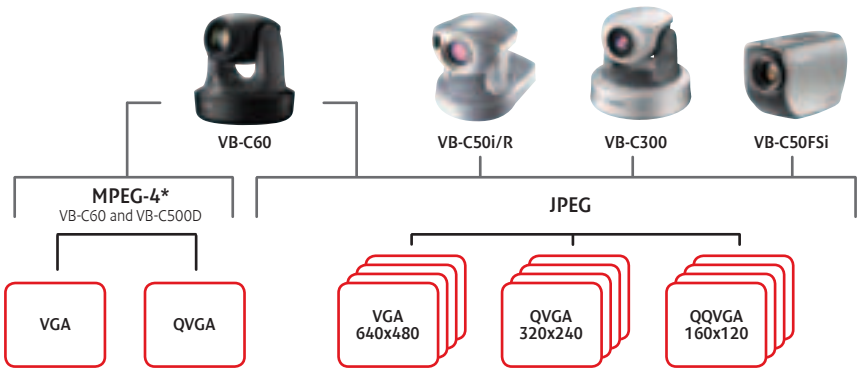
VB-C60, VB-C50i/R, VB-C50FSi, VB-C500D

Recorded Stream Functionality – Only available with Canon

In addition to basic live video streaming, Canon lets you stream recorded video. This feature is useful when recorded images are viewed after the fact (rather than live), because it greatly minimises the chance of experiencing dropped frames due to data transmission interruptions caused by network congestion. This feature lets the camera buffer, save, and restore missing frames (up to 10fps, up to 1 minute) when the congestion is alleviated. When recorded video is later played back, all frames are included at the proper frame rate.

VB-C60

POWERFUL DATA TRANSMISSION CAPABILITIES



SECURITY

IPsec Support

IPsec, or IP security, is a set of protocols for encrypting data streams to secure IP communications. IPsec secures the data flow to and from the camera, and permits access only to authorized users.

VB-C60

User Access Restriction

User access restriction provides three levels of user access to ensure maximum but customisable security. In addition to the Administrator, who has control over the entire system, other users on the system can be divided into registered (authorised) users and general (anonymous) users. Each type of user has access to different monitoring functions and camera controls as specified by the Administrator. Since the general user level doesn't require registration, it is well-suited for Web casting applications.

VB-C60

CONNECTIVITY & INSTALLATION

PoE (Power over Ethernet)

Canon's Power over Ethernet (PoE) technology with IEEE802.3af Compliance allows the use of a single LAN cable to both power the camera and transfer video and audio data when connected to a PoE midspan or switch. Because a power cable is not required, the camera can be installed at sites without readily accessible AC outlets. And, because PoE eliminates the cost of running expensive power cabling to the device, installation costs are kept to a minimum.

VB-C60, VB-C300, VB-C50FSi, VB-C500D

Built-in Reverse Camera Modes

The VB-C60 and VB-C300 have a built-in reverse mode, giving the installer more flexible options for achieving optimal coverage when working in challenging physical locations. The VB-C50i has a convenient "R" version for reverse mounting. Canon also offers a host of mounting options and accessories to facilitate installation for its entire line of Network Video Solutions.

VB-C50i, B-C60, VB-C300

BUNDLED SOFTWARE

Viewer and Administration Tools

The proprietary software engines that drive Canon's Network Video Solutions are designed to maximise user control and to customize camera operation, addressing the unique surveillance and recording challenges of every application. Canon offers a wide range of software options to satisfy your diverse image capture requirements. Some come packaged with our cameras, and others can be integrated separately.

VB-C60, VB-C50i/R, VB-C300, VB-C50FSi

• Panorama Image Creation Tool

This useful tool creates a single image that displays the full field of view of the camera's capture area.

VB-C60, VB-C50i/R, VB-C300

• View Restriction Tool

Set restrictions on the pan/tilt/zoom range (VB-C60 and VB-C50i/R) or zoom range (VB-C50FSi) that is accessible by viewers.

VB-C60, VB-C50i/R, VB-C50FSi

• Preset Setting Tool

Administrator can appoint up to 20 preset viewing angles. Once registered, clicking on a preset automatically moves the camera to a desired position for immediate monitoring.*

*The VB-C50FSi only offers 10 zoom presets.

VB-C60, VB-C50i/R, VB-C300, VB-C50FSi

• Schedule Setting Tool

Provides the ability to set up Timer, Motion Detection, Night Mode, External Device Input, and External Device Output services to automatically perform on a specified day of the week or at a certain time of day.

VB-C50i/R, VB-C50FSi

• Log Viewer

This function gives the Administrator greater control by allowing for viewing and searching of the camera activity log file.

VB-C60, VB-C50i/R, VB-C300, VB-C50FSi

• Viewer for Administrators

Features special privilege functions such as exclusive access to camera control functions, and external device and motion detection operation.

VB-C60, B-C50i/R, VB-C300, VB-C50FSi

• NC Viewer

Permits viewing of live video images from the network camera and features an easy-to-use interface for controlling camera functions such as PTZ. There are two viewing modes, one for a regular user and one for an administrator.

VB-C300

• VK-Lite v2.0 Software

Gives administrator the ability to monitor, record, and play back images from up to four cameras on a single screen. This software is included with the VB-C60.

VB-C60

• Preset Tour Capabilities

Lets administrator establish a tour of preset locations with specified times and varying intervals for the system to cycle through

VB-C60, VB-C50i/R

VB ADMINISTRATION TOOLS

Schedule Setting Tool



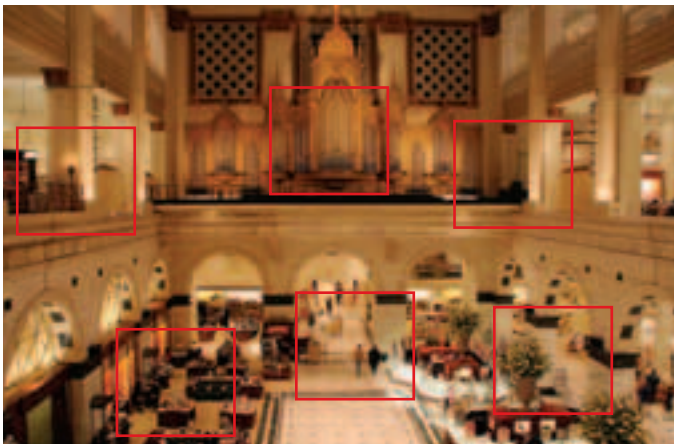
Motion Detecting Setting Tool



Panorama Creation Tool



View Restriction Setting Tool



Smart Software: Brilliant Capabilities.

VK-64 | NETWORK VIDEO MONITORING & RECORDING SOFTWARE

Item Code: 3099B001

For large-scale, multi-location operations in which you can utilise up to 64 Canon network cameras, choose our VK-64 Network Video Monitoring & Recording Software. In addition to a variety of easy-to-use image and camera control functions, you'll find many unique features that set Canon software apart.

- Camera Control**
Take control of each camera directly from the live video window, or use the convenient camera control panel for quick and easy control.
- Smart Shade Control**
Smart Shade Control enables you to fine-adjust background brightness and contrast, so you can see your main subjects more clearly in the foreground.
- Remote Monitoring & Recording**
Using an IP network, you can record captured video from a remote camera server, and then use this recorded content as a crucial off-site backup.
- Customisable Viewing Screens**
Customise the quantity, size and placement of image windows in the image display area to set up viewing formats that best suit your needs. (See image on page 11.)
- Simultaneous Image Display & Playback**
With an SXGA monitor, up to 35 screens of live or recorded images can be displayed or played back simultaneously.

Camera Control



Recording Settings



VK-16 | NETWORK VIDEO MONITORING & RECORDING SOFTWARE

Item Code: 3099B002

For smaller operations, there's our VK-16 Network Video Monitoring & Recording Software. It covers all the functionality of our VK-64 solution, but does so for up to 16 network cameras only.

VK-Lite | NETWORK VIDEO MONITORING & RECORDING SOFTWARE

Item Code: 3331B001

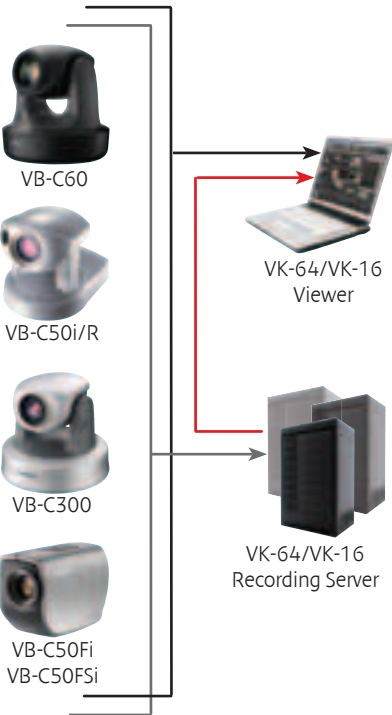
With setups requiring basic monitoring, recording and playback capability for no more than four network cameras, Canon offers the VK-Lite Network Video Monitoring & Recording Software. VK-Lite comes bundled with our VB-C60 camera.

VK Viewer | NETWORK VIDEO & MONITORING SOFTWARE

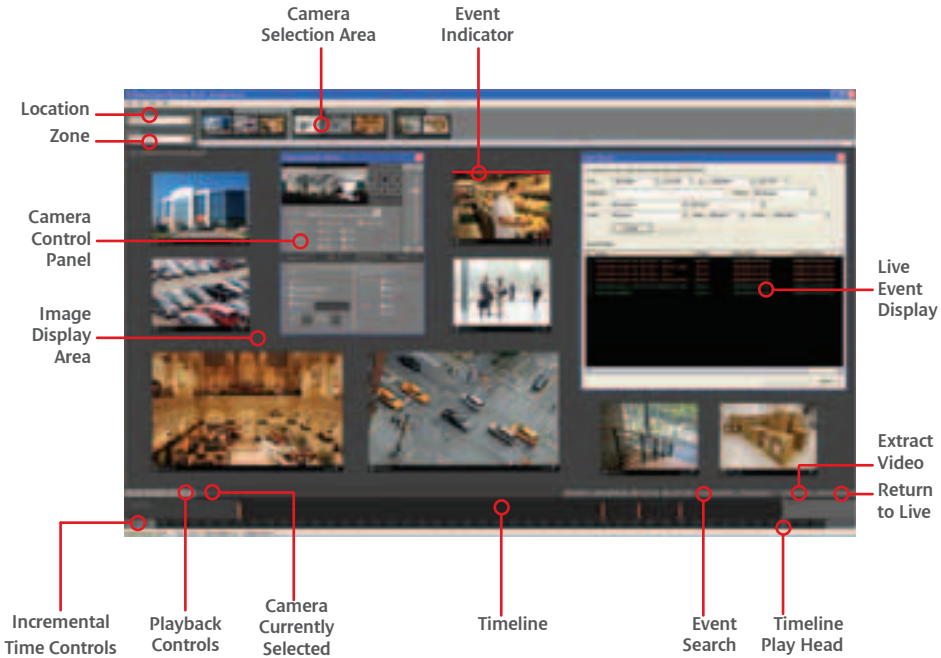
Item Code: 1-license 3099B003 / 5-license 3099B004

For those that only require viewing capability, the VK Viewer displays exactly what you need to see, allowing you to monitor several cameras on one screen. Size and arrange multiple video windows for easy monitoring. Can also be used to access VK-64/16 storage servers.

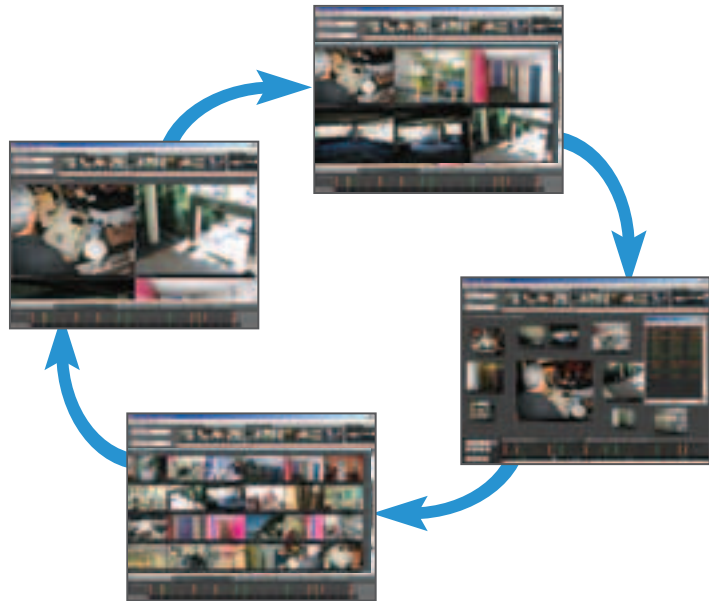
VK-64 / VK-16 RECORDING SOFTWARE



CUSTOMISABLE VIEWING SCREENS



AUTOMATIC LAYOUT SWITCHING



Choose Canon and Witness the Difference.

Clear, crisp video capture for monitoring, recording and playback. Superior camera and image management for maximum system performance. Remote or onsite viewing and control of multiple images at once. Choose Canon Network Video Solutions and witness the difference yourself.

Canon

CAPACITY CHART

NO. OF CAMERAS	IMAGE SIZE	FRAME SIZE	NETWORK TRAFFIC		STORAGE VOLUME	
			FPS	CAPACITY	1 DAY	1 MONTH
1	320x240	15kb	1fps	120kbps	1GB	37GB
			5fps	600kbps	6GB	187G
	640x480	50kb	1fps	420kbps	4GB	122GB
			5fps	2Mbps	20GB	608GB
10	320x240	15kb	1fps	1.2Mbps	12GB	373GB
			5fps	6Mbps	62GB	1,866GB
	640x480	50kb	1fps	4Mbps	41GB	1,216GB
			5fps	20Mbps	203GB	6,081GB

Extend System Value with Flexible Options & Accessories.

Every application poses unique installation and system integration challenges, but Canon has prepared for all contingencies with an expansive set of options and accessories. Talk about flexibility. Installers will find all they need and more to ensure smooth, hassle-free, cost-efficient installations – and that includes a knowledgeable technical support team that backs up every system.

EXPANSION BOX

VB-EX50
Multi Terminal Module
Item Code: 9783A003AA



The Multi Terminal Module VB-EX50 enables connection of various types of external devices to the VB-C50i/R and VB-C50FSi.

- Audio In for microphone
- Audio Out for speakers
- Video In/Out (BNC) for analog video cameras already in use
- External Sensor In/Out for sensors and alarms

WIDE CONVERTER

WL-37
Wide Converter Lens
Item Code: 4674A001AA



A wider angle of image capture can be achieved by attaching the optional Wide Converter WL-37 to the VB-C50i/ VB-C50FSi. This option is useful when the camera is installed too close to the area that requires monitoring.

- Lens magnification: 0.74x
- Expands field-of-view to 65°

For safety reasons, this optional item cannot be used with ceiling-mounted models

AC ADAPTORS

PA-V17
AC Adaptor
Item Code: 2245B001AA



AC adaptor for the VB-C60, VB-C300 and VB-C500D.

- Input: 100-240 V AC 50/60Hz
- Output: 13V DC 1.8 A (max.)
- Dimension: 2.28in. x 4.65in. x 0.98in. (W x D x H)
- Weight: Approx. 0.47 lb.

PA-V16
AC Adaptor
Item Code: 6588A001AA



AC adaptor for the VB-C50i/R and VB-C50FSi.

- Input: 100-240 V AC 50/60Hz
- Output: 13V DC 1.8 A (max.)
- Dimension: 2.28in. x 4.65in. x 0.98in. (W x D x H)
- Weight: Approx. 0.50 lb.

DOMES FOR VB-C60

VB-RD51S-S
Indoor Dome Housing (Smoked)
Item Code: 2823B001AA



The optional ultra-compact smoked dome housing designed for the VB-C60 can be used for indoor recessed ceiling installation. The dome can help minimise the appearance of the camera, and protect the camera from dust. With a diameter of just 5.24 inches, the new domes still allow for smooth full-range PTZ movement. The smoked dome is approximately 50% transparent compared to the clear dome.

- User Environment:
Temperature: 14 to 122°F
Humidity: 20 to 85% RH (no condensing)
- Dimensions:
Entire Unit: 8.27 x 7.0in. (D x H)
Dome Portion: 5.24 x 3.7in. (D x H)
- Weight: 1.151 lb. (excluding the camera)

VB-RD51S-C
Indoor Dome Housing (Clear)
Item Code: 2823B002AA



The optional ultra-compact clear dome housing designed for the VB-C60 can be used for indoor recessed ceiling installation. The dome can help minimise the appearance of the camera, and protect the camera from dust. With a diameter of just 5.24 inches, the new domes still allow for smooth full-range PTZ movement. The clear dome is 100% transparent.

- User Environment:
Temperature: 14 to 122°F
Humidity: 20 to 85% RH (no condensing)
- Dimensions:
Entire Unit: 8.27 x 7.0in. (D x H)
Dome Portion: 5.24 x 3.7in. (D x H)
- Weight: 1.151 lb. (excluding the camera)

DOMES FOR VB-C300

VB-RD41S-S
Indoor Dome Housing (Smoked)
Item Code: 2112B001AA



The optional ultra-compact smoked dome housing designed for the VB-C300 can be used for indoor recessed ceiling installation. The dome can help minimise the appearance of the camera, and protect the camera from dust. With a diameter of just 4.33 inches, the new domes still allow for smooth full-range PTZ movement. The smoked dome is approximately 50% transparent compared to the clear dome.

- User Environment:
Temperature: 32 to 113°F
Humidity: 20 to 85% RH (no condensing)
- External Dimensions:
Entire Unit: 7.20 x 5.86in. (D x H)
Dome Portion: 4.33 x 3.26in. (D x H)
- Weight: 0.82 lb. (excluding the camera)

VB-RD41S-C
Indoor Dome Housing (Clear)
Item Code: 2112B004AA



The optional ultra-compact clear dome housing designed for the VB-C300 can be used for indoor recessed ceiling installation. The dome can help minimise the appearance of the camera, and protect the camera from dust. With a diameter of just 4.33 inches, the new domes still allow for smooth full-range PTZ movement. The clear dome is 100% transparent.

- User Environment:
Temperature: 32 to 113°F
Humidity: 20 to 85% RH (no condensing)
- External Dimensions:
Entire Unit: 7.20 x 5.86in. (D x H)
Dome Portion: 4.33 x 3.26in. (D x H)
- Weight: 0.82 lb. (excluding the camera)

COVER FOR VB-C60

SS60-B-VB
Ceiling Mount Cover
Item Code: 3121B002AA



The SS60-B-VB ceiling mount cover is designed to fit around the VB-C60. The ceiling mount cover helps to minimize the appearance of the camera.

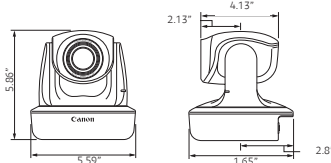
- Dimensions: 7.72in. x 1.61in. (H)
- Weight: 0.598 lb. (excluding the camera)

ACCESSORY COMPATIBILITY CHART

	VB-C60	VB-C50i	VB-C50iR	VB-C300	VB-C50FSi	VB-C500D
Wide Converter Lens WL-37		•			•	
Multi-Terminal Module VB-EX50		•	•		•	
AC Adaptor PA-V17	•			•		•
AC Adaptor PA-V16		•	•		•	
Indoor Recessed Dome (Smoked) VB-RD51S-S	•					
Indoor Recessed Dome (Clear) VB-RD51S-C	•					
Indoor Recessed Dome (Smoked) VB-RD41S-S				•		
Indoor Recessed Dome (Clear) VB-RD41S-C				•		
Ceiling Mount Cover SS60-B-VB	•					
Recessed Mounting Kit SR500-S-VB						•
I/O Interface cable WC500-VB						•
Power Interface Cable WC500-VB						•
Audio Interface Cable WA500-VB						•

MEASUREMENT CHART

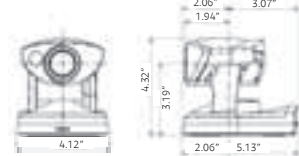
VB-C60



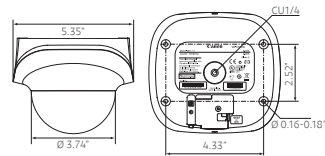
VB-C50FSi



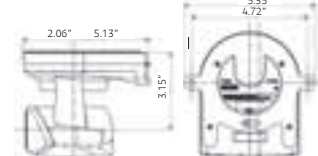
VB-C50i



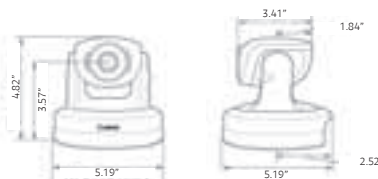
VB-C500D



VB-C50iR

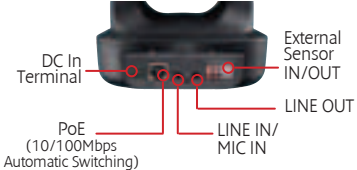


VB-C300

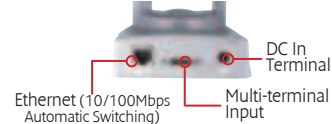


CONNECTIVITY

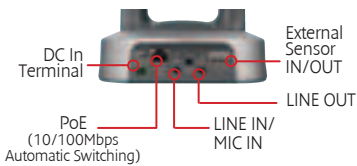
Rear view of VB-C60



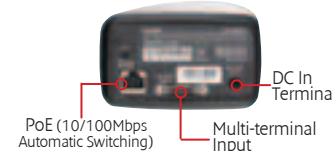
Rear view of VB-C50i



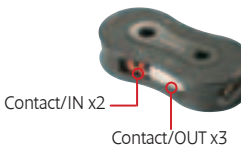
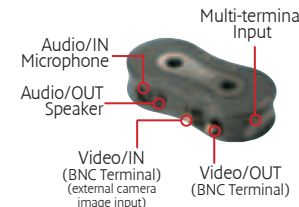
Rear view of VB-300






Rear view of VB-C50FSi



VB-EX50 Multi-Terminal



SPECIFICATIONS NETWORK CAMERAS

					
Network Cameras	VB-C60	VB-C50i / VB-C50iR	VB-C300	VB-C50FSi	VB-C500D
Product Class	PTZ Network Camera	PTZ Network Camera	PTZ Network Camera	Fixed Network Camera	Fixed Dome Network Camera
IMAGE SENSOR					
Type	1/4 inch CCD with primary colour filter	1/4" CCD	1/4" CCD with primary colour filter	1/4" CCD	1/4 inch CCD with primary colour filter
Number of Pixels	310,000 effective	400,000 effective	310,000 effective	400,000 effective	310,000 effective
Scanning System	Progressive	2:1 Interlaced	Progressive	2:1 Interlaced	Progressive
OPTICS					
Zoom Magnification and Control	40x Powered Zoom Lens	26x Powered Zoom Lens	2.4x Powered Zoom Lens	26x Powered Zoom Lens	2.4x Powered Zoom Lens
Focal Length	3.4mm (wide) ~ 136.0mm (telephoto)	3.5mm (wide) ~ 91mm (telephoto)	3.0mm (wide) ~ 7.2mm (telephoto)	3.5mm (wide) ~ 91mm (telephoto)	2.6mm (wide) ~ 6.2mm (telephoto)
Horizontal Field of View	55.8° (wide) - 1.5° (telephoto)	41.0° (wide) - 2° (telephoto)	70.8° (wide) - 29.6° (telephoto)	41.0° (wide) - 2° (telephoto)	82.0° (wide) - 34.0° (telephoto)
Lens F-Number	f/1.6 ~ f/5.6	f/1.6 - f/4.0	f/2.0 - f/3.4	f/1.6 - f/4.0	f/1.1 - f/1.4
Minimum Subject Illumination	Day Mode: 0.7 lux (Colour, f/1.6 at 1/30 sec)* Night Mode: 0.2 lux (Mono, f/1.6 at 1/30 sec)*	Day Mode: 1 lux (Colour, at 1/30 sec shutter) Night Mode: 0 lux (Mono, at 1/30 sec, IR illuminator ON)	Day Mode: 1 lux (Colour, at 1/30 sec shutter speed) Night Mode: 0.25 lux (Mono, at 1/30 sec shutter speed)	Day Mode: 1 lux (Colour, at 1/30 sec shutter)	Day Mode: 0.2 lux (Colour, f/1.1 at 1/30 sec, SSC on)** Night Mode: 0.1 lux (Mono, f/1.1 at 1/30 sec, SSC on)**
Focus Control	Auto / Manual / One-Shot AF / Fixed at Infinity (for dome)	Auto / Manual / Fixed at Infinity / Auto (Dome Mode)	Auto / Manual / Fixed at Infinity / Auto (Dome Mode)	Auto / Manual / Fixed at Infinity / Auto (Dome Mode)	Manual
Focusing Region	Day Mode: 0.3m ~ infinity / Night Mode: 0.5m - infinity	Day Mode: 0.01m ~ infinity / Night Mode: 0.02m - infinity	Day Mode: 0.3m ~ infinity / Night Mode: 0.6m - infinity	Day Mode: 0.01m ~ infinity / Night Mode: 0.02m - infinity	0.7m ~ infinity
Shutter Speed	1/1 - 1/8000 sec	-	-	-	1/1 - 1/8000 sec
White Balance	Auto / Manual Preset / Lock (One-Shot)	Auto / Manual Preset / Lock (One-Shot)	Auto / Manual Preset / Lock (One-Shot)	Auto / Manual Preset / Lock (One-Shot)	Auto / Manual Preset / Lock (One-Shot)
Imaging Modes	Day Mode, Night Mode (Auto / Manual / Scheduled)	Day Mode, Night Mode (Manual / Scheduled)	Day Mode, Night Mode (Auto / Manual / Scheduled)	Day Mode, Night Mode (Manual / Scheduled)	Day Mode, Night Mode (Manual / Scheduled)
Metering Modes	Centre-Weighted / Average / Spot Metering	-	-	-	Centre-Weighted / Average / Spot Metering
IR Illuminator Type and Range	-	4 x Infrared LEDs, 3m effective range	-	-	-
Image Stabilizer	Electronic (ON1 / ON2 / OFF)	-	-	-	-
SERVER UNIT					
Video Compression Method	Motion-JPEG (video), MPEG4, JPEG (still images)	Motion-JPEG (video), JPEG (still images)	Motion-JPEG (video), JPEG (still images)	Motion-JPEG (video), JPEG (still images)	Motion-JPEG (video), MPEG4, JPEG (still images)
Video Output Size	MJPEG: 640 x 480 / 320 x 240 / 160 x 120 (multicast) MPEG4: 640 x 480 / 320 x 240 (fixed size)	768 x 576 / 384 x 288 / 192 x 144 pixels	640 x 480 / 320 x 240 / 160 x 120 pixels	768 x 576 / 384 x 288 / 192 x 144 pixels	MJPEG: 640 x 480 / 320 x 240 / 160 x 120 (multicast) MPEG4: 640 x 480 / 320 x 240 (fixed size)
Frame Rate	MJPEG: 0.1 fps - 30 fps (max) / MPEG4: 10 / 15 / 30 fps	0.1fps - 25 fps (max)	0.1fps - 25 fps (max)	0.1fps - 25 fps (max)	MJPEG: 0.1 fps - 30 fps (max) / MPEG4: 10 / 15 / 30 fps
Simultaneous Distribution	MJPEG: 30 clients max / MPEG4: 10 clients max	50 clients	5 clients at 25 fps / 15 clients (max) at 10 fps	50 clients	MJPEG: 30 clients max / MPEG4: 10 clients max
Audio Compression Method	G.711 µ-law (64Kbps), Full duplex	G.711 µ-law (64Kbps), Full duplex	G.711 µ-law (64Kbps), Full duplex	G.711 µ-law (64Kbps), Full duplex	G.711 µ-law (64Kbps), Full duplex
Supported Protocols	IPv4 and IPv6: TCP/IP, UDP, HTTP, FTP, SNMP (MIB2), SMTP (client), DHCP (IPv4 only), DNS (client), ARP, ICMP, POP3, NDP (IPv6 only), NTP, SMTP authentication, WV-HTTP (Canon)	TCP/IP, HTTP, DHCP, FTP, WebView (Canon)	HTTP, DHCP, WV-HTTP (Canon)	TCP/IP, HTTP, DHCP, FTP, WebView (Canon)	IPv4 and IPv6: TCP/IP, UDP, HTTP, FTP, SNMP (MIB2), SMTP (client), DHCP (client - IPv4 only), DNS (client), ARP, ICMP, POP3, NDP (IPv6 only), NTP (IPv4 only), SMTP authentication, WV-HTTP (Canon)
Camera Access Levels	Administrator, Authorised User, Guest User				Administrator, Authorised User, Guest User
Motion Detection	Yes	Yes (with Auto Tracking)	No	Yes	Yes
Internal Memory Buffer	6MB	14MB	None	14MB	6MB
Event Notification	Yes (HTTP / SMTP protocols)	Yes (HTTP / SMTP protocols)	Yes (HTTP / SMTP protocols)	Yes (HTTP / SMTP protocols)	Yes (HTTP / SMTP protocols)
CONNECTORS					
Network Interface	RJ-45 Ethernet, 10/100TX Auto-Negotiation	RJ-45 Ethernet, 10/100TX Auto-Negotiation	RJ-45 Ethernet, 10/100TX Auto-Negotiation	RJ-45 Ethernet, 10/100TX Auto-Negotiation	RJ-45 Ethernet, 10/100TX Auto-Negotiation
Composite Video Output	-	Via optional VB-EX50 Multi-Terminal Module	3.5mm mini-jack	Via optional VB-EX50 Multi-Terminal Module	-
Audio Input (Line In)	3.5mm mini-jack	-	3.5mm mini-jack	-	Via optional Audio Interface Cable: 3.5mm mini-jack
Audio Output (Line Out)	3.5mm mini-jack	Via optional VB-EX50 Multi-Terminal Module	3.5mm mini-jack	Via optional VB-EX50 Multi-Terminal Module	Via optional Audio Interface Cable: 3.5mm mini-jack
External Devices	Built-in 8-pin multi-connector: 2 x Inputs / 2 x Outputs	Via optional VB-EX50 Multi-Terminal Module	Built-in 6-pin multi-connector: 2 x Inputs / 1 x Output	Via optional VB-EX50 Multi-Terminal Module	Via optional I/O Cable: 2x Inputs, 2x Outputs
MECHANISMS					
Pan Angle Range	340° (-170° to +170°)	VB-C50i: 200° / VB-C50iR: 340°	340° (-170° to +170°)	-	-
Tilt Angle Range	115° (Upright: -25° to +90° / Ceiling: -90° to +25°)	VB-C50i: 120° / VB-C50iR: 100°	115° (-25° to +90°)	-	-
Maximum Rotation Speed	Pan: 150° per sec / Tilt: 150° per sec	Pan: 90° per sec / Tilt: 70° per sec	Pan: 90° per sec / Tilt: 70° per sec	-	-
Infrared Cut Filter	Power-driven insertion and removal (Day / Night Modes)	Power-driven insertion and removal (Day / Night Modes)	Power-driven insertion and removal (Day / Night Modes)	Power-driven insertion and removal (Day / Night Modes)	Manual Day / Night switching
Preset Positions	20 presets (Pan, Tilt, Zoom)	20 preset positions (Pan, Tilt, Zoom)	20 preset positions (Pan, Tilt, Zoom)	10 preset positions (Zoom only)	-
RATINGS					
Dimensions (W x H x D)	142mm x 149mm x 142mm	VB-C50i: 105mm x 109mm x 130mm VB-C50iR: 136mm x 111mm x 130mm	132mm x 122mm x 130mm	66mm x 97mm x 134mm	136mm x 108mm x 148mm
Weight	840g	VB-C50i: 620g / VB-C50iR: 700g	780g / 975g with ceiling mounting hardware	480g	600g
Power over Ethernet Compatible	Yes (Conforms to IEEE 802.3af)	No	Yes (Conforms to IEEE 802.3af)	Yes (Conforms to IEEE 802.3af)	Yes (Conforms to IEEE 802.3af)
Power Sources	100V ~ 240V AC, 50/60Hz (via optional AC Adaptor) 12V DC or 24V AC (via supplied two-pin connector) - Power over Ethernet (via RJ-45 connector)	100V ~ 240V AC, 50/60Hz (via supplied AC Adaptor) 13V DC (via DC barrel connector) -	100V ~ 240V AC, 50/60Hz (via optional AC Adaptor) 12V DC or 24V AC (via supplied two-pin connector) Power over Ethernet (via RJ-45 connector)	100V ~ 240V AC, 50/60Hz (via optional AC Adaptor) 13V DC (via DC barrel connector) Power over Ethernet (via RJ-45 connector)	100V ~ 240V AC, 50/60Hz (via optional AC Adaptor) 12V DC or 24V AC (via optional Power Interface Cable) Power over Ethernet (via RJ-45 connector)
Power Consumption	10W Max (on PoE) / 13W Max (on AC Adaptor)	14W Max	10W Max (on PoE) / 13W Max (on AC Adaptor)	12.95W Max	3.3W Max (on PoE) / 3.5W Max (on AC Adaptor)
Operating Environment	Temperature: -10°C to +50°C, Humidity: 20% to 85% RH	Temperature: 0°C to +40°C, Humidity: 20% to 85% RH	Temperature: -10°C to +45°C, Humidity: 20% to 85%RH	Temperature: 0°C to +40°C, Humidity: 20% to 85%RH	Temperature: -10°C to +50°C, Humidity: 20% to 85% RH

* Use of the optional VB-RD415-S 'Smoked Indoor Recessed Ceiling Dome Housing' with the VB-C300 increases the minimum required illumination to 2 lux in Day Mode and 0.5 lux in Night mode
** SSC = Smart Shade Control. Disabling this function increases minimum illumination requirements to 0.5 lux in Day Mode and 0.2 lux in Night mode

SPECIFICATIONS NETWORK VIDEO MONITORING & RECORDING SOFTWARE

Network Video Monitoring & Recording Software	VK-64 / VK-16
Product Class	Network Video Recording Software
SUPPORTED EQUIPMENT	
Compatible Network Cameras	Canon VB-C60 / VB-C50i(R) / VB-C300 / VB-C500D / VB-C50FSi / VB-C50Fi / VB-C10 / VB-C10R
Compatible Camera Servers	Canon VB150 / VB101
No of Storage Servers per client	Maximum 3 Servers
No of Viewer sessions to Server	Maximum 5 simultaneous viewers
RECORDING SPECIFICATION	
Number of Inputs	Maximum 64 video inputs (VK-64) Maximum 16 video inputs (VK-16)
Resolution of Recorded Image	192 x 144 pixels (min) - 768 x 576 pixels (max)
Recording Media	Hard Disk Drive (local)
Maximum Supported Capacity	9999 GB, subject to attached storage hardware
Frame Rate of Recorded Image	25 frames per second (max)
Selectable Recording Modes	Scheduled, Sensor Event, Motion Detection Pre-Event Recording (max 30 seconds at 25 fps) Post-Event Recording (max 999 seconds at 25 fps)
DISPLAY - COMMON	
Number of Video Windows	Maximum 24 separate windows (XGA display required)
Layout Sequencer	Supported
Full Screen Video	Supported
Task Area	Can be shown or hidden as required
DISPLAY - VIDEO PLAYBACK	
Playback while Recording	Yes: simultaneous playback and recording
Monitoring while Recording	Yes: watch live footage during recording
Rewind / Fast Forward Search	2x, 5x, 10x search speeds
Search Options	Date and Time Event Priority and Type Location or Zone
DISPLAY - CONTROL	
PTZ Camera Control	Supported on all compatible Canon Network cameras
Preset Tour	Yes
Event Notification	Yes
External Device Output Control	Yes
IMAGE ENHANCEMENT	
Support for Night Mode	Yes, on compatible Canon Network cameras Includes Infrared cut filter and on-board IR illuminator
Backlight Compensation	3 levels
Multi-streaming	Yes
Shade Correction	Video Playback - Yes Monitoring Live Video - Yes
EXTRACTION FACILITIES	
Video Export Formats	QuickTime™ moving image file format (.MOV)

NOTICE ABOUT THE MPEG-4 VISUAL STANDARD: THIS PRODUCT IS LICENSED UNDER THE MPEG-4 VISUAL PATENT PORTFOLIO LICENSE FOR THE PERSONAL AND NON-COMMERCIAL USE OF A CONSUMER TO (i) ENCODING VIDEO IN COMPLIANCE WITH THE MPEG-4 VISUAL STANDARD ("MPEG-4 VIDEO") AND/OR (ii) DECODING MPEG-4 VIDEO THAT WAS ENCODED BY A CONSUMER ENGAGED IN A PERSONAL AND NON-COMMERCIAL ACTIVITY. NO LICENSE IS GRANTED OR SHALL BE IMPLIED FOR ANY OTHER USE. ADDITIONAL INFORMATION INCLUDING THAT RELATING TO PROMOTIONAL, INTERNAL AND COMMERCIAL USES AND ADDITIONAL LICENSING MAY BE OBTAINED FROM MPEG LA, LLC. SEE [HTTP://WWW.MPEGLA.COM](http://www.MPEGLA.COM).

Specifications are subject to change without notice. Weight and dimensions are approximate. Images are simulated. Canon and ImageANYWARE are registered trademarks of Canon Inc. in the United States and may also be registered marks in other countries. Microsoft and Windows are either registered trademarks or trademarks of the Microsoft Corporation in the United States and/or other countries. Other names and products not mentioned above may be registered trademarks or trademarks of their respective companies. Warning: Unauthorized recording of copyrighted materials may infringe on the rights of copyright owners and be contrary to copyright laws.