

redcare i-witness is a CCTV networked digital storage and footage retrieval solution that has been specifically designed to meet the rigours of today's CCTV control rooms.

Great For:

Control rooms with storage systems that are becoming obsolete or that are failing to meet the increasing demands of the police.

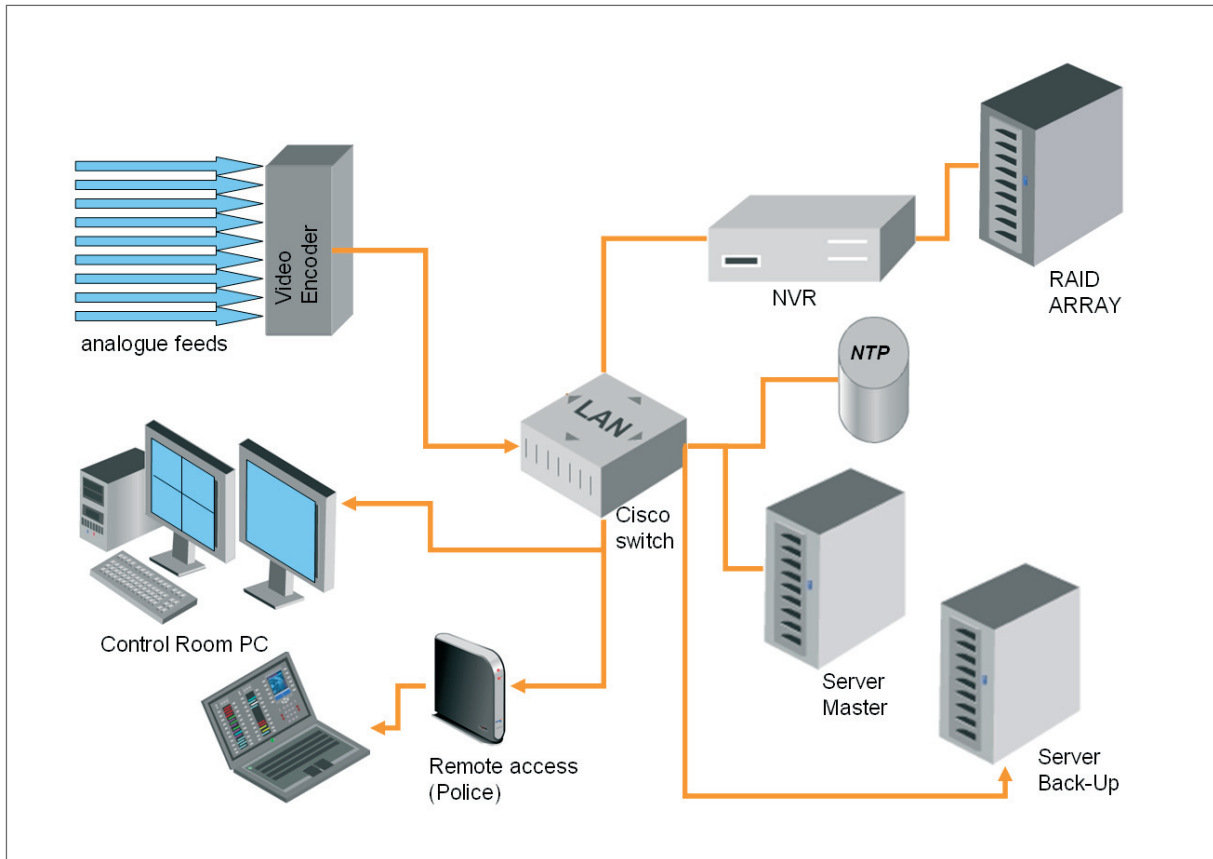
Highlights:

- Fully auditable, encrypted and secure solution. Helps control rooms meet the requirements of the Criminal Justice System.
- High quality images can be recorded at variable CIF and frame rates on a camera by camera basis, saving on storage space.
- Modular and scalable, control rooms can easily expand or increase resilience as and when required.
- Easy to use, intuitive solution that offers many time-saving and image enhancing features.

Specification:

Video encoding	
Number of video inputs	Customer defined
Video input signal format	Composite PAL
Digital sampling structure	4:2:0
Video encoding and compression algorithm	MPEG 4 SP, ISO/IEC14496-2
Video resolution	CIF (356X288) or 2CIF (704x288) or 4CIF (704 x 576)
Group of pictures (GOP) structure	I frames / P Frames
Frames per second (FPS)	1 to 25 FPS
Video Authentication	MD5 encryption checksum applied to exported video sequence. Time stamp in HH/MM/SS DD/MM/YYYY format and camera name and address identification applied
Audit trail	Four levels of user access: Super administrator, Administrator, Reviewer and Operator
Video storage	
Type of storage	Customer scaled, RAID 5 storage with optional RAID mirror
Storage period	Customer defined (28 days typically). Automatic file delete at end of storage period
Switching	
Network switching	10/100 network switching with Ethernet ports
i-witness client workstation	
Video playback display	Matrix of 1, 2x2 & selectable full-screen, each player area with own player controls (play, pause, rewind, fast forward etc)
Video search facility	Based on date and time, camera name, camera number or camera location
Still image tools	Zoom, contrast enhance, image negative, image sharpen, object masking, rotation and blur adjustment
Clipboard	Collection area for still images, video footage with facility to burn to DVD+R. All actions recorded in audit trail. DVD burning with MD5 encryption with user defined password
Email	Integrated email facility allows the user to email video footage and still images to another remote address or mobile device such as a PDA
Map	GIS compatible map facility with camera location
Printer	Integrated printing facility allows the user to print direct from client workstation or network printer
Camera control	Independent on screen 'joystick' style camera direction and focus control facility (compatible with many protocols)
Administration	
Time server	Dual redundant GPS (with externally mounted antenna) and internal system clock
Operating system	Encoding Servers (Linux), DVR (Embedded Windows), Playback Station (Embedded Windows)
Data Base Server	SQLite located on DVR
System maintenance monitoring	
Remote configuration and monitoring	Via BT Broadband connection with secure VPN with IPsec remote system monitor for system generated alarms and pro-active system diagnosis.
Support	BT service centre support available 24/7/365 by calling 08708 507925. National network of BT engineers available (response within 4 hours)
Maintenance	Cover at fixed cost for 3 years (option to extend to years 4 & 5 at extra cost)
System	
i-witness client workstation	Tower PC (with DVD+R), 2x17" displays, keyboard and mouse
Construction	Modular and expandable. Integrated cooling and dual power supplied where necessary. UPS back-up
System housing	Cabinet 600 x 900mm footprint, up to 47U height, lockable metal mesh doors to front and rear (amount of cabinets depends on installation scale)

Typical i-witness network architecture



To find out more about
BT redcare i-witness, email
redcare@bt.com
or call
0800 800 828



Offices Worldwide

The telecommunications services described in this publication are subject to availability and may be modified from time to time. Services and equipment are provided subject to British Telecommunications plc's respective standard conditions of contract. BT and the BT logo are trademarks of British Telecommunications plc.

© British Telecommunications plc 2006
Registered office: 81 Newgate Street, London EC1A 7AJ
Registered in England No: 1800000
Produced by BT redcare
Please quote ref: 51562