



ZX55-IP Infrared Imager



- ▶ **High performance day/night camera for perimeter surveillance and critical asset monitoring**
- ▶ **Integrated Intelligent Video Analysis (IVA)**
- ▶ **Black Diamond Infrared Illumination Technology**
- ▶ **Long-range Classification and Recognition Level Performance**
- ▶ **Rugged All-Weather Construction**
- ▶ **Bosch BVIP MPEG-4 video encoder**

The ZX55-IP is an Infrared Imager for long range, critical outdoor Day/Night surveillance applications. The ZX55-IP features a 9-90 mm lens, powerful Black Diamond infrared illumination and a powerful processor for Intelligent Video Analysis (IVA). The ZX55-IP also provides night imaging up to 300 m (1000 ft) resulting in unparalleled performance for long range 24/7 surveillance applications.

To effectively monitor critical assets and long stretching perimeters, the ZX55-IP incorporates a 9-90 mm varifocal lens. Narrow or wide angle shots are possible for the preferred field of view, with the system capable of delivering identification-level performance to 100 m (330 ft), providing the ability to distinguish facial features.

This high level imaging is also delivered with lower network bandwidth impact than standard IP cameras.

The weather-rated ZX55-IP features top and side sunshields to reflect heat in applications that expose the unit to intense direct sunlight. The integral flow-through-vent also allows airflow to directly cool the high performance system and lower internal temperatures. The ZX55-IP is ideal for critical applications such as force protection, perimeter surveillance, and critical asset monitoring.

Functions

Intelligent Video Analysis (IVA)

- On-board video content analysis monitors scene activity and flags user-defined events such as alarms (additional license required)

Black Diamond Infrared Illumination Technology

- Black Diamond technology eliminates hotspot foregrounds and underexposed backgrounds
- Extended range infrared to deliver night imaging to 300 m (1000 ft)
- Reduces image noise and enables better compression, reducing bit rates and enhancing network stability
- Enables effective night-time performance of video analytics

Rugged All-Weather Construction

- Field-proven NEMA4X weather-sealed housing
- Cable-managed wall bracket
- Dedicated camera bay for easy-optical adjustments
- Sunshields on top and sides for optimal heat deflection
- Designed to survive 250 km/h (155 mph) wind loading

High Performance Video Encoder

- MPEG-4 and MJPEG at 30 fps, full resolution
- Tri-stream video allows for simultaneous high resolution viewing with high efficiency storage (or vice versa)
- Supported by a wide range of VMS and NVR solutions

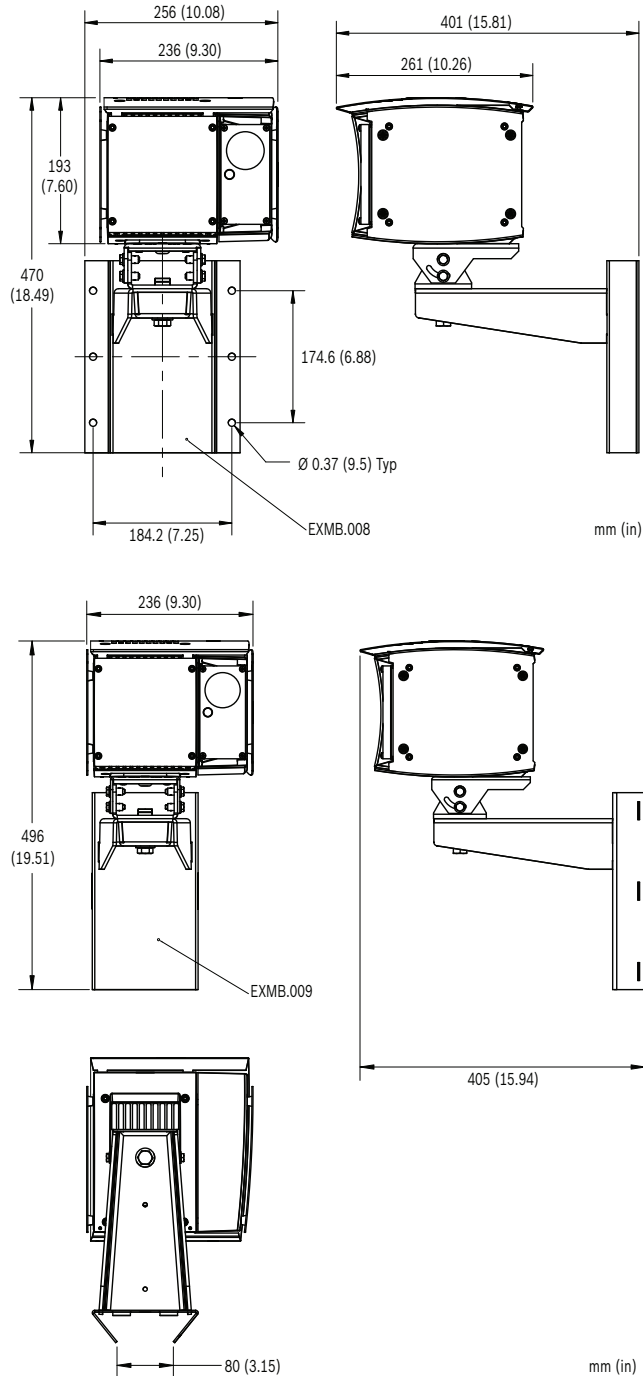
Precision Engineered Performance Optics

- 540 TVL hi-resolution day/night CCD for vivid daytime color and outstanding night vision

- 9-90 mm infrared-corrected lens delivers a wide DCRI surveillance range to 300 m (1000 ft) for maximum imaging versatility
- Infrared-corrected lens eliminates focus shift and infrared bleed

Installation/Configuration Notes

Dimensions



Technical Specifications

Video

ZX55-IP Infrared Imager	
Sensor	1/3-inch Day/Night CCD
Effective Pixels (H x V)	NTSC: 768 x 494
Effective Pixels (H x V)	PAL: 752 x 582
Resolution	540 TVL color / 540 TVL monochrome
Daytime Sensitivity	0.02 Lux at F1.4
Night time Sensitivity	0 Lux - works in total darkness
Lens	IR corrected 9 to 90 mm varifocal auto-iris, DC drive
Gamma	0.45
Video Output	1 Vpp, 75 ohm
Day-Night Switching	Photocell-controlled, automatic
Photocell	Automatic, sensitivity adjustable
Illumination	Black Diamond Infrared LED array, intensity adjustable
Wavelength	850 nm (semi-covert) or *940 nm (covert)

**(For 940 nm, 50-60% distance loss from stated distances at 850 nm)*

Range Specifications

	Night Vision	IR Horizontal Field of View (10° beam angle)
Detection	300 m (1000 ft)	45 m (150 ft)
Classification	250 m (820 ft)	35 m (120 ft)
Recognition	150 m (500 ft)	25 m (80 ft)
Identification	100 m (330 ft)	15 m (50 ft)

Interfaces

Ethernet	10/100 Base-T RJ45
Analog	PAL or NTSC BNC

IP

Protocols	Telnet, RTP, HTTP(S), ARP, TCP, UDP, IP, ICMP, DHCP, IGMPv2/v3, SNMP, 802.1x
Compression	MPEG-4 SP and MJPEG, up to 30 frames per second, tri-stream selectable
Frame Rate	1-30 FPS programmable (full motion)
Bandwidth	Configurable from 9.6 Kbps to 6 Mbps

Resolution and Frame Rates	PAL (H x V)	NTSC (H x V)
4CIF: 25/30 IPS	704 x 576	704 x 480
2CIF: 25/30 IPS	704 x 288	704 x 240
half D1: 25/30 IPS	352 x 576	352 x 480
CIF: 25/30 IPS	352 x 288	352 x 240
QCIF: 25/30 IPS	176 x 144	176 x 120

Electrical

Voltage Supply	12 to 24 VDC or VAC
----------------	---------------------

Power Consumption	58 W max
-------------------	----------

Mechanical

Construction	Aluminum extrusion / polycarbonate / ABS alloy
--------------	--

Finish	Anodized housing / acrylic urethane paint for sun shield
--------	--

Window	Injection molded 2.5 mm window
--------	--------------------------------

Bracket	Heavy duty cable managed bracket included
---------	---

Dimensions (HxWxD)	296 x 236 x 377 mm (12 x 9 x 15 in)
--------------------	-------------------------------------

Weight	8.6 kg (19 lb)
--------	----------------

Environmental

Operation Temperature Range	-50 °C to +50 °C (-58 °F to +122 °F)
-----------------------------	--------------------------------------

Wind Load	Designed to survive 250 km/h (155 mph) wind loading
-----------	---

Environment	Certified to CSA Type 4X outdoor weather rating. Designed to IP67
-------------	---

Ordering Information**Accessories**

ALTV244220 230 VAC Power Supply 230 VAC, 50 Hz, 84 VA out, wall mount	ALTV244220
---	-------------------

ALTV244UL 120 VAC Power Supply 120 VAC, 60 Hz, 84 VA out, wall mount	ALTV244UL
--	------------------

Software Options

NEA-IP200B-FS3 Extreme-Series IVA 3.0 VCA software license	NEA-IP200B-FS3
--	-----------------------

Ordering Information

NEI-558V90-21BS IP IR Imager	NEI-558V90-21BS
-------------------------------------	------------------------

Long range IP IR Imager, Day/night, 9-90 mm, 850 nm Black Diamond, NTSC, black, wall mount	
--	--

NEI-558V90-11BS IP IR Imager	NEI-558V90-11BS
-------------------------------------	------------------------

Long range IP IR Imager, Day/night, 9-90 mm, 850 nm Black Diamond, PAL, black, wall mount	
---	--

NEI-559V90-21BS IP IR Imager	NEI-559V90-21BS
-------------------------------------	------------------------

Long range IP IR Imager, Day/night, 9-90 mm, 940 nm Black Diamond, NTSC, black, wall mount	
--	--

NEI-559V90-11BS IP IR Imager	NEI-559V90-11BS
-------------------------------------	------------------------

Long range IP IR Imager, Day/night, 9-90 mm, 940 nm Black Diamond, PAL, black, wall mount	
---	--

NEI-558V90-21BP IP IR Imager	NEI-558V90-21BP
-------------------------------------	------------------------

Long range IP IR Imager, Day/night, 9-90 mm, 850 nm Black Diamond, NTSC, black, pole mount	
--	--

NEI-558V90-11BP IP IR Imager	NEI-558V90-11BP
-------------------------------------	------------------------

Long range IP IR Imager, Day/night, 9-90 mm, 850 nm Black Diamond, PAL, black, pole mount	
---	--

NEI-559V90-21BP IP IR Imager	NEI-559V90-21BP
-------------------------------------	------------------------

Long range IP IR Imager, Day/night, 9-90 mm, 940 nm Black Diamond, NTSC, black, pole mount	
--	--

NEI-559V90-11BP IP IR Imager	NEI-559V90-11BP
-------------------------------------	------------------------

Long range IP IR Imager, Day/night, 9-90 mm, 940 nm Black Diamond, PAL, black, pole mount	
---	--

Americas:
Bosch Security Systems, Inc.
130 Perinton Parkway
Fairport, New York, 14450, USA
Phone: +1 800 289 0096
Fax: +1 585 223 9180
security.sales@us.bosch.com
www.boschsecurity.us

Europe, Middle East, Africa:
Bosch Security Systems B.V.
P.O. Box 80002
5600 JB Eindhoven, The Netherlands
Phone: + 31 40 2577 284
Fax: +31 40 2577 330
emea.securitysystems@bosch.com
www.boschsecurity.com

Asia-Pacific:
Robert Bosch (SEA) Pte Ltd, Security Systems
11 Bishan Street 21
Singapore 573943
Phone: +65 6571 2600
Fax: +65 6571 2698
apr.securitysystems@bosch.com
www.boschsecurity.com

Represented by