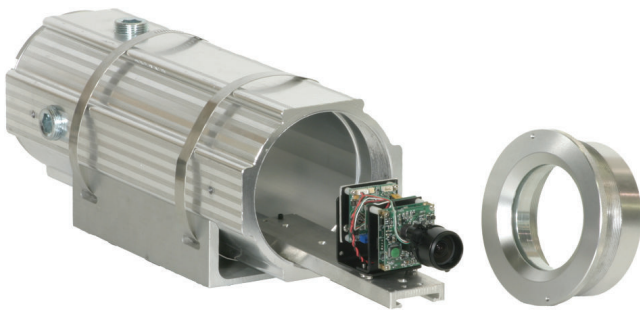



BOSCH

Invented for life

EX62 Series Explosion Protected Camera Housing



- ▶ **Designed and certified for effective explosion protected performance at hazardous locations**
- ▶ **Class I, II, III, Div. 1, 2, Groups A, B, C, D, E, F, G, T6**
- ▶ **Larger design for full-sized cameras and lenses**
- ▶ **Heavy duty extruded aluminum construction**
- ▶ **Easy access optical slide tray**
- ▶ **3/8 in. chemically resistant window**

The EX62 is a 14 in. explosion protected camera housing for effective surveillance in high risk environments. Designed and certified for covering the entire range of North American Division requirements per NEC standards. Its stringent Class I, Division I certifications allow safe functioning at locations where ignitable concentrations of flammable gases or liquid vapors are present during normal operation. Groups covered include acetylene, hydrogen, ethylene and methane, all highly explosive gases. The EX62 is also certified for operation in areas where ignitable concentrations of combustible dusts (such as carbon-based or agricultural dusts) are present during normal operation.

The EX62 is also designed to CCTV industry standards for mounting hardware and motorized pan/tilt devices.

Functions

Applications

- Chemical factories
- Petroleum refineries, oil and gas processing
- Utility gas plants
- Grain elevators, flour mills
- Dry cleaning plants
- Pharmaceutical plants
- Coal and carbon processing
- Aircraft hangars
- Spray finishing areas

- Munitions and fuel storage facilities

Note

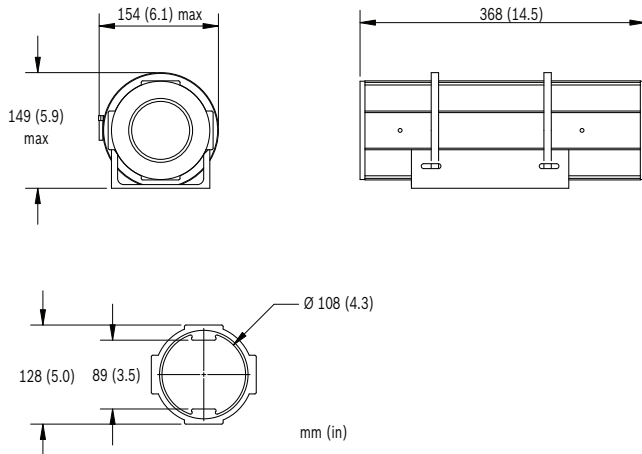
The use of explosion protected housings may be subject to local or regional regulatory approval. The authorities having jurisdiction for each installation and application may vary and their respective requirements may differ. The integration of your equipment with the EX62 may also be subject to local authority approval.

Certifications and Approvals

Region	Certification
Canada	CSA
CSA-NRTL	LR 113310
Class	9098 01 / 81 - Miscellaneous - for Hazardous Locations
Safety	UL / CSA
	UL 508, Sixteenth Edition - Industrial Control Equipment
	UL 698, Eleventh Edition - Industrial Control Equipment for Use in Hazardous (Classified) Locations
	UL 1203 Explosion-Proof and Dust-Ignition-Proof Electrical Equipment for Use in Hazardous (Classified) Locations

	CSA C22.2 No.0-M1991 General Electrical Requirements
	CSA C22.2 No.0.4-M1982 Bonding and Grounding of Electrical Equipment (Protective Grounding)
	CSA C22.2 No.25-M1966 Enclosures for Use in Class II Groups E, F, and G Hazardous Locations
	CSA C22.2 No.30-M1986 Explosion-proof Enclosures for Use in Class I Hazardous Locations
	CSA C22.2 No.94-M1991 Special Purpose Enclosures
	CSA C22.2 No.142-M1987 Process Control Equipment
	Class I, Div 1, 2, Groups A, B, C, D
	Class II, Div 1, 2, Groups E, F, G
	Class III
Operational	Temperature Code T6 at maximum ambient temperature 55°C (131°F)
Environmental	CSA / NEMA TYPE 4
Note	Product is not ATEX certified.

Installation/Configuration Notes



Maximum internal camera and lens dimensions:
 279 mm (11 in) length
 89 mm (3.5 in) camera width
 76 mm (3.0 in) camera height
 63 mm (2.5 in) lens diameter (EX62-HSG-H)
 76 mm (3.0 in) lens diameter (EX62-HSG)

Technical Specifications

Mechanical

Construction	Robust aluminum extrusion with four 3/4-inch NPT conduit entries
Brackets	U-Bracket with stainless steel straps included
Construction	Extruded copper-free anodized aluminum with four 3/4-inch NPT conduit entries
View Window	3/8-inch tempered glass
Dimensions	149 x 154 x 368 mm (5.9 x 6.1 x 14.5 in) including bracket and straps
Weight	5.6 Kg (12.3 lb)

Ordering Information

EX62-HSG Explosion Protected Camera Housing 14 in. Explosion protected camera housing	EX62-HSG
EX62-HSG-H Explosion Protected Camera Housing 14 in. Explosion protected camera housing with 24 VAC heater/blower	EX62-HSG-H

Accessories

EXSH.62 Sunhood Sunhood	EXSH.62
EXMB.007B Heavy Duty Wall Bracket Heavy Duty Wall Bracket, Black	EXMB.007B
EXMB.004B Ceiling and Pedestal Bracket Mounting Bracket, HD, Pan/Tilt Adjust - Ceiling Mount for EX52, EX62, black	EXMB.004B
EXMB.005B Heavy Duty Wall Bracket Mounting Bracket, HD, Pan/Tilt Adjust - Wall Mount, black	EXMB.005B
UPA-2430-60 Power Supply 120 VAC, 60 Hz, 24 VAC, 30 VA Out	UPA-2430-60
UPA-2420-50 Power Supply 220 VAC, 50 Hz, 24 VAC, 20 VA Out	UPA-2420-50

Americas:
 Bosch Security Systems, Inc.
 130 Perinton Parkway
 Fairport, New York, 14450, USA
 Phone: +1 800 289 0096
 Fax: +1 585 223 9180
 security.sales@us.bosch.com
 www.boschsecurity.us

Europe, Middle East, Africa:
 Bosch Security Systems B.V.
 P.O. Box 80002
 5600 JB Eindhoven, The Netherlands
 Phone: +31 40 2577 284
 Fax: +31 40 2577 330
 emea.securitysystems@bosch.com
 www.boschsecurity.com

Asia-Pacific:
 Robert Bosch (SEA) Pte Ltd, Security Systems
 11 Bishan Street 21
 Singapore 573943
 Phone: +65 6258 5511
 Fax: +65 6571 2698
 apr.securitysystems@bosch.com
 www.boschsecurity.com

Represented by