

G³ EnviroDome™

Systems

- **Now Available in 25X Day/Night Versions Plus Color, B/W & 18X Day/Night**
- **Digital Image Stabilization (25X)**
- **Privacy Masking & Sector Blanking**
- **Slow Shutter Control (Frame Integration)**
- **Rugged Weather-resistant Design**
- **High Resolution/Sensitivity**
- **Remotely Configurable**
- **Patented AutoPivot & Auto Scaling Features**
- **Three Year Warranty**
- **Multilingual Displays**



Philips' G3 EnviroDome™ is available in 4 camera versions: color, monochrome, 25X day/night, and 18X day/night versions which switch from color to monochrome when light levels drop. All four versions are offered in a small, easy-to-install, weather-resistant package, making it an inconspicuous, effective deterrent.

The day/night EnviroDomes can be programmed to automatically switch into night mode (from color to b/w) by removing the IR filter when light levels drop below the specified threshold. The user can also switch modes manually from the keyboard.

Slow shutter control (frame integration) is standard on all color and day/night EnviroDomes. With this option, the camera can reduce the shutter speed to as little as 1/4-sec, thus increasing the sensitivity to nearly 0.002 lux in select models.

The G3s offer remote addressing via our FastAddress capability, allowing installation of all domes first, then setting the addresses via the control system. Since it is not necessary to go to the camera's physical location, this

feature makes it easier to readdress cameras at a later time.

Another option of the G3 EnviroDome is the fiber optic transmission of both video and control signals over a single fiber for distances up to 4 km (2.5 mi).

This attractive integrated unit, designed to meet IP66 and NEMA 4, offers a wide operating temperature range, and its low profile makes it stable in windy conditions. Add high speed pan/tilt with 360° continuous rotation and 0.5° accuracy on presets, and you can get to any pre-position, with great accuracy, in less than a second. In addition, the patented scaling feature ensures optimal control for viewing at all zoom settings.

To further enhance performance, we've added digital image stabilization in the 25X day/night domes. This new feature compensates for slight camera movements, ensuring a steady picture, and is on/off controllable from the keyboard.

The 25X and 18X G3 domes now include Sector Blanking and Privacy Masking. Sector Blanking prohibits an operator from viewing any number of

the 16 sectors. Privacy masking expands on this capability, allowing you to create 6 independent rectangular masks that prohibit viewing of the selected area. These masks move as the unit pans, tilts, and zooms, ensuring consistent coverage.

AGC functionality has also been improved. The AGC can now be set to one of six predetermined limits, ensuring a properly exposed image in a wide variety of lighting conditions.

The G3 EnviroDome is designed to save you time, easily locking into place to make installations a breeze. Standard features include an on-screen display during programming, 16-character sector titling (16 sectors), and pre-position titling (99 pre-positions).

The auto-playback (Guard Tour) feature allows storage of 2 types of guard tours: one (1) preset tour and two (2) recorded tours with a combined duration of 15 minutes. Recorded tours consist of control commands and can be played back as needed. All camera position information is stored for maximum flexibility (including pan, tilt, zoom, etc.). The preset tour consists of up to 99 scenes consecutively.

G3 ENVIRODOME FEATURES

The following are some of the features that make the EnviroDome one of the most flexible domes in the industry. These adjustments can be made by the installer to customize the EnviroDome's operation to meet a particular customer's needs.

Camera Commands

- Picture quality settings such as **White Balance** and **Sharpness**.
- **Max Gain:** When Automatic Gain Control (AGC) is on, the EnviroDome allows selection of a specific **max** setting that the AGC can achieve, limiting graininess of the picture. The camera automatically adjusts to very low-light situations.
- **Slow Shutter (Frame Integration):** By slowing the shutter speed, the camera's sensitivity increases, resulting in visibility at much lower light levels. Available settings are **fully automatic** or one of 4 specific shutter speeds.
- **Digital Zoom:** A full 12x digital zoom can be utilized once the maximum optical zoom has been reached. If digital zoom is not desired, it can be disabled.

Day/Night Commands

- **Night Mode:** This feature switches the camera from Color to Monochrome and removes the IR filter, thus increasing the camera's sensitivity in low light applications. Settings are **on**, **off**, or **fully automatic**.
- **Night Mode Threshold:** When set to automatic, this feature determines the light level at which the camera will switch to night mode.
- **Digital Stabilization (25X versions):** Electronic compensation which filters out vibrations of up to 80% movement at 10 Hz, as caused by wind and other environmental conditions.

Dome Commands

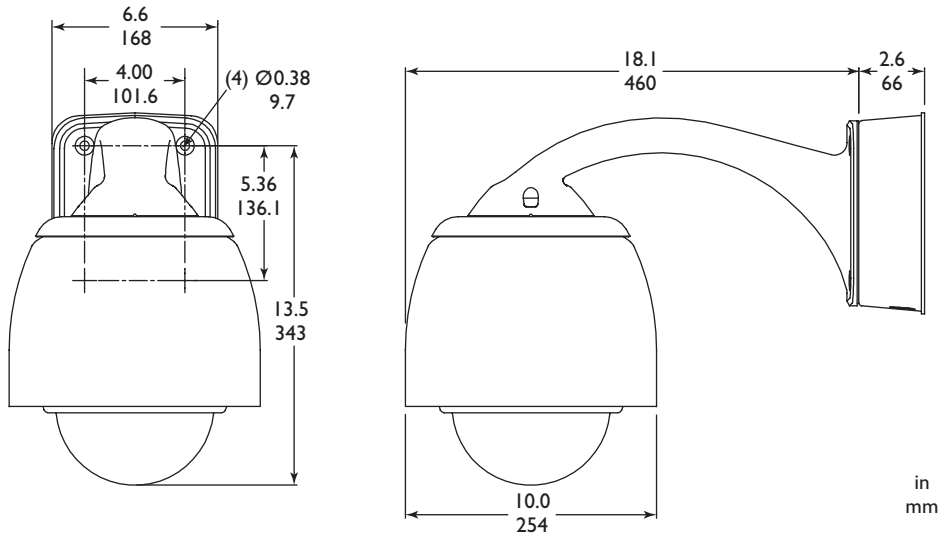
- **Sector Blanking:** Video blanking in up to 16 specified sectors within total field-of-view.
- **Privacy Masking:** Up to six (6) areas can be masked from visibility.
- **Guard Tours:** There are two styles of Guard Tours:
 1. The **preset tour** has capability for up to 99 presets, which can either be included or excluded from the tour. The dwell time can be

specified, whereupon each of the included presets will be visited consecutively. This tour continues until operator intervention.

2. **Recorded tours (2)** are available, which have a combined duration of 15 minutes of movements. These are recorded **macros** of an operator's movements, including Pan, Tilt, and Zoom activities, and can be **played back** in a continuous manner. This creates a smoother and more thorough type of automated tour.
- **Inactivity:** When an operator stops manual control of a dome, the inactivity option determines what the dome should do next, if anything. The options are to **return to a specific preset, return to the automated tour previously executed, or do nothing**. The installer can determine the duration of the inactivity period.
 - **Password Control:** This feature allows the installer to determine the security level of dome commands. Available settings are as follows:
 1. **Low** (any user can access any option).
 2. **Medium** (a published command unlocks the commands [OFF-90-ENTER]).
 3. **High** (a four digit (modifiable) password is required to unlock the commands).

ENVIRODOME ACCESSORIES

Model	Description	Model	Description
Wall Mounts		Pipe Mounts	
LTC 9544/00	Wall Mount Plate	LTC 9543/00	Pipe Mount Cap
LTC 9540/60	Pendant Arm Mount with 120 V Transformer	LTC 9543/60	Pipe Mount with 120 V Transformer (LTC 5401 Enclosure)
LTC 9540/50	Pendant Arm Mount with 230 V Transformer	LTC 9543/50	Pipe Mount with 230 V Transformer (LTC 5401 Enclosure)
LTC 9540/60F	Pendant Arm Mount with 120 V Transformer and Fiber Optic Module	Roof (Parapet) Mounts	
LTC 9540/50F	Pendant Arm Mount with 230 V Transformer and Fiber Optic Module	LTC 9230/00	Roof (Parapet) Mount
LTC 9540/24	Pendant Arm Mount with Transformer Box	LTC 9230/60	Roof (Parapet) Mount with 120 V Transformer (LTC 5401 Enclosure)
LTC 9540/00	Pendant Arm Mount	LTC 9230/50	Roof (Parapet) Mount with 230 V Transformer (LTC 5401 Enclosure)
Corner Mounts		LTC 9230/01	Flat Roof Adapter Plate (for use with LTC 9230 Series Mounts)
LTC 9542/00	Corner Mount Plate	Power Supplies	
LTC 9542/60	Pendant Arm Corner Mount with 120 V Transformer	LTC 5401/60	120 V Enclosed Outdoor Transformer
LTC 9542/50	Pendant Arm Corner Mount with 230 V Transformer	LTC 5401/50	230 V Enclosed Outdoor Transformer
LTC 9542/60F	Pendant Arm Corner Mount with 120 V Transformer and Fiber Optic Module	LTC 5401/60F	120 V Enclosed Outdoor Transformer with Fiber Optic Module
LTC 9542/50F	Pendant Arm Corner Mount with 230 V Transformer and Fiber Optic Module	LTC 5401/50F	230 V Enclosed Outdoor Transformer with Fiber Optic Module
Pole (Mast) Mounts		Bubbles	
LTC 9541/00	Pole (Mast) Plate	BUB-ENVPWCL	Clear Bubble Assembly
LTC 9541/60	Pendant Arm Pole (Mast) Mount with 120 V Transformer	BUB-ENVPWTI	Tinted Bubble Assembly
LTC 9541/50	Pendant Arm Pole (Mast) Mount with 230 V Transformer		
LTC 9541/60F	Pendant Arm Pole (Mast) Mount with 120 V Transformer and Fiber Optic Module		
LTC 9541/50F	Pendant Arm Pole (Mast) Mount with 230 V Transformer and Fiber Optic Module		



G3 EnviroDome Dimensional Drawing



PHILIPS

Let's make things better.