



BOSCH
Invented for life

DB Series DiBos Digital Video Recorders - Version 8



- ▶ Models for 6, 12, 18, 24 and 30 analog cameras and up to 32 additional network devices
- ▶ MPEG-4 compression
- ▶ Control cameras and AutoDomes with Biphase or Bilinx
- ▶ 2 Spot monitor outputs
- ▶ Web-browser access for remote viewing and control
- ▶ DVD-RW for export of video clips
- ▶ Integrates to Bosch security panels and or ATMs
- ▶ Powerful and easy-to-use interface

DiBos takes video surveillance to a new level with Bosch's state-of-the-art digital recording and communications technology. It is an integral part of overall security solutions for a wide range of applications – including banks, large retailers, railway stations, airports, city centers, industrial facilities, and public and corporate offices.

Customers can retrieve vital images and share information faster than ever before – so they can assess situations and take action immediately. Whether they're on site or at a remote network location, authorized personnel have quick, convenient access to critical information so they can operate more effectively and efficiently.

DiBos is scalable – it can store up to 450/375 ips (NTSC/PAL) on 30 composite video inputs, plus up to 30/25 ips per attached network camera or network video server. Users can connect up to 32 additional network video/audio sources. As many as 10 audio streams can be recorded on a 30-video channel unit, and every network video server can add one audio channel.

The system offers advanced features for viewing, flexible recording, and image access. The real power of DiBos is fast, convenient accessibility to images and information whenever and wherever customers need it.

They can communicate and access DiBos via a private or public network. The system also interfaces to a variety of peripheral devices and systems.

The GUI's unique, scalable viewing capability allows live and archived images from multiple remote systems to be viewed from the same remote PC, or even other DiBos systems. With this powerful tool, security managers can monitor and supervise various locations simultaneously, with complete flexibility in selecting and viewing live and recorded images.

Cameras and viewing modes can be programmed or selected manually. Each camera also offers exceptional in-window pan/tilt/zoom functionality from local or remote facilities. Images are displayed with date/time, location, zone, camera indications, and status of connected devices such as detectors and sensors.

DiBos can be programmed to respond to specific situations and events automatically, without human intervention. Actions may include transmitting images and/or messages to security personnel or alarm monitoring centers in a pre-defined situation (e.g., an alarm is triggered).

Playback is easy thanks to familiar "tree structure" search and navigation functions. Images can be accessed locally or remotely via a company network or the Internet. Customers can select multiple views from as many as 30 cameras.

Fast, powerful image search functions eliminate time-consuming manual searches of physical media. Functions include Smart Search for image changes, as well as searches for criteria such as camera number, recording date/time, and optional ATM transaction data. ATM data includes credit card, time, date, transaction number, bank code, account number, and/or amount withdrawn.

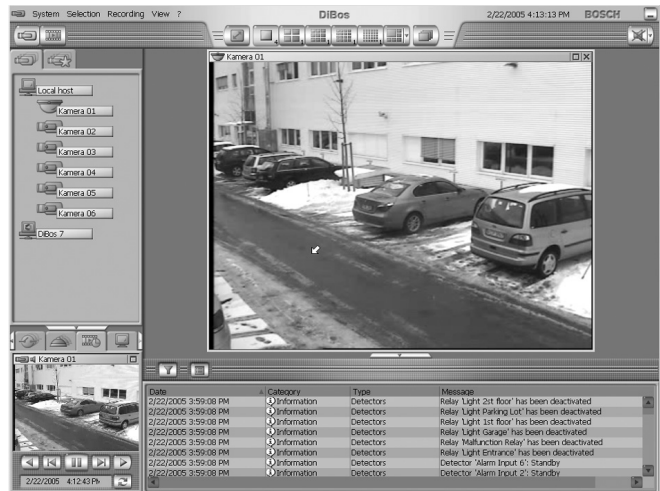
To ensure high security, all access is subject to appropriate user authorization. Profiles are assigned by the system administrator and events are tracked in the database (e.g., login, logoff, status changes, image transmission, and system shutdown). Video authentication is built in to ensure that DiBos images are not altered in any way.

The system's architecture allows standard network devices to be connected and used transparently. A variety of network storage devices – such as external disk arrays, RAID and NAS devices, and external disk drives – may be used for exporting, backup, or image sharing.

DiBos supports Bilinx capability for remote PTZ and remote camera setup. The configuration wizard makes installation quick and easy. And once it's installed, customers have full control of camera selections, sequencing, and viewing modes for every situation.

DiBos serial ports can connect to the alarm panel, ATMs, or Allegiant matrices (existing ones are controlled via CCL commands).

In addition to MPEG-4 network capability, DiBos can receive JPEG images from a variety of manufacturers' network cameras. These cameras can be added to a fully populated system in a network environment. Recording configurations may be set to archive images (just like a standard camera).

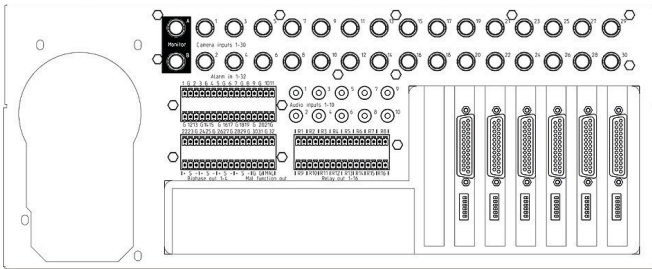


Live screen

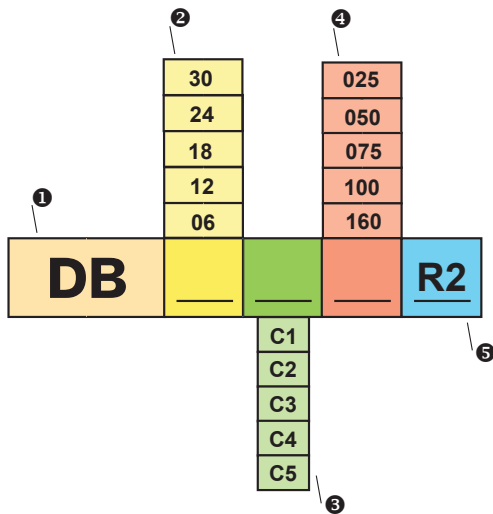


Playback screen

Installation/Configuration Notes



Rear view



- 1 Type DiBos
- 2 Number of analog camera inputs
- 3 C1 version with: 750 GB
C2 version with: 750 GB
C3 version with: 250, 500, 1000, 1600 GB
C4 version with: 250, 500, 1000, 1600 GB
C5 version with: 250, 500, 1000, 1600 GB
- 4 Disk size (x10 GB)
- 5 Version

E.g. : **DB 30 C5 160 R2**
is 30 channel DiBos with 1600 GB storage

Technical Specifications

Electrical

Camera Inputs

- 6 BNC connectors (DB 06 C1)
- 12 BNC connectors (DB 12 C2)
- 18 BNC connectors (DB 18 C3)
- 24 BNC connectors (DB 24 C4)
- 30 BNC connectors (DB 30 C5)

1V p-p composite video signal, 75 ohm

Video looping out Via breakout cable

Recording resolution PAL 352 x 288(CIF), 704 x 288(2CIF) pixels
NTSC 352 x 240(CIF), 704 x 240(2CIF) pixels

Network Devices

DB 06 C1, 16 Video/Audio MPEG-4 streams from Bosch/VCS network device or JPEG devices
DB 12 C2, network device or JPEG devices
DB 18 C3
DB 24 C4, 32 Video/Audio MPEG-4 Streams from Bosch/VCS network device or JPEG devices
DB 30 C5 network device or JPEG devices

Compression method MPEG-4

DiBos unit	IPS CIF (PAL)	IPS CIF (NTSC)	IPS 2CIF (PAL)	IPS 2CIF (NTSC)
DB 06 C1	75	90	50	60
DB 12 C2	150	180	100	120
DB 18 C3	225	270	150	180
DB 24 C4	300	360	200	240
DB 30 C5	375	450	250	300

Image Size Configurable from approx. 1.5 kB to 20 kB

IPS per channel PAL 0.5, 1, 2, 3, 4, 5, 6, 8, 12.5, 25

IPS per channel NTSC 0.5, 1, 2, 3, 5, 6, 7.5, 10, 15, 30

Audio Inputs 2, 4, 6, 8, 10, cinch connector, line-in-signal, 16kHz sample rate

Audio Outputs 1, Line-out signal, 1/8in. mini phone jack

Alarm Inputs (NO/NC) 32

Malfunction Relay Output 1

Spot Monitor Output 2 CVBS outputs for full screen or sequences from the attached analogue cameras

Bilinx For AutoDome control and Dinion camera configuration via coax

PTZ control Bilinx (via Coax for up to 30 AutoDome units) Biphase (up to 16 AutoDome units)

RS 232: Supported Protocols: Bosch, Panasonic, Pelco (D-Protocol), JVC, SAE

RS 232: Via Console Port of Any Allegiant Matrix

Relay Outputs (NO/NC) 16

Internal HDD Storage* 250GB, 500GB, 750GB, 1000GB, 1600GB

*) 5GB HDD space is used for OS and DiBos software

Ethernet	10/100/1000Base-T, bandwidth throttling
CPU	Intel P4 (min. 3GHz)
RAM	512MB
RS 232	2
USB 2.0	5
DVD-RW	Included
Power Supply	100 / 240 VAC, 50 / 60 Hz (auto switch)
Typical Power Consumption	120 W (approximate)
Operating System	Microsoft Windows XP® embedded
Export of Video / Audio	DiBos - format or ASF- format on DVD-RW, USB-device or network drive
Image Printers	Via USB (with Windows XP drivers)
Video Output	1 x VGA

Mechanical

Dimensions (H x W x D)	17,5 x 48,0 x 54,5 cm (7 x 19 x 21.5 inch)
Weight	16 – 20.4 kg (25 – 55 lb), based on model

Environmental

Operating Temperature	5°C to 40°C, (41°F to 104°F)
Storage Temperature	-10°C to 60°C, (-14°F to 140°F)
Relative Humidity in Operation	15% to 80%, not condensing
Relative Humidity in Storage	8% to 80%, not condensing

Product Safety

Electromagnetic Compatibility (EMC)

-USA	FCC Part 15, Class A
-EU	EMC directive 89/336/EEC Immunity: Compliance with EN 50130-4 requires an external UPS*. Emission: EN 55022, Class A Mains Harmonics: EN 61000-3-2 Voltage fluctuations: EN 61000-3-3

Safety

- USA	UL60950 Third edition (2000) CAN/CSA 22.2 No.60950-00, Third edition (2000)
- EU	EN60950: 2000
Warranty	3 Years
Approved anti virus software (3rd Party Manufacturers)	Norton Anti Virus McAfee Virus Scan Trend Micro

*) The product is tested according EN50130-4, excluding voltage interruptions as indicated in EN50130-4:1995 chapter 8.3.4. Full EN50130-4 compliance requires an external Uninterruptible Power Supply. The UPS is not included with the product. For further details see the installation manual.

Hardware and software options

DiBos software receiver for alarm image streams via network and/or ISDN and/or PSTN	
DB SR 00 2	Non configurable devices
DB SR 16 2	16 configurable network devices
DB SR 32 2	32 configurable network devices

Remote PC Requirements for DB SR XX 2:

Operating System	Windows XP® Professional
CPU	Min. 2GHz, Pentium® 4
RAM	512MB
VGA Card	1024 x 768, 32-bit color
USB Port	for dongle

Country Kits

(all versions include manuals, keyboards and mouse)

DB EK 012 EN	English Version
DB EK 012 DE	German Version
DB EK 012 FR	French Version
DB EK 012 ES	Spanish Version
DB EK 012 IT	Italian Version
DB EK 012 PT	Portuguese Version
DB EK 012 NL	Dutch Version
DB EK 01 2 FI	Finnish Version
DB EK 01 2 SV	Swedish Version
DB EK 01 2 DA	Danish Version
DB EK 01 2 NO	Norwegian Version

External Storage Expansion**

DB EK 02 1	SCSI-Adapter for External Hard Disk Drive Array, Supports Various Bosch Disk Arrays up to 16TB
------------	--

Communication Extensions**

DB EK 031	PCI modem card (not DB 30 C5 160)
-----------	-----------------------------------

Interface Extension for Bosch Security Systems Panels:

DB SE 03 1	Connection via RS-232 to 9000 Series (Radionics), UGM 2020, UEZ 2000/1000, BZ 500, NZ/BZ 1060, NZ/BZ 1012, NZ 1008
------------	--

Interface Extension for Automated Teller Machines (ATM)**

DB SE 01 3	Up to 4 ATMs
DB SE 01 4	Up to 2 ATMs

Graphical adapter **

DB EK 08 1	PCI Graphic adapter for dual S-VGA-outputs, DVI-I and composite monitor output, build-in by BOSCH only
------------	--

Web Browser

	Microsoft Internet Explorer 6 or higher, on Windows 2000 or Windows XP options
--	--

**) Consult a Bosch Security Systems sales representative for details.

Windows® and Windows XP®, are registered trademarks of Microsoft Corporation. Intel is a registered trademark of Intel Corporation.

Ordering Information**Model & Description**

DB 06 C1 075 R2 DiBos Digital Video Recorder

6 channel, with 750 GB HDD, DVD-RW, 16 IP devices

DB 12 C2 075 R2 DiBos Digital Video Recorder

12 channel, with 750 GB HDD, DVD-RW, 16 IP devices

DB 18 C3 025 R2 DiBos Digital Video Recorder

18 channel, with 250 GB HDD, DVD-RW, 16 IP devices

DB 18 C3 050 R2 DiBos Digital Video Recorder

18 channel, with 500 GB HDD, DVD-RW, 16 IP devices

DB 18 C3 100 R2 DiBos Digital Video Recorder

18 channel, with 1000 GB HDD, DVD-RW, 16 IP devices

DB 18 C3 160 R2 DiBos Digital Video Recorder

18 channel, with 1600 GB HDD, DVD-RW, 16 IP devices

DB 24 C4 025 R2 DiBos Digital Video Recorder

24 channel, with 250 GB HDD, DVD-RW, 32 IP devices

DB 24 C4 050 R2 DiBos Digital Video Recorder

24 channel, with 500 GB HDD, DVD-RW, 32 IP devices

DB 24 C4 100 R2 DiBos Digital Video Recorder

24 channel, with 1000 GB HDD, DVD-RW, 32 IP devices

DB 24 C4 160 R2 DiBos Digital Video Recorder

24 channel, with 1600 GB HDD, DVD-RW, 32 IP devices

DB 30 C5 025 R2 DiBos Digital Video Recorder

30 channel, with 250 GB HDD, DVD-RW, 32 IP devices

DB 30 C5 050 R2 DiBos Digital Video Recorder

30 channel, with 500 GB HDD, DVD-RW, 32 IP devices

DB 30 C5 100 R2 DiBos Digital Video Recorder

30 channel, with 1000 GB HDD, DVD-RW, 32 IP devices

DB 30 C5 160 R2 DiBos Digital Video Recorder

30 channel, with 1600 GB HDD, DVD-RW, 32 IP devices

Hardware Accessories

DB EK 012EN English Keyboard and Manuals

DB EK 012DE German Keyboard and Manuals

DB EK 012ES Spanish Keyboard and Manuals

DB EK 012FR French Keyboard and Manuals

DB EK 012IT Italian Keyboard and Manuals

DB EK 012PT Portuguese Keyboard and Manuals

DB EK 012NL Dutch Keyboard and Manuals

DB EK 021 SCSI Card Adapter and SCSI cable

Built in the factory, included SCSI cable. Consult your local Bosch Security Systems Sales office for details.

DBSE 013 4 ATMs

Consult your local Bosch Security Systems Sales office for details.

DBSE 014 2 ATMs

Consult your local Bosch Security Systems Sales office for details.

DBEK 081 AGP Graphics Card

DB EK 08 1 TV-Out-Card

AGP graphical adapter, for dual S-VGA output, DVI-I and composite monitor output

DB EK 031 Internal Modem Card

For PSTN connection. Consult your local Bosch Security Systems Sales office for details.

Ordering Information**Model & Description****Software Options**

DBSE 031 Software Interface to Bosch Security Panels

DBSR 002 Receiver Software

no IP cameras

DBSR 162 Receiver Software/IP Recorder

16 IP cameras

DBSR 322 Receiver Software/IP Recorder

32 IP cameras

Americas:
Bosch Security Systems
130 Perinton Parkway
Fairport, New York, 14450, USA
Phone:+1 585 223 4060
Fax:+1 800 289 0096
security.sales@us.bosch.com
<http://www.boschsecurity.us>

Europe, Middle East, Africa:
Bosch Security Systems B.V.
P.O. Box 80002
5600 JB Eindhoven, The Netherlands
Phone:+31 (0) 40 27 83955
Fax:+31 (0) 40 27 86668
emea.securitysystems@bosch.com
<http://www.boschsecurity.com>

Asia-Pacific:
Bosch Security Systems Pte Ltd
38C Jalan Pemimpin
Singapore 577180
Phone:+65 6319 3450
Fax:+65 6319 3499
apr.securitysystems@bosch.com
<http://www.boschsecurity.com>

Represented by