

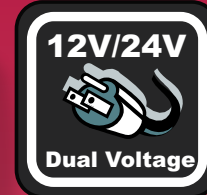
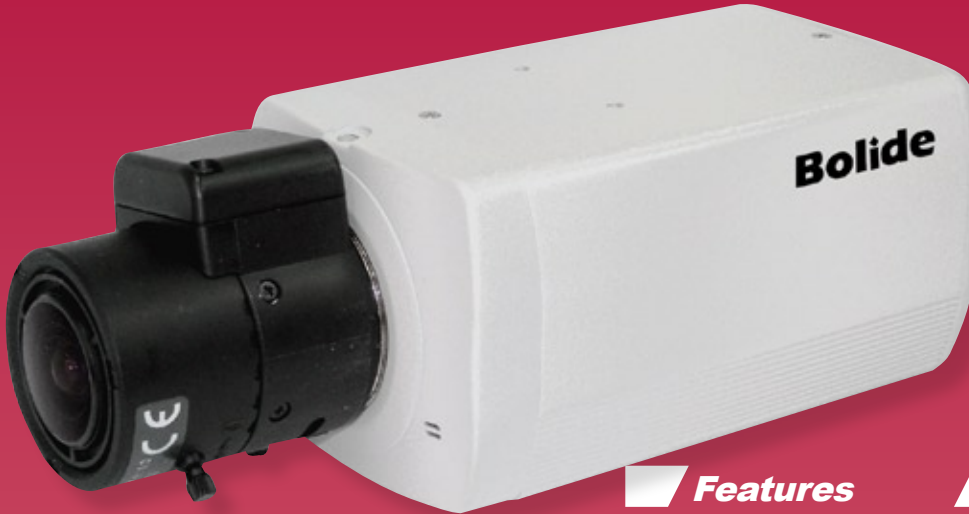
# BOLIDE

TECHNOLOGY GROUP

## BC2002HQDNC

Color Box Camera with IR-Cut Filter

### Color Box Camera with IR-Cut Filter



#### Features

- 1/3" Sony Super HAD CCD
- 540 TVL, 0.15 Lux
- DSP: Sony HQ1
- Automatic Day & Night Function
- Dual Voltage 12VDC/24VAC
- Mechanical IR Cut Filter



Regular Digital  
Day & Night

With IR-Cut Filter

#### Specification

Model No.	BC2002HQDNC
Image Device	1/3" Sony Super HAD CCD
DSP	Sony HQ1
Effective Pixels	811H x 508V
Resolution	540 TV Lines Resolution
Sync. System	Internal
S/N Ratio	more than 50dB
Day / Night Switching	Mechanical IR Cut Filter Auto Switching
Min. Illumination	0.15 Lux / F1.0
B.L.C.	On/Off
A.G.C.	On/Off
Flickerless	On/Off
Gamma Correction	0.45
Dimensions	60(W)mm x 50(H)mm x 99(D)mm
Power Supply	12VDC/24VAC
Power Consumption	3.0W
Operation Temperature	14°F ~ 113°F, RH85% MAX

Specification subject to change without notice. Bolide Technology Group all right reserved® 2008



**ISO 9001:2000  
Certified**

468 South San Dimas Ave,  
San Dimas, CA 91773  
www.bolideco.com

Tel: 909-305-8889  
Fax: 909-305-0999  
Email: sales@bolideco.com