

AXIS T92A10 Housing

Protective housing for Axis network cameras.



- > Indoor and outdoor installation
- > Easy installation
- > Aluminum casing
- > IP66-rated protection
- > Sunshield included

AXIS T92A10 Housing protects the Axis network camera in outdoor and adverse indoor conditions.

AXIS T92A10 Housing is tailor-made and carefully tested to comply with Axis network cameras. This stylishly designed housing has a side opening and a pre-installed 24V AC power connection board, for quick and easy installation.

Made of die-cast aluminum, the AXIS T92A10 Housing offers an IP66-rated protection against dust and heavy rain.

The sunshield with its integrated edge-protector offers good thermal insulation, enabling the Axis network camera to operate in temperatures up to +50°C (+122°F). Lowest operating temperature is -20° C (-4°F).

The housing comes with a wall bracket with ball joint and internal cable channel. Various accessories are also available.

Supported cameras are AXIS 210, AXIS 210A, AXIS 211, AXIS 211A, AXIS 211M, AXIS 211W, AXIS 221, AXIS 223M, AXIS Q1755, AXIS P1311, AXIS P1343, AXIS P1344 and AXIS P1346 Network Cameras.



Technical specifications – AXIS T92A10 Housing

General

Supported cameras	AXIS 210*, AXIS 210A*, AXIS 211, AXIS 211A, AXIS 211M, AXIS 211W**, AXIS 221, AXIS 223M, AXIS Q1755, AXIS P1311, AXIS P1343, AXIS P1344 and AXIS P1346 Network Cameras <i>*indoor use only</i> <i>**external antenna required</i>
Casing	Die-cast aluminum Sunshield in ABS Color: White grey RAL9002 3 removable cable glands (2xPG9 & 1xPG11)
Power	24V AC / 44W
Environment	Indoor/outdoor
Operating conditions	-20°C to + 50°C (-4°F to 122°F)
Protection rating	IP66
Approvals	CE: EN 60950, EN 61000-6-3, EN 50130-4
Weight	3.0 kg (6.6 lb) incl. sunshield
Included accessories	Sunshield, heater and thermostat, installation kit for camera, Installation Guide, 110V AC to 24V AC transformer

More information and a configuration tool is available at www.axis.com/accessories

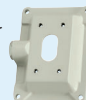
Wall bracket (included)

Ball joint and internal cable channel



Wall bracket accessories

Adapter plate



Pole adapter



Corner mount



Other accessories

Waterproof junction box



Dimensions mm (inch)

