

AXIS Camera Management

Efficient management tool for your Axis network video products



- > Powerful management of single or multiple sites
- > Easy camera configuration
- > Camera backup and restore
- > Reliable firmware upgrade
- > Efficient management of camera applications

AXIS Camera Management is a powerful and efficient installation and management tool that is specially designed to be used with Axis network video products. Using standard network protocols and methods, the tool can automatically find and configure devices, set IP addresses, show connection status, manage firmware upgrades and camera applications for multiple devices.

AXIS Camera Management can efficiently manage a few to several thousand of Axis network video products in one or several sites.

It automatically locates and adds multiple Axis video products on the local network and the software allows the user to set the IP addresses manually or configure the device for automatic DHCP assignment.

For easy system configuration camera parameters can be copied from one device to several other devices in the system. A powerful backup and restore feature makes it possible to restore the system to its previous state.

Support for AXIS Camera Application Platform makes it possible to efficiently distribute compatible applications as well as license key files to several devices in the system.

AXIS Camera Management has an intuitive user interface with display of device name, address, model, firmware version and status.

For efficient maintenance and administration, tags can be assigned to the devices in the system. The user-defined tags can, for example, be used to manage cameras in a certain area or list cameras scheduled for firmware upgrade.

Technical Specifications - AXIS Camera Management

Compatible products

Models Axis network cameras and encoders including HD, standard resolution, high resolution, Pan Tilt Zoom and thermal cameras with firmware 4.40 or later. Axis physical access control products (AXIS A1001 Network Door Controller, AXIS A8004-VE Network Video Door Station), AXIS C3003-E Network Horn Speaker

Camera management

Finding new devices	Discovery of new devices on the network, within the local subnet or on remote networks
Device tagging	User-defined tags
Unit status	Device status monitoring indicating accessible devices
Device configuration	Save, copy and configure standard parameters including Action rules, Stream profiles, Device time, Device users and IP settings to several devices, Backup and restore of camera settings
Device management	Restore to factory default values or restart device

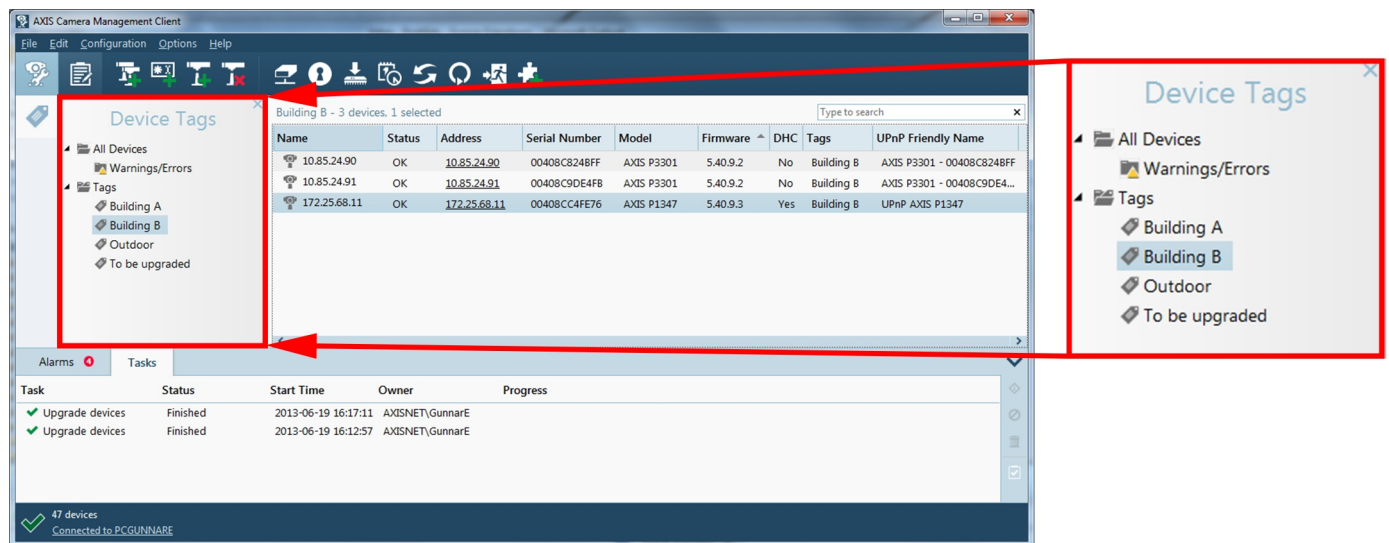
Camera management

Firmware upgrade	Upgrade of multiple devices sequentially or in parallel Automatic download of latest available firmware from Axis
Application management	Support for AXIS Camera Application Platform Installation of Axis-compatible applications including license files to multiple devices
General	
Logging	Activity log with sort/search functions showing performed actions and changed device status
Languages	English, French, German, Italian
Minimum system requirements	Intel i5 or equivalent AMD RAM: 2 GB (8 GB recommended for larger systems)
System recommendations	Windows 8.1 Pro 64-bit, Windows 10 Pro 64-bit * Always use the latest service packs Microsoft .NET runtime environment (included in installation package) * For a list of all supported operating systems, see the release notes available on www.axis.com/techsup

Efficient device management



Intuitive user interface



To simplify maintenance and efficiently manage the devices in the system it is possible to assign one or several user-defined tags.