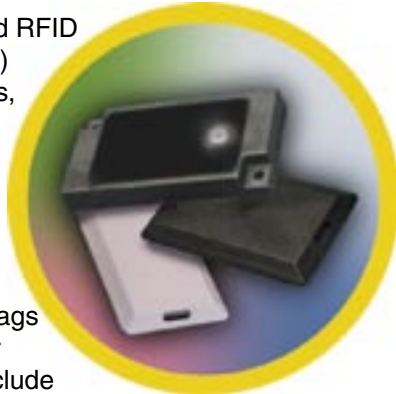


ACTIVETAG™

RFID Products

ActiveTag™ Tags

The ActiveTag family of high performance, battery-powered RFID (radio frequency identification) tags come in multiple varieties, each designed for specific application needs. Asset tags, with optional tamper alert, temperature sensor and beaconing capability are suited for tracking both large and small assets. Personnel tags are ideal for access control or personnel tracking; and can include a "panic" feature for instant, user-controlled alert. The ActiveTag Vehicle tags are available in standard form, Metal Mount for exterior use, and Harsh Environment to withstand extreme temperatures.



Activator

When this stand-alone transmitter is coupled with an application-specific antenna, it emits a low frequency activation signal that awakens tags as they pass through the antenna's field. The Activator transmits its specific ID location to the tag, which then retransmits the location ID along with the tag's unique identification number.



Network Receiver

This general-purpose receiver detects and receives tag signals, converts the data and transmits the information to the host application. The Network Receiver supports multiple industry standard communication methods, including Wiegand, RS-232 serial and Ethernet TCP/IP.



Activation Antennas

Activation Antennas connect to the Activator to create a wake up area specific to the application. Several types of activation antennas are available for multiple applications - each with varying styles and coverage areas.

The Flex Loop Antenna is created for under-carpet installation - lending itself to asset and personnel monitoring needs. The Bar Antenna is well suited for hands free personnel tracking and access control. The Picture Frame Antenna covertly blends in with its surroundings to offer facility-based personnel and asset monitoring. The Road Loop Antenna is buried in the roadway for vehicle access control and tracking.

ActiveTrac™ Software

Multi-purpose monitoring and tracking software runs on any Windows PC on the network to provide event logging, location information and instant alarm notification. Stored images can be assigned to tags for immediate visual recognition, while video snaps provide visual verification of events. Supports up to 250 ActiveTag Network Receivers simultaneously and is ODBC compliant to easily integrate with existing enterprise software.



e-OLS

A real-time e-supervisor that allows businesses to use the Internet to monitor multiple sites from anywhere in the world. With AXCESS' e-OLS, businesses can cost effectively track assets, personnel time and attendance, monitor compliance and enhance inventory management. Customers have access, through a browser, to raw tag data, up-to-the-minute reports on the status of assets, recorded video file playback, and live video on-demand or via personalized alarm notification.



Corporate Headquarters:
3208 Commander Drive
Carrollton, TX 75006
800.588.6080 / +1 972.407.6080
Fax 972.407.9085

www.axcessinc.com
email marketing@axcessinc.com

Access Control and RFID Applications

<i>Feature</i>	<i>Purpose</i>	<i>Benefit</i>
Asset & Personnel Tracking	Associate Personnel to Company Assets	Protect Intellectual Property on Laptops
Personnel Access Control & Tracking	Monitor Personnel Movement on Company Property	Control Personnel Access to Specific Zones - Safety
Asset Containment	Obtain "Real-Time" Inventory of all Capital Equipment	Protect Fixed Assets - Reduce Operating Costs
Personnel Access Control & Asset Containment	Monitor Personnel Accessing Finished Goods Inventory	Protect Against Internal Theft - Misplaced Items
Vehicle Access Control & Tracking	Associate Driver to Vehicle & Payloads. Locate Vehicles and Equipment over a LAN/WAN	Improved Mobile Asset Management - Availability
Asset Tracking - Static Inventory Control	Monitor Warehouse Inventory and Warehouse Personnel Movement	Reduce Excess Stock - Protect Against Theft
Temperature & Access Monitoring	Monitor Ambient Room Temperatures, Humidity and Control Access to Restricted Areas	Compliance Monitoring for Customer Requirements and Equipment Protection

The ActiveTag™ System

