

MegaView® 2 Megapixel IP Cameras

All-in-One Indoor/Outdoor Day/Night/IR Bullet-Style Camera with Remote Focus/Zoom P-Iris Lens



Motorized P-Iris Lens with IR Illuminator

Included Junction Box



Wide Field of View



Telephoto Field of View

All-in-One Solutions – MegaView® 2

MegaView 2 multi-megapixel cameras provide ample resolution to zoom-in for details in live or recorded video. These indoor/outdoor all-in-one solutions integrate a 1.3-, 1080p, 3-, 5-, or 10-megapixel camera with fast frame rates and an IR corrected motorized vari-focal P-iris lens into an IP66 environmental rated, impact resistant bullet-style housing. H.264 compression reduces bandwidth and storage requirements while delivering full frame rates and full resolution without sacrificing image quality.

Highlighted Features:

- All-in-One H.264 Cylindrical (Bullet-Style) Solution with IR LEDs
- Remote Focus/Zoom P-Iris Lens
- P-Iris Control to Get Best Depth of Field and Image Clarity
- Optional True WDR up to 100dB at Full Resolution: See Clearly in Shaded and Bright Light Conditions Simultaneously (AV2226 and AV3226)
- IP66 Vandal-Resistant Housing
- Total PoE Solution (No External Power Required for IR LEDs)
- ONVIF and PSIA Conformant
- New User-Friendly Webpage
- Easily Adjustable 3-Axis Wall Mount, Junction Box Included
- Dual Encoder H.264/MJPEG
- Optional Audio
- Casino Mode™ to Maintain 30fps (AV2225 Models)
- Binning Mode for Strong Low-Light Performance on 3MP, 5MP and 10MP Resolutions
- Privacy Mask, Motion Detection, Flexible Cropping and Forensic Zooming
- True Day/Night Functionality with Mechanical IR Cut Filter



Integrated Motorized Lens with Remote Focus and Zoom



P-Iris Control for Best Depth of Field and Image Clarity



All-in-One Bullet-Style Solution



True Day/Night with IR Cut Filter



Vandal and Weather Proof IP66 Rated



Audio Input/Output (-A Models)

10MP
80

Dual Mode: 1080p/10MP on 10MP Models



Pixel Binning Mode on 3, 5, and 10MP Models



IR LEDs



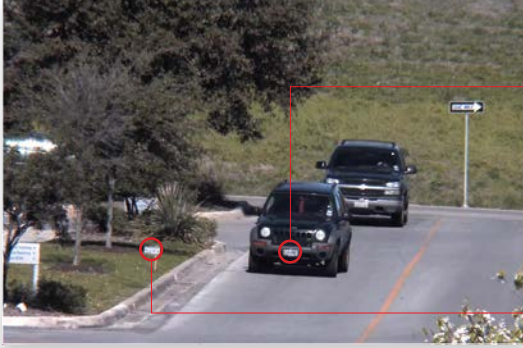
Wide Dynamic Range Available on AV2226 AV3226 Models



Dual Encoder H.264/MJPEG

Increased Resolution for Forensic Zooming

Arecont Vision MegaView 2 cameras allow you to choose the level of resolution you need. In applications where extreme detail is required, such as license plate or face recognition, a higher resolution camera can be selected to ensure sufficient pixel density is delivered. Because megapixel images have a greater number of pixels than VGA images, MegaView 2 cameras allow users to view up-close details in live or recorded video at any time without compromising overall surveillance—an added benefit not possible with conventional PTZ cameras.



The license plate marker: 90ft (27.4m) from camera
Camera: AV5125v1 @ 10mm
Pixel density archived: 50PPF (164PPM)



Remote Focus/Zoom and P-Iris

The MegaView 2 series of all-in-one H.264 cameras combines megapixel resolution with remote focus, remote zoom, Day/Night and P-iris capabilities. The cameras can be installed without locally adjusting the field of view or focus. All lens operations can be remotely controlled from the head end to refine the field of view and focus of the scene. Short or full range focus scan functions analyze the local or full scene to determine the best focus for the chosen field of view.



Megapixel image without WDR



Megapixel image with WDR

MegaDynamic® Wide Dynamic Range (WDR)

Users can achieve clear images in extreme lighting conditions with MegaView 2 WDR cameras in resolutions of 1080p and 3MP. Wide Dynamic Range up to 100dB at full resolution balances light and dark areas in the same scene, such as in the lobby of an office building or the loading dock at a distribution facility. IR illuminators provide coverage in total darkness for a 24-hour solution.

Enhanced Low-Light Performance: Capture Images Even in Total Darkness



Day Mode



Night Mode

As part of their superior Day/Night operation, MegaView 2 cameras include low-light enhancing technology such as binning and adaptive noise-cancellation. Their Day/Night capability automatically switches from color to black/white operation to increase sensitivity at night or in unlit spaces. This functionality along with integrated IR illumination provides a winning combination in complete darkness.

MegaView® 2 Megapixel IP Cameras

IR Illuminator Specifications

IR Illuminator Key Specs	
IR LEDs	48 pcs
IR Wavelength	850nm
IR Distance	25m
IR Angle	50°



Total PoE Solution

No external power is needed for IR LED ring.



Junction Box Included

MegaView 2 ships with its own junction box, simplifying both installation and the ordering process.



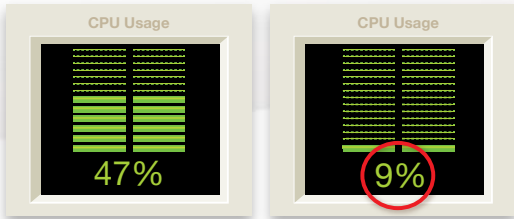
User-Friendly Web Interface

For easy installation, remote focus and remote zoom can be done through the camera webpage (MegaView 2). Just click "short range focus" or "full range focus" to get a clear image. The added P-iris functionality provides better depth of field in varying lighting conditions.

Additional Benefits Include:

- Fine tuning for a better image after installation
- Quicker installation meaning less expensive total cost of ownership
- Ability to choose wide or telephoto field of view depending on application requirements
- P-iris is designed to provide the maximum depth of field in any lighting condition to ensure the best possible image quality

H.264 Decompression (example)



2MP with live video in MJPEG

2MP with live video in H.264

Compliant H.264 Compression

MegaView 2's compliant implementation of H.264 allows full frame rates and full resolution without sacrificing image quality and offers H.264 and MJPEG dual compression support with simultaneous streaming. With bit rate control, the CPU load is decreased at both the client (decompression) side and the server/storage side, allowing lower bandwidth and storage relative to MJPEG. Real Time Streaming Protocol (RTSP) allows for compatibility with media players such as Apple QuickTime®, VLC and others.

Product Comparison



Model	Resolution		Minimum Illumination	Lens	Max Frame Rate @ Full Resolution	Day/Night	WDR	Binning Mode	Remote Focus/Zoom	IR LEDs	Audio Option	P-Iris Lens
AV1225PMIR	1.3MP	1280 x 1024	Color: 0.1 Lux B/W: 0 Lux, IR Sensitive	3-9mm, 1/2.7", F1.2, RZ, RF, P-iris, H-FOV = 77°-25°	42fps	•			•	•		•
AV2225PMIR	1080p	1920 x 1080	Color: 0.1 Lux B/W: 0 Lux, IR Sensitive	3-9mm, 1/2.7", F1.2, RZ, RF, P-iris, H-FOV = 115°-37°	31fps	•			•	•	•	•
AV2226PMIR	1080p	1920 x 1080	Color: 0.3 Lux B/W: 0 Lux, IR Sensitive	3-9mm, 1/2.7", F1.2, RZ, RF, P-iris, H-FOV = 82°-27°	30fps	•	•		•	•		•
AV3225PMR	3MP	2048 x 1536	Color (Non-Binning): 0.3 Lux Color (Binning): 0.15 Lux B/W: 0 Lux, IR Sensitive	3.6-9mm, 1/2.5", F1.3, RZ, RF, P-iris, H-FOV = 76°-28°	21fps	•		•	•	•		•
AV3226PMIR	3MP	2048 x 1536	Color (Non-Binning): 0.3 Lux Color (Binning): 0.15 Lux B/W: 0 Lux, IR Sensitive	3-9mm, 1/2.7", F1.2, RZ, RF, P-iris, H-FOV = 87°-29°	21fps	•	•	•	•	•	•	•
AV5225PMIR	5MP	2592 x 1944	Color (Non-Binning): 0.3 Lux Color (Binning): 0.15 Lux B/W: 0 Lux, IR Sensitive	3.6-9mm, 1/2.5", F1.3, RZ, RF, P-iris, H-FOV = 96°-36°	14fps	•		•	•	•	•	•
AV10225PMIR	10MP	3648 x 2752	Color (Non-Binning): 0.42 Lux Color (Binning): 0.21 Lux B/W: 0 Lux, IR Sensitive	4.7-9mm, 1/2.3", F1.5, RZ, RF, P-iris, H-FOV = 78.8°-37°	7fps	•		•	•	•		•

Options

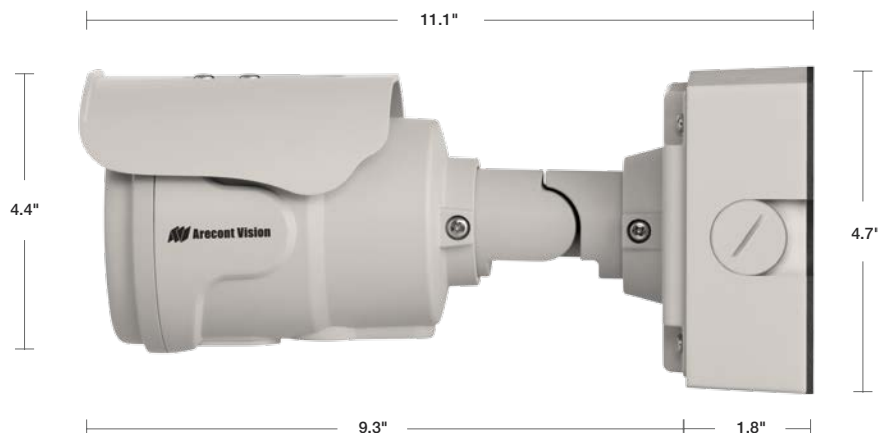
-A	Audio Input/Output
----	--------------------

(Example: AV5225PMIR-A)



MegaView® 2 Megapixel IP Cameras

Configurations



Wall Mount with Included Junction Box

Accessories

SV-EBA
Electrical Box Adapter



MD-PMA
Pole Mount Adapter



MD-CRMA
Corner Mount Adapter



Global Sales and Support

Arecont Vision is the leading manufacturer of high-performance megapixel IP cameras and associated software. All Arecont Vision cameras are made in the USA.

North America

Los Angeles, USA

Arecont Vision, LLC. Headquarters
425 E. Colorado St., 7th Floor
Glendale, CA 91205, USA

Phone: +1.818.937.0700
Toll Free: 877.CAMERA.8
Fax: +1.818.937.0464

Sales

Phone: +1.818.937.0700 x 3
Email: avsales@arecontvision.com

Support

Phone: +1.818.937.0700 x 1
Email: support@arecontvision.com

South America

Latin America

Email: latam.sales@arecontvision.com

EMEA

Frankfurt, Germany

Arecont Vision Europe GmbH
Lyoner Straße 38, 5th Floor
60528 Frankfurt, Germany

Phone: +49.69.6953.4600
Email: europe.sales@arecontvision.com

Moscow, Russia

CJSC Arecont Vision
121351, Russian Federation, Moscow, 58/1,
Molodogvardeiskaya str.

Phone: +7.495.649.0577
Fax: +7.495.221.5227
Email: info@arecontvision.ru

Middle East

Email: mena.sales@arecontvision.com

Africa

Email: africa.sales@arecontvision.com

APAC

Shanghai, China

Resident Representative Office of
Arecont Vision, LLC in Shanghai
Taolin Road No. 18, Building A
World Plaza, Room #1603
Pudong New District, Shanghai, 200135
P.R.China

Phone: +86.21.6176.2596
Alt. Phone: +86.21.6176.2597
Fax: +86.21.6085.2520
Email: apac.sales@arecontvision.com

Made in the USA

Arecont Vision

10 Years
2003 - 2013