

# WebCAST™

## *Intelligent Control Panel*

### Overview

WebCAST™ is a patent pending, revolutionary invention that is poised to take advantage of the Web technology age by changing the way a security system is implemented. The conventional way of implementing a typical security system has never been smooth because the installation of application programs used to remote control and monitor a panel in the system has always been tedious and complex. Furthermore, application programs that are designed for a specific operating system cannot run on another operating system. What is needed now is a new method of providing cross platform remote controlling and monitoring, where the system is truly easy to implement and not dependant on any operating systems to run on.

And WebCAST™ is here to address the problem!

WebCAST™ is a new generation intelligent control panel that uniquely combines the features of a Web server and security control functionality's into one complete unit.

Any computer of different operating system and hardware platform that runs a standard web browser program e.g. Internet Explorer or Netscape Navigator, can now be used to access, monitor and control any WebCAST™ panels which in turn controls the doors, alarms, devices etc.

Employing the latest Web technologies, WebCAST™ has a built-in Web server that allows any monitoring or programming of control parameters to be done on the fly through a Web browser program using standard transmission Internet protocol.

Information from each WebCAST™ panel can now be transmitted and received easily to any central computers via the Internet email protocol, which acts just like an SMTP client in your network!



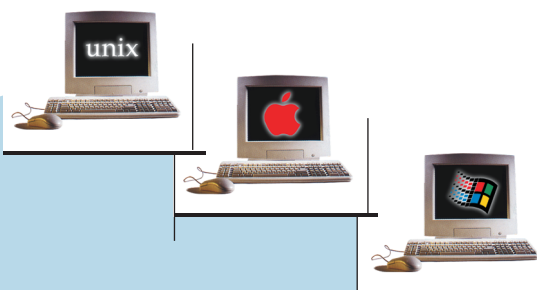
Intrusion Alarm Monitoring



Time Attendance

Access Control

Web Browser Interface



## Benefits

### Cross-Operating Platform or System Interoperability

Whether it is a PC, Mac or Unix machine, WebCAST™ gives you complete flexibility of operating on these platforms without any extra effort in setting up.

### Easy to Install

WebCAST™ adopts the 'Plug n Play' concept. Simply connect a network cable from WebCAST™ to a computer or network hub, follow by running a Web browser program on your client computer to set up WebCAST™ and your security system will be up and running in no time.

### Easy to Access

WebCAST™ can be accessed from any computers (or clients) that exists in your network, be it in a LAN, WAN, Intranet or Internet configuration! No longer are users required to have a dedicated computer to handle the panel as any computers can now be used to access WebCAST™. Such powerful features allow users to save costs by fully optimizing their existing resources and cutting down on any unnecessary spending of new hardware.

### Easy to Operate

Through the intuitive Web interface, users will find it easy to operate since controlling and monitoring of WebCAST™ is like surfing the Internet! This also implies that minimum training is needed for distributors, installers and end users.

### Easy to Maintain or Upgrade

As WebCAST™ is not dependent on any operating platform or system to run on, upgrading the WebCAST™ does not require users to upgrade their computer and operating systems. Likewise, upgrading the operating system e.g. from Win 95 to Win 98/NT/2000 will not affect the WebCAST™ system configuration. Such investment produces long term cost saving for the users.

### Time and Cost Savings

During installation, testing and commissioning, WebCAST™ systems do not require application programs to be installed on central computer(s). This implies time and cost savings for end users, distributors and installers.

### Global Implementation

WebCAST™ can be implemented globally to support different foreign languages since the web interface is designed using standard HTML format that can be coded easily into different foreign languages.

## Product Highlights

### Network Ready

WebCAST™ is a 'network-ready' control panel that connects easily to any TCP/IP network via a Ethernet port or hub. Any client computer in the network can then access WebCAST™ to manage the database, monitor activity or control devices. For a single computer configuration, WebCAST™ is connected to the computer via a standard Ethernet LAN cable.

### Web Control Interface

WebCAST™ has a built-in Web server that allows monitoring and programming of control parameters to be done on the fly through any standard Web browser program, e.g. the Internet Explorer or the Netscape Navigator. Different computers running different operating systems can access and operate WebCAST™ seamlessly as long as they have a standard Web browser program.

### Built-in Integrated Security Functions

WebCAST™ utilizes a 32-bits microprocessor that has built-in integrated applications for door access control, alarm monitoring, vehicle boom gate control, time attendance, guard tour, video surveillance interface and a host of other up-to-date security features. With the comprehensive range of built-in integrated security functions available on your WebCAST™ control panel, you will no longer need to install another proprietary application program on your computer.

### Easy Language Conversion

Using standard HTML format, the WebCAST™ interface can be customized into different languages easily. End users can now program and view their control parameters and data in their own native language or any other language desired.



### Internet Email (SMTP) & Short Message Service (SMS) Support

WebCAST™ can send out emails based on triggered events, transactions under normal or alarm conditions. It can also send out heartbeat signals separately for hardware and software status. Each mail message consists full description of the event or alarm, location, ID and time/date stamp.

Emails can be sent to multiple recipients or are relayed as SMS to mobile phone users via standard Internet gateways worldwide. The prowess of this function provides an unlimited means of selectable information transfer to recipients.

## Key Features

### Multiple Entry Access Mode

There are 3 different entry access modes that you can set to cater to your security requirement, viz: 'Card only', 'PIN only' and 'Card & PIN'.

### User-Definable Personal Identification Number (PINs)

Each cardholder is given the flexibility to choose his or her own 4- to 7-digit PIN code.

### Multi-Functional Card Assignment

The versatility of WebCAST™ is seen clearly in its ability to assign a single card to perform multiple functions. A card can be programmed to work as a normal access card, time clocking card or a alarm arm/disarm card.

### Time Schedules

Up to 256 sets of timer schedules can be defined to provide access-control behavior like unlocking of doors, access control activation, PIN function activation or auto arming for an alarm point. Four time-slots are available for each day of the week for the programming of each timer setting.

### Intrusion Alarm Monitoring

WebCAST™ provides 2-state alarm monitoring on all inputs. A card reader can be programmed as an arm/disarm reader for arming/disarming of multiple alarm zone.

### Relay Outputs

A maximum of 64 Form-C PCB mounted relays can be software-configured for door strike controls, sirens, alarm shunting, vehicle boom gate controls and a host of other applications.

### Global Input-Output Linking

Any output relay can be linked to any input to provide facility control and automation easily through the dynamic global input-output linking feature.

### Log-on Access Rights

Access into the system control parameters and transaction records are ID and password-protected.

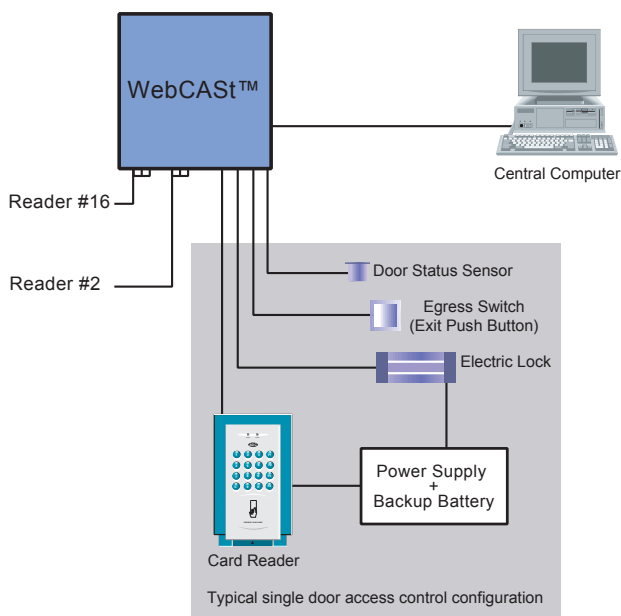
### Dual Port Memories Data Backup

All transaction records, cardholders' data as well as system control parameters are stored in the RAM onboard with a back-up copy in the secondary flash memories. All data are saved automatically based on time set-up. All data will remain intact even if the system experience a power failure!

### Easy Firmware Upgrade

WebCAST™ utilizes the latest state-of art flash memory technology to store the firmware for the system. As such, firmware upgrades can be updated without changing the hardware. Firmware updates can be downloaded from the Internet.

## System Configurations



Typical system diagram - WebCAST™ connected to a single central computer

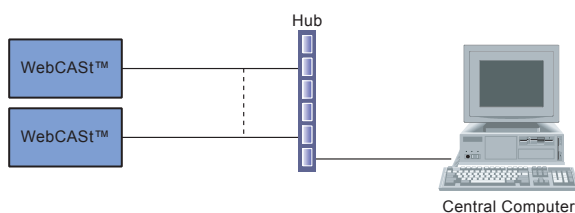


Diagram showing multiple WebCAST™ panels connected to a single central computer

## Features Summary

### System Parameters

- 254 access groups
- 256 weekly schedules
- 32 holidays & 32 special holidays
- Full anti-passback (APB) capabilities
- Global APB for 16 wiegand compatible readers
- Max. 32 input monitoring points
- Max. 32 relay outputs
- 5,000 buffered transaction history
- Built-in Reporting functions (transactions & system logs)

### Card Access Parameters

- 1,024 card capacity
- 16 programmable wiegand card formats
- Card function type: normal, time attendance, arm/disarm
- Card only, or PIN only or card + PIN operation
- Selectable PIN per card (4-7 digits)
- Card batch add/delete feature
- Card + PIN to arm/disarm alarm function
- Dual-card access function
- 2 user definable fields

### Door Parameters

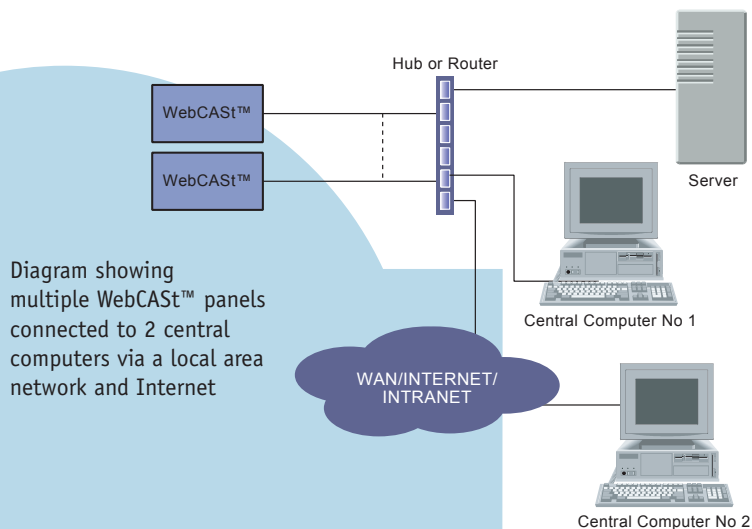
- Auto lock/unlock (schedule controlled)
- Lock/unlock of doors by card reader control
- Door strike control, 1-255 secs.
- Door left open alarm, 1-255 secs.

### Alarm and I/O Status Parameters

- Automatic incoming power failure monitoring
- Real-time alarm transaction monitoring
- Instant & delay alarm monitoring for any input
- Programmable alarm point description
- Programmable arm/disarm of alarm zone(s)
- Programmable arm/disarm status LEDs
- Programmable output control
- Programmable input-output linking
- Door held open/forced open alarm reporting
- Duress alarm (from keyboard readers)
- Tamper alarm (enclosure opening)
- Common Alarm Output

### Email Parameters

- Based on SMTP
- Email upon triggered conditions (based on selectable events, devices and/or cardholders)
- Time attendance transactions and lateness reporting
- 8 programmable groups of email recipients with attached messages



## Hardware Specifications

### General

Power supply	Input supply	115/230VAC or 50/60Hz
	Battery input	12V 7AH
	Battery charging	On-line charging
Card readers	16 wiegand compatible card readers	
Input channels	Maximum of 64	2-state monitoring channels
Outputs	Maximum of 64	Form-C PCB mounted output control relays

### CPU Board

CPU type	32 bit microprocessor	
Type of memories	16MB FP RAM and 3 MB Flash	
Indicators	LEDs used for status and diagnostics	
Ports	Bus expansion ports	2 bus ports-using 2 IDE connectors
	Communication ports	1 ethernet port and 1 RS 232 port

### Expansion Board

CRC Type	CRC Type3	8 I/O
Input supply	15VDC	15VDC
No of wiegand readers supported	4	-
No of input monitoring channels	8	8
No of output control relays	8	8

### Operating Environment

Operating temperature	32-120 deg F (0 to 50 deg C)
Humidity	0-95%, non-condensing

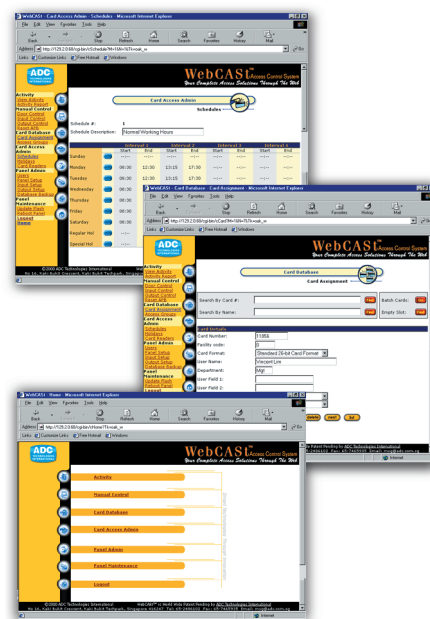
## Software Specifications

Recommended web browsers	Microsoft Internet Explorer, version 4.0 & above Netscape Communicator, version 4.0 & above
Concurrent users	2
Software protection	Can define up to 25 unique users Up to 30 alphanumeric characters for User IDs and passwords
	User IDs and passwords are case sensitive

\* For ordering information, please visit our website.

<http://www.adc.com.sg>

## WebCAST™ Web Pages



### International Safety Standards & Approvals

Readers and Controllers are designed to meet FCC Part 15  
UL 294 & CE. Power Supplies meet UL 1959 and IEC950.

### ADC Technologies International Group of Companies

#### Singapore Office:

ADC Technologies International Pte Ltd  
No 16, Kaki Bukit Crescent,  
Kaki Bukit Techpark 1, Singapore 416247  
Tel: (65)743 8088/248 6102  
Fax: (65)746 5935  
Email: msg@adc.com.sg  
<http://www.adc.com.sg>

#### China Office:

ADC 科技国际有限公司  
28th Floor Unit G,  
World Plaza, No.855,  
Pudong Nan Road,  
Shanghai 200120,  
Tel : (86)(21)5876 4446  
Fax: (86)(21)5836 9876  
Email: adcadc@online.sh.cn

#### Malaysia Office:

ADC Technologies Sdn Bhd (305457-U)  
No 9, Jalan PBS 14/5,  
Taman Perindustrian Bukit Serdang,  
Section 14, 43300 Seri Kembangan,  
Selangor Darul Ehsan, Malaysia.  
Tel: (603)8945 8088 Fax: (603)8945 9088  
Email: adctech@tm.net.my



Distributor/Dealer:

