

# Armlock® 261 & 262

## Direct-Pull Magnets



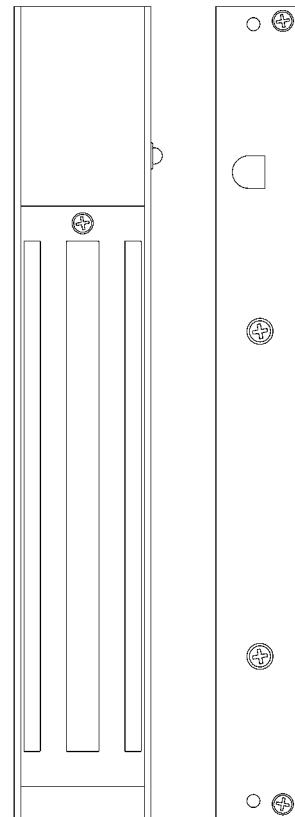
### Function

To facilitate remote access and exit control of any aluminium, timber or steel door. The Armlock® 260 Series combines a compact case size and clean aesthetics whilst maintaining a magnetic holding force of at least 250kg (550lbs). Offering durability and low maintenance, Armlock® 260 Series Magnetic Locks at all times provide positive fail-safe operation (unless power supply continued during power failure by means of battery back-up). Available for outward and inward opening door applications.

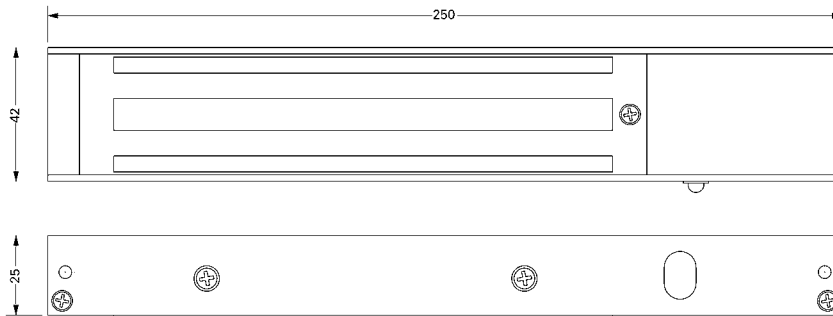
**Note:** For maximum security specify an MS® Deadlock in conjunction with the direct-pull magnet.

### Specifications

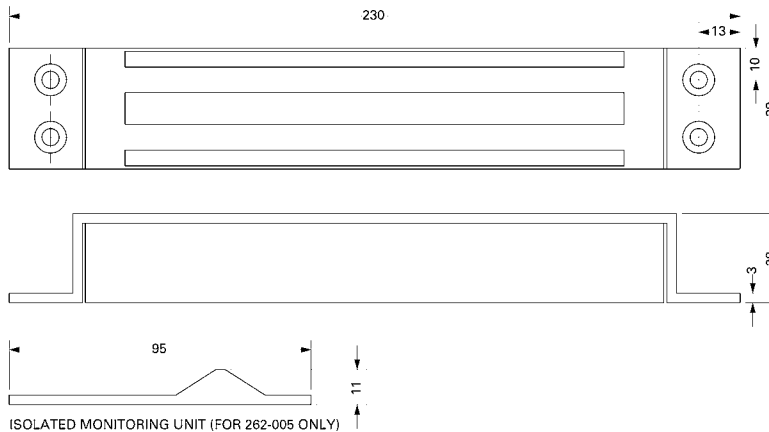
Single Magnet:	25mm x 250mm x 42mm (261 models). 28mm x 230mm x 38mm (262 model).
Double Magnet:	25mm x 500mm x 42mm (261 models only).
Armature:	11.3mm x 160mm x 36mm (2 no. for double magnet).
Nominal Holding Force:	250kg (550lbs).
Supply Voltage:	12 or 24vDC (±15%). Dual coil.
Nominal Current:	480mA @ 12vDC, 240mA @ 24vDC. Built-in voltage spike suppressor.
Monitoring:	Relay dry contact with LED. Integral on 261 models, compact isolated unit on 262-005.
Door Gap:	Maximum 3mm (1/8").
261 Positioning:	Outward opening - surface mounted to door frame header. Inward opening - door frame header using 'L' & 'Z' brackets.
262 Positioning:	Mortice mounted for single action swinging or sliding door applications (not to be used as a shearlock).
Magnet Housing:	Brushed satin aluminium.
Note:	To achieve immediate release, it is important that the release switch breaks the circuit on the positive supply to the magnet.



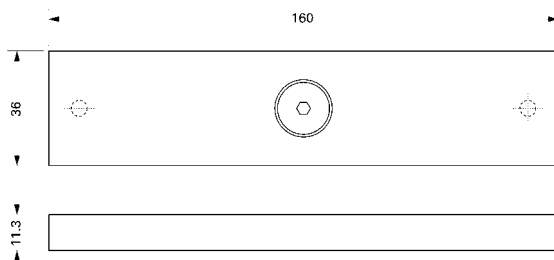
## Dimensions



Armlock® 261-005



Armlock® 262-005



Armature for Armlock 260® Series Magnets

## Ordering Codes

- 261-000** Surface mounted single direct-pull magnet, 12/24vDC, non-monitored, suitable for timber or metal door applications.  
**261-200** Surface mounted double direct-pull magnet, 12/24vDC, non-monitored, suitable for timber or metal door applications.  
**261-005** Surface mounted single direct-pull magnet, 12/24vDC, monitored, suitable for timber or metal door applications.  
**261-205** Surface mounted double direct-pull magnet, 12/24vDC, monitored, suitable for timber or metal door applications.  
**262-005** Mortise mounted single direct-pull magnet, 12/24vDC, monitored, complete with armature fixings for timber and metal doors.  
**268-600** Armlock® 260/280 Series glass armature bracket.

### Parts

- 261-300** Spare armature plate only for 260 series.  
**261-015** Surface mounted magnets & armature fixings only for 260 series.

## Related Hardware

'L' and 'Z' Brackets (p26, 28) ~ Armature Housing (p30) ~ 4591M & 999M Monitored Paddle Handle & Exit Device  
 Switching Accessories (p48) ~ RiteKey Keypad (p54) ~ Push-to-Exit Button (p56) ~ Power Supply Unit (p58)