

ACTpro 101 & 102 PCB format Door Stations

ACTpro 101 & 102 Description

ACT have launched two PCB format door stations for one and two doors. The ACTpro 101 (one door) and ACTpro 102 (two door) fit neatly into the ACTpro 200 metal casing or other suitable PSU's.

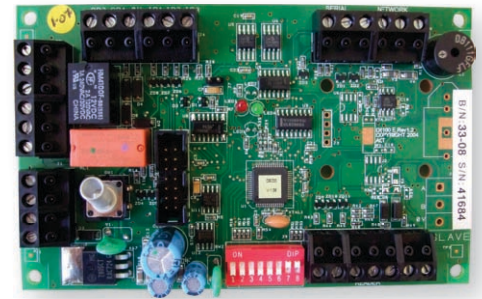
Designed with the installer in mind the ACTpro 101 and 102 door stations make installation a quicker and easier process. They are an ideal option when the available space is limited.

ACTpro 101 & 102 Features

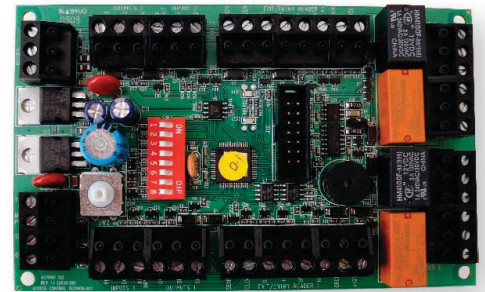
- PCB format door station for one (ACTpro 101) or two (ACTpro 102) doors
- facilitates the expansion of the ACTpro 2000 / 3000 from two to a maximum of sixteen doors
- up to 14 door stations to each ACTpro 2000 or ACTpro 3000
- programmable inputs and outputs per door
- auxiliary relay output per door
- requires 12 Volt DC supply

Ordering Codes

PCB format, single door station	ACTpro 101
PCB format, two door station	ACTpro 102



ACTpro 101 Door Station (one door)



ACTpro 102 Door Station (two door)

Product Specification

	ACTpro 101	ACTpro 102
Operating Voltage	12 V DC	12 V DC
Consumption	40 / 120 mA	40 / 120 mA
Weight	80 grams	124 grams
Operating Temperature	-10 to +50C	-10 to +50C
Dimensions (H x W x D, mm)	80x130x25	80x130x25
Mounting	Inside PSU	Inside PSU
Installation	Indoor	Indoor

Product Schematic (ACTpro 3000 two door controller with ACTpro Door Stations)

